

parish magazine

St Chad's



DEC13

Bishop's Tachbrook

Neighbourhood
Plan
Make Your
Opinion Count
See centre pages



Advent and Christmas at St. Chad's

1st Dec	4pm	Christingle – everyone welcome to this Service of Light
14th Dec	7:30pm	Concert with Nicky and Will Pound – A great evening is promised
15th Dec	6pm	Carols on the Green followed by mulled wine and mince pies
19th Dec	2pm	KS2 Carol Service Bishop's Tachbrook C of E Primary School
	7pm	A time of Quiet Reflection – leave the stress of Christmas behind
22nd Dec	6pm	Carols by Candlelight – readings and Carols
24th Dec	4pm	Crib service with Nativity – bring your children in costume and they can join in
	11:30pm	Midnight Mass – <i>the first celebration of our Saviour's birth</i>
25th Dec	10am	Family Communion and celebration of Christmas – <i>don't forget to bring your presents!!</i>

The Festive Season at Mallory Court Hotel

December Dining

For a relaxed festive dining experience in informal surroundings, the award-winning art-deco inspired Brasserie at Mallory is one of the most exciting dining destinations in Warwickshire.

Two Course Lunch – £19.95 per person

Three Course Lunch – £24.95 per person

Two Course Dinner – £25.95 per person

Three Course Dinner – £29.95 per person



20% OFF

Enjoy lunch or dinner in The Brasserie and receive 20% off your total bill when dining from the A la Carte menu!

Voucher must be supplied to claim offer. Offer valid until 28/2/14 (excluding December). Only one voucher per visit. Max 6 diners. All offers at the manager's discretion. Terms & conditions apply. No copies accepted. Excludes selected dates and bank holidays.

REF BishTachMag

Name.....

Email.....

Harbury Lane, Leamington Spa, CV33 9QB
www.mallory.co.uk 01926 330 214 2 AA Rosettes

Online gift vouchers now available!

I recently rewatched the Superman films in readiness for the new movie being released and I was struck by something Lois said in *Superman Returns*.

Superman asks Lois Lane why she had written an article against him. She replies, "I moved on. So did the rest of us...The world doesn't need a saviour. And neither do I."

He responds "Listen..."

She says, "I don't hear anything."

His moving reply is: "I do. I hear everything. You wrote that the world doesn't need a saviour, but every day I hear people crying for one."

Does God hear that cry? I believe He does - every time. I know for someone who has been recently bereaved, or maybe is watching the tragedy in the Philippines unfold in front of their eyes, God can seem distant and uncaring but I don't believe that. God cared so much that he took on human form, became a vulnerable baby, born to a refugee family with little or no money and definitely no power. God didn't seek to impress us with power, but chose to win us with his vulnerability. A vulnerability which carried on throughout his human life and exposed him to ridicule, danger and death. That is what we celebrate at Christmas – the coming of our Saviour into the world.

Over the past few weeks I have been having conversations with Jim and my sons, trying to find out what gift they would like for Christmas. I know it's lovely to have a surprise but it's also nice to buy someone something they really want or need. It's great when someone

knows you so well that they give you something that is perfect, just right for you. I remember one Christmas receiving the most beautiful dolls house. It wasn't that it cost a great deal but that my Dad had made it and my mum had helped decorate it. Another year I was given a Cindy doll. My parents couldn't afford to buy all the accessories so my mum made a whole wardrobe of clothes. It's wonderful to look back on such gifts and remember the moment, but most of all remember the love and care with which the gifts were given.

That's really what we are doing at Christmas. Christmas isn't really about the gifts that we give or receive. It's about us remembering that one, perfect gift, just right for us, that God gave us when he gave us a Saviour, Jesus. This was a gift that would change us forever, a gift that was given thoughtfully, caringly and lovingly. A gift given by someone who knew us so well that he knew just what we needed, even if we hadn't thought about it ourselves.

I hope you have a wonderful Christmas. I hope you manage to find that perfect gift for those you love. I hope you receive something so special that you will remember it in years to come. But, most of all, I hope you remember, appreciate and give thanks again for Jesus, the wonderful gift that God gave to each of us, and come and give thanks for that gift at one of our services in St Chad's.

With every good wish for Christmas and of course, for a truly blessed 2014.

Rob Loveday Electrical Services

**NICEIC Part P Approved
Electrician
and
City & Guilds Qualified PAT tester**

**The local electrician you
can rely on - no job too small**

**Call Rob for a fast, friendly
and efficient service**

Mobile : 07825 345009

Office : 01926 429082

Email:- robertloveday@sky.com



Graham Lewis Carpets

BISHOP'S TACHBROOK

**Carpet supply,
fitting and
cleaning**

01926 882986

07759 773688

KITCHENS & BATHROOMS

'Your local family business est since 1985'

**From a simple refurbishment to
complete install**

**Replacement doors, drawers &
worktops made to any size**

Full design service offered

Project managed or supply only

Large local showroom

Our own employed team of fitters

Quality customer service

DIAMOND INTERIORS

01926 332288

27 Hurlbutt Rd, Heathcote Ind Estate

Leamington Spa, CV34 6TD

www.diamondinteriors.net

Joys & Sorrows

Do you have any major life events to share? We'd love to hear of births, engagements, anniversaries and significant birthdays. Call Julie on 01926 420826 or email Julie_m_thomas@hotmail.com

Graham Leeke Honoured

Lord-Lieutenant of Warwickshire Mr Timothy Cox made a special presentation of a British Empire Medal to Graham Leeke to honour his outstanding service to the community of Bishop's Tachbrook and Warwickshire. The ceremony and reception was held at the Judge's House in Warwick on Tuesday 29th October, hosted by Councillor David Shilton, Chairman of the Warwickshire County Council and attended by representatives of the Parish Council, family and friends.

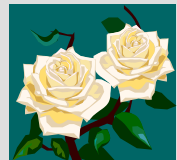
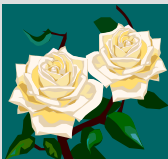


Mr Cox made special mention of Graham's energetic and persistent efforts to create a better and stronger community life for all in Bishop's Tachbrook through his skilful engagement of a wide range of people across the County. Graham was particularly commended for the example he has set of selfless community service. In response, Graham graciously acknowledged that this award was fitting recognition of the many people across Bishop's Tachbrook who have worked so hard over the past decade to make the Parish such a great place to live. "Together we've been able to do so much more than any of us would have believed possible to serve all those who live in the Parish."

The Christian Family

Baptism

Evan Jonathan Davy
*We welcome him into the
Christian Family.*



Marriage

Richard Pearce & Rachel Mills
We offer our congratulations and best wishes for the future.

Bishop's Tachbrook Sports and Social Club

Fri 6th Dec	POKER NIGHT - come and have fun and win some money
Sat 7th Dec	An exciting new band TIGER TIGER
Sat 14th Dec	We have the old favourite BOTTLE BINGO
Sat 21st Dec	QUIZ NIGHT with The Judge
XMAS EVE	Grand Xmas Draw followed by THE JAYKAY BAND
NEW YEARS EVE	Come and have a great New Year with PHIL KING AND THE ROYALS. All the family are welcome. There will be a taxi service available, please book in advance with Karen.
Sat 4th Jan	Senior Citizens Party with entertainment by CHRIS IGOE
Sat 11th Jan	QUIZ NIGHT with The Judge
Sat 18th Jan	SKITTLE NIGHT
Sat 25th Jan	Cheap beer and a new band THE BRAKES

Entertainment starts at 8.30pm. Bingo every Sunday and Tuesday at 8pm

**REMEMBER ALL CHILDREN WELCOME, COME AND HAVE A
GOOD NIGHT OUT TELEPHONE 01926 421621 OR
E-MAIL enquiries@bishopstachbrookclub.co.uk**

**FUNCTION ROOM FOR HIRE £40 to members/£50 to non-members
PHONE KAREN CAPEHORN 07855709051 FOR DETAILS.**



Holistic Treatments by Kerry

Acre Close, Whitnash. Leamington Spa.
01926 427352 / 07890 444870

Aromatherapy from £24.00

Body Massage from £20.00

Hopi ear candles £17.00 (Children), £22.00 (Adults)

Indian Head Massage £27.00

Get Fresh Spa treatments from £25.00

Reflexology £15.00 (Children), £27.00 (Adults)

Gift Vouchers available

Free parking



Call for our latest offers and further information on any of the above treatments

Merry Christmas and Happy New Year ...

...to all those who contribute to the magazine. Thank you for taking the time to put your items together each month and for keeping everyone informed and entertained! It's thanks to you and your efforts that the magazine is such a valued part of our community.

...to the fantastic team of distributors. Thank you for working so quickly and efficiently every month to ensure the magazine is delivered to all homes on time. And special thanks to Kate Wellsted for taking on the job of co-ordination of the magazine distribution.

... to all those who advertise in the magazine. Thanks all of you for your support of the magazine and we hope your businesses prosper in 2014.

...and to everyone who reads the magazine. We hope you continue to enjoy the magazine in 2014. Please get in touch if you have any new ideas for features or would like to get involved.

With very best wishes to you all at Christmas.

Parish Magazine Committee

Special Christmas wishes and a big thank you to everyone who has contributed to the magazine fund-raising so far. Your support is greatly appreciated.

If you haven't already done so, it's not too late to drop your magazine fundraising envelope off at any of the following addresses:

The Vicarage, 15 Argyle Way, 11 Vicarage Rise, 3 Hassell Close, 15a Savage's Close, 1 Launce Grove Warwick Gates, 5 Birch Court Heathcote Park or the bucket at St Chad's Church.

Parish Magazine Advertising Costs for 2014

Black & White full inside page

10 months: £195

1 month: £25

Black & White half inside page

10 months: £115

1 month: £20

Black & White quarter inside page

10 months: £80

1 month: £15

Colour full inside page

10 months: £500

1 month: £60

Colour half inside page

10 months: £300

1 month £40

Sureway Heating Services

Your **central heating** and **gas boiler** is a vital part of your home. You rely on it all year round to keep you warm and heat your water. We understand this and we have **over twenty seven years experience** in keeping this important part of your everyday life running smoothly, safely and efficiently. Our plumbing techniques are specialised to cater for heating repairs, general plumbing and specialised bathrooms.

- **Boilers & Central Heating Services**
- **Repairs and Installations**
- **Landlords Gas Safety Certificates**
- **Service & Repairs of Gas Fires**
- **Bathrooms & Wet Rooms**
- **Warm Air Heating & LPG**

01926 426 715 or 01926 337 157
1 MORRELL STREET, LEAMINGTON SPA,
WARWICKSHIRE, CV32 5SZ



www.surewayheating.co.uk

Drop Dead Gorgeous Curtains

Beautiful Bespoke Curtains, Cushions and Roman Blinds.
All made to measure and sewn by hand.

I can supply a range of fabrics and poles or I'm happy to work with yours.

Free measuring and free fitting.

I also take on curtain alterations big or small.

Please call Sharron for friendly and helpful advice or to arrange a free quote on: 01926 612226 or 07760395805

Email: dropdeadjorgeouscurtains@gmail.com

Or visit my website www.dropdeadjorgeouscurtains.co.uk

I also offer sewing classes covering a range of topics and techniques or can tailor one to your needs, please visit my website for details and call me to book a place or make an enquiry.



Our November meeting again caused a few problems. We found out on the Tuesday that the speaker, Jan, had been sent on a training course. As you can imagine panic struck but, calm and collected as always, Doreen found us a speaker who was happy to come at very short notice.

Ruth Smith has a talk entitled **Oliver Twist, Past and Present.** A Dickens fan you are thinking, but Ruth is an accredited speaker on behalf of The Children's Society. She related present day life to that of times gone by. In 1881 Edward Rudolph, a Sunday school teacher from Wimbledon, when children didn't turn up went looking for them and found one family had 7 children under 11, the father dead, and had been turned out of their home. He met with the archbishop and they decided that the church must do something. This meeting resulted in the setting up of family sized homes of about 15 children and within 30 years 120 homes had opened throughout the country. The 7th was in Leamington Spa, St Anne's for Girls was near the Falstaff Hotel. It closed in 1980.

Today the Society helps 48,000 children in various ways. They have, with the help of West Yorkshire police, set up safe houses where they are allowed to keep children for up to 3 days but there are only 7 of these at present in the whole of England. The Society has also started a campaign for all children under 7 to get free school meals. Ruth was an excellent speaker and everyone was enthralled.

We then discussed various outings. The Group carols is on Dec 3rd, we are off to Charlecote to make door hangers again on the 12th and we are going to the Loft on 9th, so together with the Christmas party December is proving to be rather busy. Oh and I forgot the Flower Festival in the Great Hall of the Lord Leycester Hospital on 7th December. This is open to all, it is entitled A Celebration of Inspirational Women and is part of Warwickshire Federations 95th Anniversary Celebrations.

In January we are having a meal at the Leopard in lieu of our meeting but start again proper in February with Karen Fisher from the Woodland Trust who is to tell us about the Ancient Tree Hunt. In March James Kerr will talk on Shakespeare's Scenery. We also have the start of the Serious Science Lectures. These include one on the Future and another on Sleep and Health. There is also to be a trip to investigate Legal London and a workshop on how to make a box casket.

Why not make us part of your New Year Resolution to do something different - come along to one of our meetings and discover for yourself how much fun we can be.

Please don't forget I'm collecting your used postage stamps for Marie Curie Cancer Care so when opening Christmas cards put the stamps to one side and let me have them.

**Have a lovely Christmas, from everyone
at Bishop's Tachbrook WI.**

Anne Allen 424135

Having recently had a baby (well, nine months ago – doesn't time fly!) I was keen to get out and about and meet new mums in the local area. I first came across Tachbrook Tinies when attending the health visitor clinic at the Sports and Social Club. There looked to be lots of children who were all having a lovely time, although for someone with a newborn it seemed overwhelming at first. Talking to Lisa and Grace put my mind at rest and I could see it was a welcoming environment for all ages.



Lisa has now handed the reins over to Grace in order to concentrate on full time childminding. Grace and Peggy now run the group which is held every Thursday during term time 9.30am till 11am.

Grace is a mum of three who lives in Bishop's Tachbrook. She looks after her niece while her sister works and is hoping to set herself up as a registered childminder in the next year or so. Peggy has two children who go to school in Harbury and she comes along to help in the kitchen preparing snacks. Peggy also works in the nursery in the village.

As I mentioned earlier, I first encountered Tachbrook Tinies at the health visitor clinic held once a month at the Sports and Social Club. Unfortunately, after the summer holidays, outreach health visiting clinics at Bishop's Tachbrook and Warwick Gates are no longer being held. This has a number of knock on effects for parents in the village.



Firstly, for those who don't drive, attending a health visiting clinic (which as new parents we are reminded is important) becomes more difficult. The nearest one is now at Kingsway Children's Centre on a Wednesday morning. This involves quite a walk down Tachbrook Road or struggling with a new baby onto a bus.

Secondly, Tachbrook Tinies is feeling the impact as the health visitor clinic paid for the space the week it was being held. This helped subsidise

Tachbrook Tinies for the other weeks. The S&SC already offers very reasonable rates but at the moment Tachbrook Tinies is just scraping though money wise. If more people attended the group it would really make a difference to the sustainability of such a vital village group.

The benefits of having a group in the village are for people such as Grace who don't drive to have somewhere to take the children to play and for the parents to meet new people and make new friends. As a new mum I can't emphasise enough how important not feeling isolated in a village is. It is so nice being in touch with other mums who have similar aged children who will hopefully be attending the village school together.

To keep Tachbrook Tinies running, Grace and Peggy really need a couple more people to help set up and put away. This shouldn't take up too much time, especially if a few people offered. And if you do bring a child with you, the child would be able to attend for free as a thank you for volunteering.

So if you have one or more children of pre-school age then please do think about popping along to Tachbrook Tinies at the S&SC on Thursdays between 9.30am and 11am during term time. It's £1.50 per adult and 50p per child. This includes snacks and drinks and of course access to the fabulous toys and running around space Tachbrook Tinies provides.



1st Bishop's Tachbrook Rainbows

Is your daughter aged 5, does she like having fun, playing games, making things and being part of a group?

Then Rainbows could be for you.

Rainbows are part of the Girl Guiding group.

If your daughter is interested

email Jade at [jadechoc@aol.com](mailto:atjadechoc@aol.com)





Driving School

£22 per hour lesson

www.csldrivingschool.co.uk

Tel: 01926 831713

mob: 07594810822

e: p.hancock_adi@hotmail.co.uk

Local independent driving school run

by Peter Hancock

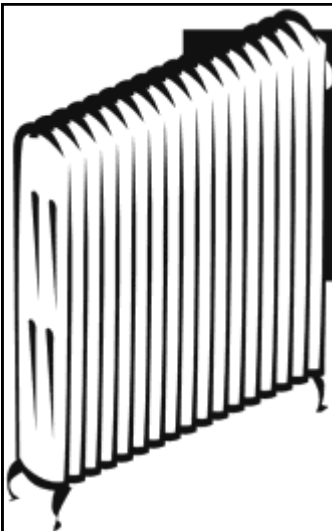


find us on Facebook

**VISITING
QUALIFIED
CHIROPODIST**

**Mrs Lynn Hemmings
MSSCH, MBCHA**

01564 784466



**ANDY VEALL
PLUMBING & HEATING**



213264

TEL: 01926 315387

**Gas Fitting • Central Heating
Plumbing • Bathrooms • Showers
Landlord's Gas Safety
Installation • Servicing • Repairs • Power Flushing**

As a child I had to spend more time in

Church than a young boy wanted to. One legacy of this, is an internal store of lyrics and tunes plundered from 'Hymns Ancient & Modern'. One favourite for the Christmas period is, 'In the bleak midwinter'. Christina Rossetti's words are, to me, elegantly lovely. Gustav Holst's musical setting of the words has always been a joy to sing. So apologies to both for having the temerity to rewrite such a thing of beauty trying to give it a winter gardening feel.

*In the bleak mid-winter, organic gardener
did intone,*

Parsnips were true and tender, King

Edwards had stored well,

The Christmas plate was laden,

veg on veg, veg on veg,

In the bleak mid-winter, long ago.

*Our soil is abundant, good earth will
sustain, Pesticides shall flee away, when
organics come to reign,*

*In the bleak mid-winter, our chutney does
suffice,*

Our organic gardens, nature is so nice.

*Enough for us, whose compost bins,
develop night and day,*

*A handful of tiger worms and nettle leaf
mixed in,*

*Enough for him whom autumn leaves, fall
down before,*

The enthusiastic composter, does adore.

*Onions and leeks, they are staples here, Rasp-
berries and Damsons, soaked in gin,*

*But only a gardener, in organic bliss,
Trusts in nature, to deliver all these gifts.*

*What can I provide you, organic as you are?
If I were a cooking man, I would bring some
herbs,*

*If I were a wise man, I would do my part,
Yet what I can I give you, an organic heart.*

Website of the month –

The Organic Gardening Catalogue

The strapline for this site is, 'Only good things for your garden'. Whether you're looking for a 'stocking filler' or a larger gift, modern or traditional, there's a wide range of goods available. Go to: <http://www.organiccatalogue.com>

What to do this month

Plant Fruit trees and bushes.

Grow Check plants under cloches and in greenhouses for pest damage and rot. Inspect stored vegetables and fruit and remove anything rotten. Start pruning apple and pear trees. Clear late-season debris from vegetable plots.

Eat Annual spinach, Brussels sprout, cabbage (winter/savoy), cauliflower, Jerusalem artichoke, leaf beet, leek, lettuce, parsnip, salsify, swede, turnip.

Christmas recycling tips

Unfortunately, wrapping paper is **not** accepted in your kerbside collection bin for recycling. Why not try using string to secure your wrapping paper then your friends and family can reuse the wrapping paper again next year! Alternatively you could use a gift bag, which can be reused!

Drop off points for wrapping paper are:

Leamington Library, Lillington Library
Whitnash Library, Warwick District Council
Offices, Leamington Town Hall

Only Christmas Cards can be put in your red recycling box. Place your real tree by your green bin.

If you don't grow your own already and would like advice / support from a Master Gardener then please contact Susan Watt or I on: suzwatt@gmail.com or 07711 498047
keithwellsted@btconnect.com or 0771 8196577

**Happy Christmas and a wonderful
New Year in the veg patch.**

No job
too small

Free
Quotations

Phil's Plumbing and Heating

Fully Qualified
and
Insured Plumber

Bathrooms, Central Heating & showers

I am a locally based plumber
offering very competitive rates
on any plumbing or heating job.

No job too small,
Please give Phil a call

Call Phil

Daytime: 07971 046392

Evening: 01926 400746

Email: philmunday@hotmail.co.uk

**Bishops Tachbrook
Leamington spa**

PUNCH AND JUDY

It was a chilly autumn afternoon when we went to the October meeting in St Chad's Church, but for most of us our thoughts turned to sunny holidays of our childhood, building sand castles on the beach then running excitedly to see the Punch and Judy show. We never

gave a thought to how and when this form of

entertainment developed but 'Professor', with his colourful display of pictures, transported us to Italy of the 17th century, where

string puppets (marionettes) replaced expensive stage productions with live actors. England under the Commonwealth had suffered the suppression of theatres, dancing, sport and having fun, so the mood was ripe for this new form of puppet entertainment, which mocked politicians and the establishment of the day, along the lines of TV's Spitting Image of the 1980s. The earliest written record of a performance in London's Covent Garden was in 1662 in the diary of Samuel Pepys.

Performances spread to street corners of cities and villages, and eventually to the seaside. A performer and his helper, the 'bottler' (who banged the drum, played the panpipes and collected donations in a bottle) lived comfortably on the takings from this popular show. The tradition

continues today and a modern version includes Nick Clegg as the clown and Boris Johnson as the policeman.

After the talk we were treated to a show with the traditional assault on Judy, the baby and the policeman – not very hilarious when we are aware of the reality of these situations in our society.

But we ended with a laugh. The strange

voice of Punch is achieved by the use of a swazzle – a small device made of two strips of metal bound around a cotton tape reed. When

pushed to the roof of the mouth it produces that unintelligible sound; the dexterous movement of the tongue swiftly moves the swazzle to the cheek so a normal voice is heard. A BBC reporter who was interviewing a 'professor' was given his swazzle to try. After a not very successful attempt he asked "Do you ever swallow it?" "Yes, I swallowed that one last week" replied the professor!



10th December Meeting –
Christmas Lunch

January – No meeting

11th February at 2.30pm in St
Chad's Church –

AGM and Entertainment

Phone 01926 336749 if you would
like further information

Complete FLOORING

Carpets

Vinyls

Wood

- * Supplied and fitted
- * Sample swatches
- * Free quotes
- * Re-stretches/adaptions

(Will fit customers own Materials)

Call Dylan 07866 638674 / 01926 315116

Email: complete.flooring@btinternet.com

www.completeflooringwhitnash.co.uk

TOM RODGERS TREE SERVICES

**Prompt Professional Tree Care
Established Local Tree Surgeons With Reputation
for Quality Work at Competitive Prices.**

- £5 Million Public Liability Insurance
- All Aspects of Tree and Hedge Work
- Stump grinding
- Domestic & Commercial
- Local Authority Approved
- 24 Hour Call Out
- Dangerous Trees Removal
- Member of Arboriculture Association

FREE
QUOTATIONS
AND ADVICE

01926 810716

07958 794180

www.tomrodgers.co.uk

Church End, Manor Road, Stockton CV47 8JF



Your recycling and rubbish collections will change over Christmas

There will be **NO** recycling and rubbish collections on Wednesday 25th and Thursday 26th December 2013 (Christmas Day and Boxing Day).

This will affect everyone's collection days during Christmas week – please refer to your collection calendar at home or the table below:

Your normal collection date for grey bins/rubbish sacks, green bins or red boxes/bags:	Your amended collection date for Christmas week:
Mon 23 rd Dec 2013	Sat 21 st Dec 2013
Tues 24 th Dec 2013	Mon 23 rd Dec 2013
Weds 25 th Dec 2013	Tues 24 th Dec 2013
Thurs 26 th Dec 2013	Fri 27 th Dec 2013
Fri 27 th Dec 2013	Sat 28 th Dec 2013

Normal collection dates will resume from Monday 30th December 2013 and collections will happen as normal on New Year's Day (1st January 2014).

In the event of bad weather this winter your recycling and rubbish collections may be interrupted. Why not sign up for our 'email alerts' so we can send you the latest news on your collections! Simply visit www.warwickdc.gov.uk/emailalerts

Website: www.warwickdc.gov.uk/christmasrecycling

Email: contract.services@warwickdc.gov.uk

Telephone: 01926 353365

Thanks very much for your help

Becky Davies

Recycling Development Officer Waste Management



Helping Hands

Est. 1989

Our **Bishops Tachbrook** care team has been providing award winning quality homecare since 1989. We offer you home care that enables you or your loved one to remain at home with compassion and dignity by assisting with:

Personal care, housekeeping, companionship or providing a break for an existing family member or care-giver.

So if you are looking for an alternative to residential care or just support for you or a loved one, then we're here to help - from 30 minutes to 24 hours per day, 7 days per week.

Do you need a helping Hand?



To find out how we can help, call
0808 180 1033
or visit www.helpinghands.co.uk

Gift Vouchers
available



On-line shop
for holistic gifts

For a more holistic, spiritual approach

Facials - Reflexology - Aromatherapy - Crystal Therapy
Reiki - Hopi Ear Candles - Indian Head Massage
Emotional Freedom Techniques (EFT)

Tel: 01926 741255

Email: louise@heathcoteholistics.co.uk

Web: www.heathcoteholistics.co.uk

Free Parking



THE NHS DIRECTORY
OF COMPLEMENTARY AND ALTERNATIVE PRACTITIONERS
103 Heathcote Road, Whitnash CV31 2LX



FIRSTLY, PLEASE RESPOND TO THE HOUSING NEED SURVEY!

It has been a busy month for major planning applications. Along with concerned residents the Parish Council has been raising concerns about the development of 280 houses at Woodside Farm (on the north-eastern corner of the Harbury Lane junction) and the 20 acre solar energy installation proposed for Brickyard Farm, in fields north of Mallory Road and close to the western edge of the village. The Woodside Farm re-application was approved subject to the land allocated to public open-space being increased. Now that this scheme has been given the go ahead the Parish Council has requested to be involved in these final discussions to help shape the final outcome. Whilst the concerns about loss of farmland and traffic congestion remain, on the positive side this scheme will provide a safer/ more direct access to Harbury Lane Playing Field. And also we must prepare to welcome new residents in the parish.

The **solar power installation planning application** was withdrawn on the day of the Planning Committee meeting. It is expected that a slightly smaller scheme will be submitted at a later date, so we will continue to monitor this proposal closely.

Councillors have agreed to keep the **allotment rents** at £15 per plot for 2014. However, the water situation is still being investigated by Councillors with Severn Trent.

A contractor was due to **lay slabs around the bus stop opposite The Leopard** at the end of November.

Three trees are due to be planted on the Village Green at the end of November/ beginning of December as part of the planting schedule.

The Parish Council is considering promoting a **Wheelie bin sticker campaign** in the parish to encourage drivers to reduce their speed to 30MPH. The Police and members of the Community Speed Watch enthusiastically support this venture.

The next meeting is on Thursday, 12th December 2014.

Improvement of Footway Lighting in Bishop's Tachbrook

Bishop's Tachbrook will see a major improvement of the majority of lighting columns during the next few months up until March 2014.

- 1) All the remaining 23 lamp posts in Church Hill, Church Lees and the bottom end of Mallory Road - 23 in all - will be converted to the Swan necked "Iffley" type.
- 2) All the lamp columns on Mallory Road will be painted black - over time this will soften to a dark grey.
- 3) Obsolete concrete lamp columns on the north side of the village will be changed.
- 4) Elsewhere in the village luminaires will be cleaned and bulbs changed from orange glow to white.

The Parish Council has allocated £5k from this years budget towards this comprehensive programme which will cost around £80, 000.

TOLLGATE FARM, BISHOPS TACHBROOK

Bronze Free Range Turkeys

**Traditional Barn Reared
White Turkeys**

Free Range Christmas Cockerels



Quality poultry produced for
50 years.

01926 651790

www.freerange-turkeys.co.uk

Proprietor Charles Hammond, Tollgate Farm Poultry is a member of the
Traditional Farm Fresh Turkey Association

K9 Cuts **Professional Dog Grooming**

Call Debbie at Compton Verney

Landline: 01926 641149

Mobile: 07789687762

**£5 off 1st Appointment
With this Advert
- Book Now -**

Bishops Tachbrook Junior Youth Club

Monday 6.30-8pm in the School Hall

During Term Time Only

£1.50 per session and yearly
membership of £2 payable
in September.

For more information
contact Anoushka on 311538 or
anoushka76@hotmail.com
or come along on a Monday.

We desperately need more adult
volunteers to come and help at our club,
if you can spare a couple of hours on an
odd Monday then please let me know.



NEIGHBOURHOOD PLAN



The Neighbourhood Plan will help ensure Bishop's Tachbrook is a fantastic place to live – whatever your age

Our Plan for the future includes the themes below

Better Transport & Traffic Management

Connecting us with local and wider amenities, including better bus services and improving cycle and pathways. Improving road safety by reducing the speed of ever increasing cut-through commuter traffic is a top priority.

Developing Community Amenities

A vibrant, peaceful and healthy community requires ever improving amenities that respond to changing needs.



Enhancing Leisure & Well Being

Sport, recreation, adult education, clubs, societies, family and group events and other activities promote community spirit and well being. It's essential to improve facilities and services wherever possible.

Looking After Our Historical Heritage

The centre of the Village is a conservation with Grade 1 listed St Chad's Church and six Grade 2 listed houses. There is an aspiration to enhance this area and make it the attractive heart of the Parish.

Improving Safety

Keeping our Parish safe, working closely with local Police, fostering our Neighbourhood Watch and ensuring new developments are designed to discourage crime.



Safeguarding Community Assets

Open spaces, playing fields, woods, buildings like the pub and social club, all enrich the recreational, cultural and social life of the Parish. Identifying our Assets is important in order to protect and enhance them.



Protecting Our Rural identity

We are surrounded by beautiful countryside. So it's thought to be crucial we include policies to protect the rural environment preventing urban sprawl.

Supporting Local Businesses

From farming to Guide Dogs for the Blind, to repair workshops and home workers, helping businesses grow and providing more local jobs for local people is thought to be essential to providing a balanced community.

Land Use and Housing

A central element of the Neighbourhood Plan is to ensure we have the right number and mix of homes to meet changing needs in the coming years. Sufficient housing is vital to sustain existing future generations of family ties and long-term friendships. More...

this month's feature - Housing

Why do we need more housing?

Our population is growing and WDC has identified that by 2029 we will need an extra 150 houses in the village and 650 to the south of Warwick Gates and Whitnash, numbers which are still being challenged.

By contrast, the results of the previous Housing Needs Survey indicated a need for 14 homes in the Parish: a mix of affordable (65%) and market priced (35%) homes.

It is especially important to ensure there are a viable number of children to sustain the future of our much-valued Primary School and to protect it against potential changes to catchment.



HOUSING NEEDS SURVEY

Please send in your response as soon as you can whether you need housing or not



How many homes do we need?

The housing numbers required will be based on the following

- The results of the current Housing Needs Survey - delivered to you recently.
- The parish demography - the age of residents and household sizes etc.
- Residents opinion (based on information gathered at local events)
- The numbers identified by Warwick District Council (based on Joint Strategic Housing Market Assessment).

making Bishop's Tachbrook

ing for our Community



What type of houses do we require?

- The numbers of young people in the Parish is reducing
- The number of older people increasing
- Growing families often leave in the search for a larger home

We therefore need a housing mix that makes provision for the predicted demand for all age groups and income levels.

- Homes to allow for down-sizing or warden-assisted living
- First homes affordable for the young
- Homes for growing families.

Homes for older people could take a variety of forms from small bungalows to a self-contained units or a sheltered home. It has also been proposed we could allocate a small number of plots for affordable, self build houses.

Above all the Plan should provide housing opportunities for local people so that they can remain in the village, whatever their housing need



Where will the houses be built?

Our housing plan must specify the land required on which to build the homes. WDC has assessed all the sites on offer and the recommended area is south of the school and allotments, east of Oakley Wood Road. Other areas have also been assessed and your input is welcome. An independent planning advisor will review all the suitable sites around the Parish.

an even better place to live



What can you do?

MAKE YOUR OPINION COUNT

The final Neighbourhood Plan should contain the views and wishes of as many residents as possible as these will provide a strong evidence base that will carry more weight when it is submitted to Warwick District Council for approval.



KEEP INFORMED

Consultation is a major building block of the Plan. From the outset there have been a range of events including village meetings, stands at the Village Fete, Christmas Fare and other social activities. Articles in the Parish Magazine and leaflet through your door are important in keeping everyone informed. More events and publicity are planned for the coming months so that residents, special interest groups and other stakeholders have the opportunity to comment and put forward ideas at every stage of preparing the Plan.

GET INVOLVED

We welcome your input. Please come and join residents already working together to shape our community's future. Please contact Martin Drew 01926 315306 or email martintactics@talktalk.net.

Results of the Housing Need Survey and discussion on Housing Options will be held at a Village meeting proposed for 18th January. Further details to follow.



How does the plan get approved?

The completed Draft Plan will be subject to a 6 week consultation period. Residents, statutory organisations, local businesses and neighbouring parishes can review it and their comments considered. If appropriate the Plan will be amended before submission to WDC. An independent examiner appointed by WDC will ensure the Plan complies with all legal conditions. If the Plan is satisfactory, WDC will arrange a Parish referendum. If more than 50% vote Yes, the Plan becomes part of the Statutory Development Plan for the Parish and any future decisions on planning will have to accord with our Neighbourhood Plan.

Bonfire Night

People ask all the time how many people came to the Bonfire Night do, and I never know. One minute we're flipping burgers and the next the car park is full of people! It's fantastic that we get such great support from everyone, both before the night with the raffle tickets, and of course on the night when you all turn up whatever the weather.

As usual there are a few special thank yous. A big thank you has to go to Chris, Damon, Adrian at Linleigh Electrical, JP Marshall & sons, Tony, Piers and all of the others for helping to gather the wood and build the fire. Then Tracy, Mandy, Sophie, Hayley, Kitty, Carol and Sue for helping out on the night.

Thanks also to Karen and the Sports and Social Club and the Parish Council for their ongoing support. If anyone is happy to share some of their pictures with us, please e-mail them to cathy.herbert@btinternet.com

And lastly...a date for your diary...7th November 2014 when we'll be celebrating our 10th year!!! We hope to see you all again.

Cathy, Martin and Tony - Village Events Group

Winners of the Draw were:

£100 First prize	donated by the Sports & Social Club	D .Stoneman
Hamper	incl. wine donated by Tachbrook Stores	Faye
iPod Shuffle		James
Biscuits		B.Dulay
Starbucks Gift Box		Lynn
Starbucks Gift Box		D. Arthur

Vinny, the dog speaks out about dog mess!

I am a 2.5 year old English Bull Terrier dog and I live in the village. I have been asked to write a small article, kindly assisted by my owners, about people who do not pick up their dog mess.

I am lucky, I get 4 walks a day around the village, but my owners, come rain or shine, always pick up after me and many of my dog pal owners also pick up and do it well. However, the odd few don't and this gives us all a bad name. I can't pick it up myself; someone else has to do it for me.

There is no excuse, if your dog is off the lead and you can't see where they have defecated, go, fetch, and bag it! I certainly don't like walking in it and I have four paws!

I'm told you can always obtain poo bags, from local pet stores; you can also recycle small shopping bags or purchase them online so there is no excuse for not carrying bags in your pocket. Please pick up, it's so easy but very irresponsible not to!

Vinny 2.5 years x



Mistletoe

I usually buy a sprig of mistletoe for Christmas and hang it in our hall. It is a strange plant with many traditions and myths attached, such as kissing under it and its link to the Druids. There are some ancient ideas about its use by herbalists, although the berries are poisonous to humans. Recently there has been reports of a study at Aberdeen University of its efficacy for some breast cancer patients, not a cure, but a health and wellbeing boost when having treatment. It is a parasite, unable to support itself, so finds a suitable tree to help out. Its white, sticky berries do not seem to be poisonous to birds, who wipe their beaks after eating, and so deposit the seeds on to a host tree. Many host trees are tall and so difficult to reach the mistletoe.

Tenbury Wells is an area of apple orchards and one of the favourite host trees of the mistletoe is the apple, a shorter tree and so easier to reach. Tenbury has a Mistletoe Festival which begins at the end of November and goes on into December, featuring many activities linked to mistletoe. They have an interesting website which gives plenty of information should you want to visit. www.tenbury-mistletoe-festival.co.uk

Ponds and their inhabitants seem to have figured largely in my life recently.

Our nearly two year old grandson loves to visit the ducks and their friends. He even got excited when he saw the life size ornaments belonging to a friend of ours. Children all seem to love visiting the ducks and it is a good introduction to the natural world around them. It is not a

good thing to feed the ducks as we used to do but they are so used to humans that they happily swim about in full view. Feeding bread to ducks and geese in our parks can cause health problems as they don't get a good diet, going for the carbohydrate titbits rather than foraging for natural food.

January is the time of year to think about making a garden pond. If you are thinking about it there is a good website from which you can download information www.pondconservation.org.uk. I would like to create a pond to replace our blue plastic bucket which our common frog has made home but it will not be a good idea while our grandson is so young. Perhaps I should disguise the bucket! If you are able to create a pond it is certainly good for wildlife. Maybe you have an ornamental one with fish and have a constant battle with our friend the heron. Perhaps you could just adapt the pond for frogs and other pond life and give up the battle.

Frogs will begin to think about reproducing in January and return to the pond. They will be ready to mate as soon as the weather warms and the frosts are past. Timing is everything! Toads are about a month later. You might be adopted by a newt and you will certainly see pond skaters and possibly Dragonflies in summer, plus lots of other creatures.

froglife.org is an interesting website for both adults and children. They have just upgraded the site and there are fun things to download as well as information. There are many good books too.

Frog or Toad?

Common Frog

The skin of a frog is quite smooth.

A frog feels moist to the touch.

A frog's back is raised with two ridges down each side.

Frogs move around by hopping on their strong back legs.

If you find frog spawn in a clump its frog spawn. If it is in a long string it is toad spawn.



Common Toad

The skin of a toad is more 'warty'.

A toad feels dry to the touch.

Toads have a more flattened appearance.

Toads walk.



We thought we might have a mouse in the garden when we saw a flash of something small and grey disappearing behind the flower pots. We watched and waited and out came a Dunnock. This small sparrow like bird is so quick and secretive it fooled us for a while. We have been feeding the birds during the summer but they are getting through our offerings more quickly now. So now is the time to help out and don't forget the water, ensuring that you break through the ice on very cold mornings.

A recent report of dead fish is a bit of a mystery. It was not the heron (you can see Roy's photos of the heron here) paying a visit. The fish were lying dead on the lawn having neat holes in their sides and their guts removed. I have a vague idea I have heard of this before but my research has not come up with an answer. If you know who or what might have done this please let us know and solve the mystery! **Not everything will be hibernating until Spring so please do keep a look out and send in your reports.** You can read Steve's report on page 35.



Notice Board

Christmas services at Churches in Whitnash and Warwick Gates

Whitnash Methodist Church

Sunday 1st Dec 10.30am Christingle parade service - All Ages Welcome
Sunday 22nd Dec 10.30am Carol Service

St Joseph's Roman Catholic Church

Monday 16 Dec 6.30pm - School Carol Service
Thursdays 19 Dec. 7.30pm - Christmas Penitential Service
Tuesday 24 Dec 5.00pm - Vigil Eve Mass
11.30pm - Readings with Carols
12.00pm - Midnight Mass
Wednesday 25 Dec 10.00am - Christmas Day Family Mass
Thursday 26 Dec 11.00am - St Stephen's Day Mass
(Altar Servers and their families)

St Margaret's Church

Sunday 22 Dec 6.30pm - Carols by candle light
Christmas Eve 5.00pm - Christingle Service.
11.15pm - Midnight Communion
Christmas Day 8.00am - Holy Communion
10.00am - Family service for Christmas

Warwick Gates Community Church

Christmas Eve 4.30pm - Nativity Service.
Christmas Day 10.30am - Service for all ages

Christmas Presents to keep and remember

***Book: Bishop's Tachbrook
Past and Present
The Story of a
Warwickshire Village £7.00***

***DVD: ½ hr Film:
Tachbrook Times £5.00***
Available from 73 Kingsley Road
(01926 336749 or
breakfast42@tiscali.co.uk)

Allotments

For would-be allotment holders the message is - now is the time to be getting in touch with the soil. Several plots will be coming available in the New Year, including half-plots at just £7.50 pa. Contact Tony Wilkins 314237 - who will show you round.

WI Coffee Morning

In aid of WI funds and
Air Ambulance

Saturday January 11th

10.00-12.00

7, Bishop's Close

All welcome

(Books, Cakes & Raffle)

Christmas Collection of Dog and Cat Food

We are holding our annual collection for Dogs Trust and Avon Cat rescue. If you are able to give tins or packets of food, biscuits or treats, toys, blankets or towels, dog and cat beds, we would be grateful to receive them at either: 41 Mallory Road - Jackie or 29 Holt Avenue - Lynda. Many thanks on behalf of the dogs and cats at the Rescue Centres.

Tuesday Club

3rd Dec Line Dancing
10th Dec Party at Club
17th Dec Flower arranging

Wishing a Merry Christmas and Happy New year to all our members. We enjoyed our Christmas Party on 2nd November. Well done to Doreen for all she does for us throughout the year.

New members always welcome.
Thank you very much.
Pat Bromley (833377)

Christmas Shoe Boxes

A big thank you to all of you who have been kind enough to fill the Christmas shoe boxes. 70 shoe boxes are on their way. God bless you all. Kath Reason

There is no magazine in January. Next deadline for items is 15th January for the February issue. Please send to catherine.keen@btinternet.com

Thinking about keeping Honeybees?

Warwick & Leamington Beekeepers are running a six week course to help get you started.

This course suits those who are planning to keep their own bees, giving you all the information you need to keep them safely and enjoy them with confidence. Places are limited, so please book as early as possible.

Start date: Tuesday January 7th 2014

Time: 7.00pm—9.30pm

Venue: National Beekeeping Centre, Stoneleigh Park, near Kenilworth.

Cost of course: £55

For further details and a booking form: www.warleambees.com

Or contact: Val Dillon 02476 417374 Email: val.dillon@outlook.com



LOCKE & ENGLAND

AUCTIONEERS & VALUERS

Established 1834

Auction Every Thursday

Viewing Wednesday 12.00noon - 7.00pm & morning of sale from 9.00am

Bi-Monthly Antique & Collectors' Sales

Regular Valuation Days

Specialist & Commercial Auctions

Valuations for Insurance, Probate & Family Division

Collection Service

ENTRIES INVITED FRIDAY, MONDAY & TUESDAY



12 Guy Street, Leamington Spa, Warwickshire CV32 4RT

01926 889 100 www.leauktion.co.uk



Do you run a business and are any of the following a burden?

* Company accounts *

* VAT *

* Taxation *

* Payroll Services *

* Company Secretarial Work *

Or do you need new systems and procedures?

If the answer is yes, then contact us.

FMS (Warwick) Ltd

114 Kingsley Road,

Bishops Tachbrook

Tel: 01926 314286 (Evenings)

or 07802 735491

michael.jaggard@btinternet.com

(Sage & Inland Revenue Agents)

C PULLIN AND SON

Monumental Masons

Five generations
of Quality Manufacturing
and Service

All Aspects of
Monumental Masonry



Showroom at: 19A High Street

Leamington Spa CV31 3AW

Telephone: 01926 426435

www.pullinsmemorials.co.uk

Pupils from Bishop's Tachbrook School in Year 2 and Year 6 all attended the service at 11am on November 11th.

Pupils had made a wreath of poppies from their own handprints which they laid during the service after singing:

"Turn your thoughts on this occasion
To those who fought and died in the war,
Years have passed and time has forgotten
But we will remember the soldiers once more."



Pupils all dressed in pink for a day and bought in small change in silver to raise £197 for Breast Cancer research.

Pictured are pupils in pink with all the spare change!



DID YOU KNOW THERE WAS A BEAUTY SALON IN THE VILLAGE?



Julie is based at her Home Salon in Parsonage Close, and has over 20 years experience in the Beauty Industry, specialising in:

- SKIN ANALYSIS EVENTS by the INTERNATIONAL INSTITUTE of ANTI-AGING • COLLAGEN STIMULATION THERAPY •
- ENVIRON ANTI-AGING FACIALS • CHEMICAL EXFOLIATION FACIALS • NON-SURGICAL FACELIFTS • ELECTROLYSIS •
- COSMETIC INJECTIONS – FILLERS AND MUSCLE RELAXANTS • INTENSE PULSE LIGHT (IPL) for PERMANENT HAIR REDUCTION • RELAXATION FACIALS • HOT LAVA SHELL MASSAGE • PEDICURES • SOAK-OFF GEL POLISH MANICURES (that last for weeks) • WAXING • TINTING • PAMPER PACKAGES • MAKE-UP PARTIES • PRINCESS PARTIES •

Prices and Special Offers at www.beautyondemand.net or call Julie on 07770 881895



SYCAMORE CARPENTRY & MAINTENANCE



Interior & Exterior Painting
All work around the Home & Garden
Door Hanging
Shelving

Laminate & Wood Flooring
Kitchen Fitting & Worktops
Fencing, Gates etc.



Contact Kev Harris
Tel 01926 774795 Mobile 07769 551318

‘Where on earth are they?’ was the theme of our November meeting. Each month we pray for particular MU leaders in dioceses around the world, people and places with fascinating names we often don’t know how to pronounce but who, nonetheless, work very hard with their branches and projects to fulfil the aims of the MU. So we had a large map on the table, books full of information and we found out about dioceses in Canada and the USA, Kasai in the Congo, Yirol in Sudan and Moray, Ross and Caithness in Scotland. We put markers on the maps and discovered what each group was focusing on at present so that our prayers for them were more relevant.

As I write my cupboards are being stocked up ready for the Big Bake for our Coffee Morning on 23rd November. We hope, as always, for a good turn-out simply because all of the money raised goes to such good causes. The raffle proceeds will buy Christmas gifts for 6 prisoners’ children, while the main money will go, probably, to the MU Emergency Fund. We are all aware of the desperate need of millions of people in the Philippines and there are some MU members there who have combined their efforts with the Episcopal Church Women to try to re-educate people so that they can stamp out endemic violence against women.

Talking of violence, we had an excellent speaker at our Members Day in Rugby recently who spoke on exactly the same subject. Here in Warwickshire he has set up a new Sexual Abuse Referral Centre at

the George Eliot Hospital in Nuneaton, known as The Blue Sky Centre. It provides a free and confidential service with separate facilities for adults, children and young people who can self-refer a sexual assault. It has been used by over 1,000 people since opening in April which is a very sad indictment on our society. Most abuse happens within the family, mainly by partners, but people of any age can be victims, male and female. There is not enough space here to go into detail of how caring and understanding the managers and crisis workers are at Blue Sky but if you would like to know more, then please give me a ring. People can call 999 if they are at immediate risk of harm, or 101 for a non-emergency or alternatively ring the Blue Sky Centre on 02476 865 505. They are there for the whole of Warwickshire and Coventry and transport can be arranged in an emergency.

Now to happier thoughts and Angels!

Do you have a guardian angel? At our next meeting on Dec 3rd, Elaine is coming to share some thoughts with us about Angels. Come and find out more at 2 pm, 81 Kingsley Rd. And our January meeting will be put forward a week to Tuesday 7th Jan for our Christmas Lunch at the Leopard.

Jenny Lister - 427922





Lizzy Pickles Catering

Your Local Caterer

For All Occasions
Business Lunches
Parties
Weddings
Christenings
Funerals
Buffets
Training Sessions

Home of the Lizzy Pickles
Sausage Roll

Most Items Homemade

Menus Tailored To Suit
Your Needs

Lunches and Buffets from
£3.95/head

Established over 10 years

To Discuss Your Catering Requirements call:

Lizzy Pickles

Tel: 01926 422438

Mob: 07917 036757

email: lizzy.pickles@tiscali.co.uk
Kingsley Rd, Bishops Tachbrook

Moving home?

Need some extra space?

Safe, secure storage for domestic and commercial uses

Flexible
storage
options

Discounted
moving
services

Van
rental

Flexible
opening
hours

Daily
storage
rates

Packing Materials Available*



Harbury Lane, Leamington Spa, CV33 9QB

Tel 01926 882282

www.squabstorage.co.uk

*Free delivery to local area



Spotlight on ... FMS

Name: Michael Jaggard **Business:** FMS(Warwick) Ltd **Year business started:**1996

Tell us a bit about what your business does: Accountancy services/tax returns/payroll and Company Secretary functions.

Give us a bit of background to the business: After years as a Financial Director I started this business. My daughter also qualified as an Accountant and has worked in the business for 7/8 years. We offer personal service seeing clients often outside hours and with low overheads offer very reasonable rates. We are steadily growing the business and will continue to further our interest in the smaller sector.

How did you get into the business? I started in banking but soon switched to Accountancy which I have continued with for 40 plus years.

How long have you lived in Bishop's Tachbrook? Born in Leamington – educated Leamington College and lived in Tachbrook since 1968.

People are always surprised to learn this about me, but...our other interest is classic cars and motor cycles and in 2013 FMS diversified offering to provide a wedding car service etc.

Steve Harvey's Nature Report

As Scandinavian Thrushes brave the North Sea and all its weather, heading for us for what we all hope will be a kinder winter, they are joined by Starlings, Blackbirds and many more. What a relief to find a bonanza of berries this year. Rowan and Hawthorn, a bumper crop of apples and plenty to go at in the gardens. So, worth the trip.

Here young Goldfinches that were pale brown now have beautiful red faces and black caps, just like their parents. Young Wood pigeons start life without the white collar, now they are wearing one.

On a warm, sunny day in October I was working on a house in Warwick. A steady stream of Ladybirds were arriving, landing on the wall of the house. Most of them made their way into the large open porch, crawling into the corners, forming large clusters. The houses either side didn't have a Ladybird between them! I guess the first ones to arrive and find it's a perfect place to hibernate probably give off a pheromone to let all the others know. One of the first things they do when they wake is mate so, it saves a lot of time if you're together. They may have discovered Speed Dating!

Skylarks are nowhere near as common as they used to be, but in the fields around Tachbrook they do very well. The Larks are a touch smaller than a Starling and sing for large parts of the year. In the field behind us I watched two of them rising higher and higher in a strong wind and rain, small wings continuously beating, tiny lungs rapidly filling and managing a cascade of melody that lasted several minutes. I'd like to have seen Pavarotti compete with that!

Fully insured

Family-run Business

JP Marshall & Sons

Roofing Specialists & General Builders

- Re roofs • Repairs • Slating • Tiling • Flat roofs • Leadwork
- UPVC Fascias • Soffits • Guttering • Velux windows
- Pointing • Brickwork • Garden decking

www.jpmarshallandsons.co.uk

01926 411660

07967 012114

Est 1968

JP Marshall & Sons

Roofing Specialists & General Builders

We are a fully insured small family run business, established in Leamington Spa in 1968 by Joseph Patrick Marshall, and now run by his sons Kevin and Michael.

At J.P Marshall & Sons we take pride in every job we do, and pride ourselves in achieving the best quality finish. We welcome customer or building control inspections.

We undertake all jobs from replacing slates or tiles, re-pointing or lead work, to complete strip and re-slate, re-tile or flat roofs, and new-build. We also undertake insurance work. We offer a friendly no obligation estimate service, and guarantee all work.

So for a fast, friendly, reliable and professional service to the highest standards, with no corners cut, do not hesitate to call J.P Marshall & Sons.

www.jpmarshallandsons.co.uk

Tel: 01926 411660 Mob: 07967 012114

Kevin Marshall



IS YOUR LOCAL VOLUNTARY VILLAGE GROUP SHORT OF FUNDS?

Each year the Parish Council sets aside funds to support and enable community development within the Parish of Bishop's Tachbrook. The 2013/14 second funding round will start in December with all applications having to be filed with the Clerk by 31st December. Incomplete documentation and late submissions will not be considered. Full details are available on the website or please contact the Clerk. Applications are invited from:

- Organisations with a long term commitment to a sporting, educational or cultural activity
- Organisations with a commitment to activities which benefit the local community
- Events for such organisations which demand substantial costs

Applications are welcome from local organisations, a local group of a national organisation or a new group whose purpose is to provide activities for the benefit of the group and local community.

If you are interested in applying, you will be required to provide the following details:

- A written application outlining the aims/purpose of the organisation
- A detailed proposal of the project/programme for which funding is required and the benefits it will bring to the parish
- A copy of the organisation's accounts for the previous year
- An agreement to publicise the activity in the Parish Magazine

Subsequent details of how the grant has been spent

Written applications (by letter or form) should be submitted to Mrs Corinne Hill, Parish Clerk, Gaydon Fields Farm, Gaydon CV35 0HF or via email to parishclerk@bishopstachbrook.com. Application forms are available from the Clerk on 01926 641220 or by email.



Simons Systems



Available for all your computer requirements including:
PC's & Laptops, New & used systems, Repairs & upgrades
Virus/Malware Removal, Data back & Windows re-installation
Upgrading memory/Hard drives/Rom drives/Graphics, etc
Internet - modems fitted, wireless, networking.
Any repairs or computer problems. ***No call out charge***

T: 01926 316 119

E: sales@simons-systems.co.uk

M: 07751 811 097

W: www.simons-systems.co.uk

C.G. MOTORS

Established for 33 Years

ALL MAKES AND MODELS

Your local garage at Brookside Farm

First left past The Leopard

Bishops Tachbrook

01926 313256

SERVICING*MOT*REPAIRS*WELDING

ENGINE DIAGNOSTIC CHECKS

RESETTING OF WARNING LIGHTS

READING AND ERASING FAULT CODES

December Rotas

Cleaning

7th Jo Shaw
 14th Liz Sheehan
 21st Fiona Meades & Jo Jordan
 23rd Esther Boyle & Gill Yarwood
 28th Sue Hitchin

Assistant Stewards

1st Graham Leeke
 8th Kevin Pantling
 15th Debra Cokayne
 22nd Huw Davies
 24th John & Ros Pratt (Midnight Mass)
 25th Graham Leeks (Christmas Day)
 29th Kevin Pantling

Sidespersons

1st Ray & Anne Allen
 8th Vera Vale
 15th Rod Smith & Mac McGarrick
 22nd Sheila Hayward & Kath Reason
 24th Ray & Anne Allen (Midnight Mass)
 25th Mervyn & Desnee Fletcher
 29th Vera Vale

Coffee

1st Fiona Meades
 8th Gill Yarwood & Rod Smith
 15th Ros Pratt & Jane Everett
 22nd Roy & Maralyn Brown
 29th Fiona Meades



January Rotas

Cleaning

4th Desnee & Mervyn Fletcher
 11th Jenny & Peter Lister
 18th Jo Shaw
 25th Liz Sheehan

Assistant Stewards

5th Debra Cokayne
 12th Huw Davies
 19th Graham Leeke
 26th John & Ros Pratt

Sidespersons

5th Rod Smith & Mac McGarrick
 12th Sheila Hayward & Kath Reason
 19th Mervyn & Desnee Fletcher
 26th Ray & Anne Allen

Coffee

5th Maralyn & Roy Brown
 12th Gill Yarwood & Rod Smith
 19th Ros Pratt & Jane Everett
 26th Fiona Meades & Joan Alderman

Country Dancing Club

2nd Thursday of every month

8pm at Sports and Social Club

Contact Julie Jaggard 314286

All welcome!



60s, 70s, 80s, 90s

and
Today's Music

Perfect for all Occasions

For More Info Call
07932 081583



FOAM

CUT TO ANY
SHAPE & SIZE

Replacement sofa
cushions a speciality

JORDANS

14 High Street
Leamington Spa
CV31 3AN

Tel. No. 01926 421330
www.foamcushion.co.uk

ALLENS AERIALS

TV AERIALS-DIGITAL AERIALS-
STEREO AERIALS

Phone me last for price match.
Support your local family man.

NO VAT
OAP DISC
BEST PRICES
EST. 30 YEARS
07775684062

Warwickshire Young Voices – ten performances and counting!

What a start to the academic year! This autumn half term has been incredible for WYV as we started the term with over 100 children joining us across the range of our activities. The South Warwickshire choir is full to capacity on Thursday evenings at Harbury and the new Leamington Choir has had a great start. The Saturday morning Make Me Musical classes are both full, with additional demand meaning we are considering offering additional places.

The children have been very busy. Our choir members will have performed at TEN events by the end of this term, including filming for the BBC's Songs of Praise Remembrance Day Special, Singing for the Bishop at Birmingham Cathedral, recording two newly composed works and performing at the Leamington Christmas light switch-



on. The Make Me Musical children have also been busy learning how to read and write their own musical scores with some impressive results - especially from the 2 and 3 year olds!

This busy term will conclude with our own **Christmas Production 'The Legend of the Christmas Flower'** telling the moving story of an ordinary little girl called Pepita, whose Christmas gift ensured the place of the Poinsettia in Christmas tradition for years to come. The production will involve all the youngsters who take part in WYV activities – aged 2-16 - and is sure to be a spectacular event.

'The Legend of the Christmas flower' takes place Saturday 14th December, matinee at 3pm and evening performance at 6pm at Dale Street Methodist Church, Leamington. Tickets are £7.50 adults, £4.00 concessions (under 3's free) or a family ticket for 2 adults and up to 3 children £20 including refreshments. Tickets available on 01926 810179 or online at www.warwickshireyoungvoices.org

To keep up to date with all WYV activities please find us on facebook. If you would like more information about any of our activities, or to sign up for sessions starting in January for the Spring Term, please visit our website.

Helen Iles Warwickshire Young Voices



Come and join us
at Bishops Tachbrook
Sports & Social Club,
Kingsley Road

Each Thursday (term-time)
9.30 - 11.00am

For any parents/carers with
pre-school children

Any questions?
Contact Lisa
on 01926 334708



Are you interested in being a Brownie?

Bishop's Tachbrook Brownies meet on a
Wednesday at 6pm till 7.30pm. We have
fun, make, work on badges, go on
outings, sing, play games and meet new
friends. If you are interested in being a
Brownie when you are 7, please contact
Caroline Loveday on 429082 or
07796 034371 or
carolineloveday@sky.com
to find out more.



Girlguiding UK
girls in the lead

Warwickshire Young Voices

We rehearse Thursday Evenings during term time at Harbury Village Hall from 6.30-7.30pm. We take all children age 7-16 and offer a free trial session (normal subs £30 per term), We already have children from Bishop's Tachbrook who attend regularly and we would welcome more. Please go to www.warwickshireyoungvoices.org for more information.

Church Officers

Vicar Rev Elaine Scrivens Tel: 426922

Church Wardens Andrew Day Tel: 889417 Linda Stevens Tel: 334812

Deputy Church Warden Rod Smith

Treasurer Vera Leeke Tel: 882675

Magazine Editor Catherine Keen Tel: 886980 catherine.keen@btinternet.com

Advertising Editor Pam Davies btachbrookmagad@live.co.uk

This is a non-profit magazine supported by personal donations and contributions from St Chad's Parish Church Council and Bishop's Tachbrook Parish Council. All adverts are printed in good faith. The Bishop's Tachbrook Parish Magazine cannot take any responsibility for the contents of the advert or the services provided by the advertiser. Printed by: Cadman Printers Unit 7D Jenton Road, Sydenham Industrial Estate, Leamington Spa CV31 1XS Tel: 01926 423742

FISH & CHIPS

The 
Leopard

TAKE-A-WAY

TELEPHONE ORDERS ARE WELCOME!

01926 426466

£6

