

# parish magazine

St Chad's



Dec 14

M  
E  
R  
R  
Y  
  
C  
H  
R  
I  
S  
T  
M  
A  
S



A  
N  
D  
  
H  
A  
P  
P  
Y  
  
N  
E  
W  
  
Y  
E  
A  
R

*The Angels for the Nativity of our Lord St Chad's Church*

# THE BRASSERIE AT MALLORY



## Food at The Brasserie

The Brasserie boasts a unique sense of style, with its art deco inspired interior, walled gardens for al fresco dining, a stunning cocktail bar and upstairs areas for private dining. It is a fantastic place to enjoy a relaxing meal out with friends or family offering Afternoon Tea, Sunday Lunch, Children's and Vegetarian Menus alongside the A La Carte.

Come and dine from our daily 3 course set fixed price menu  
Monday - Friday, Lunch or Dinner, £19.50

## October & November Dining Offer

**3 courses for the price of 2**

Enjoy dining in The Brasserie with 3 courses for the price of 2 when dining from the A La Carte menu!

Monday - Friday through Oct & Nov  
(Max 6 people, offers exc. steak)



MALLORY COURT

Mallory Court  
Warwickshire, CV33 9QB  
T: 01926 453939  
E: reception@mallory.co.uk  
www.mallory.co.uk  
f/mallorycourt @mallorycourt

# THE WATERSIDE

CHAMPAGNE BAR • BRASSERIE



## Sunday Lunch at The Waterside

The Waterside Brasserie offers guests a relaxed dining experience in a chic environment, complete with its own Champagne Bar and beautiful interiors. Our chef will prepare a variety of unique and mouth-watering dishes using only the best seasonal local ingredients.

£19.50 for two courses • £23.00 for three courses.

Snacks and salads from £7.50 per person.

## Jazz Lunches

**Every third Sunday of the month**

Enjoy a lazy lunch to the soothing sounds of jazz - the perfect way to round off your weekend

THE  
**ARDEN**  
HOTEL

BAR • BRASSERIE • TERRACE

The Arden  
Stratford-upon-Avon, CV37 6BA  
T: 01789 298682  
E: reception@theardenhotelstratford.com  
www.theardenhotelstratford.com  
f/thearden @ardenhotel

**As I write this letter we are in the middle of what the church calls the Kingdom Season – this is the time between All Saints Day and the Festival of Christ the King, when the church focuses on the reality and hope of God’s Kingdom.**

By the time you are reading this we will be in the Season of Advent – the period of waiting for the gift of God incarnate, Jesus Christ. When I was training for ordination, I remember this time being referred to as “the Season of Joyful Hope”. Hope for the promise and reality of God’s Kingdom and Joy at the birth of the Christ Child.

In many ways I agree with this description of the two months before Christmas but sometimes, as the nights draw in and the realisation of all that has to be organised before Christmas arrives, God is often hard to find. When thinking about this I was reminded of a Billboard we saw in America in the summer. It said **‘If you think God is far off, who do you think has moved?’** During Advent we should not just be waiting for the coming of God at Christmas but we should be seeking out ways that God is working in our communities as we prepare for Christmas.

One way that God is evident is in the work of the **Leamington and Warwick foodbank**, our local branch being in St. Margaret’s Church Centre, Whitnash at 1pm – 3pm on a Monday. A foodbank works in the following way: food is donated whether by schools, churches, businesses, individuals, or through supermarket collections. It is taken to a warehouse where it is sorted by volun-

teers according to type and ‘best before date’. They also check it is undamaged (and that it can be used in a food parcel) and pack it into boxes and store it, ready for use. Food is then taken to foodbank centres, where it is made up into food parcels for clients. Care professionals such as doctors, health visitors, social workers, Citizens Advice Bureau staff, welfare officers, the police and probation officers, amongst others, identify people in crisis and issue them with a foodbank voucher. Clients bring their voucher to a foodbank centre where it can be exchanged for three days supply of emergency food.

At the centres volunteers meet clients over a cup of tea and are able to signpost people to agencies who can help resolve any longer-term problem they may have because foodbanks are an emergency food-provision service, so it is important to get people in touch with organisations who can help them address these issues. It is good that in this area the church is so involved with this important work. If you would like to make a donation to our local foodbank then items can be dropped off at church or if you prefer at the vicarage or Tesco Warwick. Having been in touch with our local organisers they suggest that small jars of coffee, teabags, microwavable or tinned desserts and biscuits are particularly welcome at this time of the year. For a comprehensive list do visit the website <http://warwickandleamington.foodbank.org.uk/get-involved> and download a foodbank shopping list.

**Continued on page 5**

## **Rob Loveday Electrical Services**

**NICEIC Part P Approved  
Electrician  
and  
City & Guilds Qualified PAT tester**

**The local electrician you  
can rely on - no job too small**

**Call Rob for a fast, friendly  
and efficient service**

**Mobile : 07825 345009**

**Office : 01926 429082**

**Email:- robertloveday@sky.com**



## **Graham Lewis Carpets**

**BISHOP'S TACHBROOK**

**Carpet supply,  
fitting and  
cleaning**

**01926 882986**

**07759 773688**

## **KITCHENS & BATHROOMS**

***'Your local family business est since 1985'***

**From a simple refurbishment to  
complete install**

**Replacement doors, drawers &  
worktops made to any size**

**Full design service offered**

**Project managed or supply only**

**Large local showroom**

**Our own employed team of fitters**

**Quality customer service**

**DIAMOND INTERIORS**

**01926 332288**

**27 Hurlbutt Rd, Heathcote Ind Estate**

**Leamington Spa, CV34 6TD**

**[www.diamondinteriors.net](http://www.diamondinteriors.net)**



During this time of the year we also need to be attentive to those seeking God by coming to Church for the first time, or for one of the few times a year that they might come. One of the wonderful strengths of St Chad's is its wonderful welcome to all who come through the doors, and this Advent and Christmas will be no exception. Surprisingly for a small church we will welcome hundreds of people for carol services, one off events, and other seasonal services. On all these occasions we, as the community who regularly gathers at St Chad's, learn again and again of our particular Anglican calling to be the Church that belongs to the whole Community – that anyone who lives in this Parish should be able to feel that St Chad's is their Church, and through that to find and meet God in thought, word, prayer, and in the faces of those they meet. We do want to welcome everyone and so do check to see what services are happening and come and worship with us.

Through this season of joyful hope I pray that you will receive the gift of time and space to wait and watch for the Christ-child, and through that discover that God's love and wonder and joy is closer to us than we could even imagine.

With love and prayers Elaine

Many thanks to everyone for all the prayers and good wishes I have received as I've recovered from my hip replacement. I have felt totally surrounded by God's love and the love and care of many in our community. Elaine

## Services over Christmas

### **30th November 4pm - Christingle Service**

Do come along and join us for this lovely service of light. It's a great way to begin Advent. Young and not so young are welcome to join us. The service at 10am will be Holy Communion.

### **14th December 6pm - Carols on the Green.**

Followed by Mince Pies, Mulled wine and Hot blackcurrant!

### **19th December 6:30pm - Carols @ The Leopard**

Luke is putting on a tea and coffee station and mince pies. The bar will be open for anyone who wants something a little stronger!

### **21st December 6pm - Carols by Candlelight**

Come join us to hear your favourite carols and readings. There will be mince pies and mulled wine after the service.

### **24th December 4pm - Crib Service**

This is when we remember the real meaning of Christmas. There will be a Nativity Play during the service. Please come dressed up as angels, shepherds or kings and join in our celebrations!



# TOLLGATE FARM, BISHOPS TACHBROOK

**Bronze Free Range Turkeys**

**Traditional Barn Reared  
White Turkeys**

**Free Range Christmas Cockerels**

Quality poultry produced for  
50 years.

**01926 651790**



Proprietor Charles Hammond, Tollgate Farm Poultry is a member of the  
Traditional Farm Fresh Turkey Association

## Family Owned, Full-Time Nursery Childcare



**Banana Moon Harbury**  
Ivy Lane  
Harbury  
CV33 9HN

- Offering childcare from 7:30am – 6:30pm
- Welcoming children from 3 months – 5 years
- Open 51 weeks per year
- Breakfast & two home cooked meals per day
- A loving and nurturing, educational environment
- Under 2s - £43/day, Over 2s - £41/day
- Half days and sibling discount available

- Get in touch to find out more:
- Tel: 01926 612374
- Email: [lucy@bananamoon-harbury.co.uk](mailto:lucy@bananamoon-harbury.co.uk)
- [www.bananamoon-harbury.co.uk](http://www.bananamoon-harbury.co.uk)



# BT Pre-school

Hi,

**We are Bishop's Tachbrook Pre- School children.**

This term we have got a Special visitor come to stay in the nursery. It's Percy the Park Keeper, his shed and friends, Mr Fox, Mr Mole, Mrs Hedgehog and of course the Mice. Percy's shed is somewhere where we can read his stories and play. Oh and meet some of his friends too.



We also have a brilliant NEW Mud kitchen. It's fab! The grown-ups say we will do lots of learning whilst playing in it, but we are having a great time making Mud pies, Chocolate cake and Soup, by counting out each spoonful then adding together how many we have got. We get very messy which is the best bit!

Also we are looking at Celebrations and Festivals. Last week we looked at Diwali. We had rice, lentils and chickpeas in a tray and we tried to make patterns called 'Rangoli Patterns.'

We have just heard we are going to make Christmas things soon which sound amazing, so watch this space.

Bye!

**We still have some places available but are filling up fast. If you would like your child to join the Pre-School Nursery we charge £12.50 per 3 hour session and £27.50 for a full day. Please call 01926 313508 and speak to a member of staff.**



# Sureway Heating Services

Your **central heating** and **gas boiler** is a vital part of your home. You rely on it all year round to keep you warm and heat your water. We understand this and we have **over twenty seven years experience** in keeping this important part of your everyday life running smoothly, safely and efficiently. Our plumbing techniques are specialised to cater for heating repairs, general plumbing and specialised bathrooms.

- Boilers & Central Heating Services
- Repairs and Installations
- Landlords Gas Safety Certificates
- Service & Repairs of Gas Fires
- Bathrooms & Wet Rooms
- Warm Air Heating & LPG

01926 426 715 or 01926 337 157  
1 MORRELL STREET, LEAMINGTON SPA,  
WARWICKSHIRE, CV32 5SZ



www.surewayheating.co.uk

# Drop Dead Gorgeous Curtains

Beautiful Bespoke Curtains, Cushions and Roman Blinds.  
All made to measure and sewn by hand.

I can supply a range of fabrics and poles or I'm happy to work with yours.

Free measuring and free fitting.

I also take on curtain alterations big or small.

Please call Sharron for friendly and helpful advice or to arrange a free quote on: 01926 612226 or 07760395805

Email: [dropdeadgeorgeouscurtains@gmail.com](mailto:dropdeadgeorgeouscurtains@gmail.com)

Or visit my website [www.dropdeadgeorgeouscurtains.co.uk](http://www.dropdeadgeorgeouscurtains.co.uk)

I also offer sewing classes covering a range of topics and techniques or can tailor one to your needs, please visit my website for details and call me to book a place or make an enquiry.





Rye Fields is built on a pile of rubble with **very** heavy clay soil as is most of this side of the village I am sure.

We have been in the village for many years and have a small but well-loved vegetable patch in our garden on which we have persistently tried to grow carrots. The results of our efforts have been puny, mis-shapen and tiny because carrots simply do not like clay soil.

Earlier this year, to increase the amount of growing space we have, Kevin built a simple, small, raised bed from old sleepers and we lined it with light weed-impeding mesh then filled it half way up with 8 bags of compost/pure soil mix. The depth of soil thus given to carrot growth was around 10 inches.

I bought one packet of carrot seeds and very carefully sowed the seeds as spaced-out as possible in rows about 8 inches apart.

Well, I can't tell you how successful this was. Our carrots have been stupendous! We had dozens and dozens of them, all ranging in size from 4 inches to our star performer - 8 inches!! Big, fat orange carrots with their wonderful fresh smell and taste. No need to peel them - just a thorough wash and straight into the steamer. They have kept us going for months.

I have to say that some of them were yellow and varying shades of pink through to bright orange, but they all tasted the same.

I can therefore thoroughly recommend installing a raised bed just for carrots.

Here's **Seeing** You!! (Lol - increased beta carotene!!)



## Bishop's Tachbrook Brownies

As I am sure a lot of readers are aware, BT Brownies is very popular and currently full to the brim with lovely girls who are thoroughly enjoying the Brownie experience.

Going forward, we will have to give priority to the girls of BT village and the section of Warwick Gates that comes under the Parish of BT and to any girl who attends BT School. This has become necessary as we are oversubscribed and can only realistically take a certain number due to the hall size and Brownie leaders.

We also need to know how many girls to expect and ask that if your daughter is in Reception or Year 1 and would like to be a Brownie when she is 7, please email [carolineloveday@sky.com](mailto:carolineloveday@sky.com) to register your interest in Brownies.

Even if your daughter is a Rainbow, you still need to put her name on the Brownie waiting list.





## PILATES

**Come and try your new local Pilates class run  
by a Chartered Physiotherapist.**



Bishop's Tachbrook Sports and Social Club  
Tuesday mornings, 9.30am.  
£7 per class

Benefits of Pilates include improved posture, flexibility,  
balance and co-ordination.

Treat yourself to an hour a week of looking after your body.

If you are new to Pilates and have any concerns about coping in a class then  
please call me for a chat. I can visit you for an individual assessment  
if necessary.

Helen Tudge MCSP Tel : 259293 mobile 07769222524  
email: [helen.tudge@gmail.com](mailto:helen.tudge@gmail.com) [www.helentudge.co.uk](http://www.helentudge.co.uk)

**BEAT THE NEW YEAR RESOLUTIONS RUSH BY JOINING NOW**

# REVIVAL

## Holistic Treatments by Kerry

Acre Close, Whitnash. Leamington Spa.  
**01926 427352 / 07890 444870**

**Aromatherapy** from £24.00

**Body Massage** from £20.00

**Hopi ear candles** £17.00 (Children), £22.00 (Adults)

**Indian Head Massage** £27.00

**Get Fresh Spa treatments** from £25.00

**Reflexology** £15.00 (Children), £27.00 (Adults)

**Gift Vouchers available**

**Free parking**

**Call for our latest offers and further information on any of the above treatments**



# Bishops Tachbrook Sports and Social Club



**Friday 5<sup>th</sup> December 5pm – 8pm**

If you're between 2 and 11, come and join us for our children's party this year.

Tickets are just £5 in advance from the bar at the club.

We'll have a disco, party games and food, and if the parents tell us their children have been good this year, 'ho ho hopefully' a guest appearance from a special someone bearing gifts...

**FUNCTION ROOM FOR HIRE** at very reasonable rates

Telephone: 01926 421621 or email: [enquiries@bishopstachbrookclub.co.uk](mailto:enquiries@bishopstachbrookclub.co.uk)

Call Karen Capehorn 07855 709051 for details.

Find us on Facebook (BishopsTachbrook SocialClub), Twitter (@BTSSClub) or visit [www.bishopstachbrookclub.co.uk](http://www.bishopstachbrookclub.co.uk)



Driving School

£22 per hour lesson

[www.csldrivingschool.co.uk](http://www.csldrivingschool.co.uk)

Tel: 01926 831713

mob: 07594810822

e: [p.hancock\\_adi@hotmail.co.uk](mailto:p.hancock_adi@hotmail.co.uk)

Local independent driving school run

by Peter Hancock

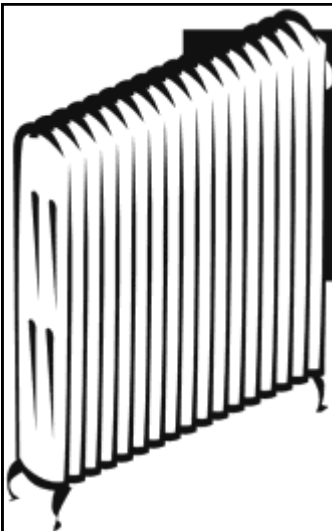


find us on Facebook

VISITING  
QUALIFIED  
CHIROPODIST

Mrs Lynn Hemmings  
MSSCH, MBCHA

01564 784466



**ANDY VEALL**  
**PLUMBING & HEATING**



213264

**TEL: 01926 315387**

Gas Fitting • Central Heating  
Plumbing • Bathrooms • Showers  
Landlord's Gas Safety  
Installation • Servicing • Repairs • Power Flushing





**One of the things I didn't know about WW1 was the number of troops from undivided India, current India, Pakistan and Bangladesh, who served in the war.**

Indian troops were on the Western Front by the winter of 1914 and fought at the first Battle of Ypres. By the end of 1915, they had sustained many casualties. Along with the casualties from sickness, the decision was taken to withdraw the Indian Corps from front line duty at the end of 1915.

In total, 800,000 Indian troops fought in all the theatres of the war with 1½ million volunteering to fight. They fought in most theatres of war including Gallipoli and North and East Africa. In all 47,746 were classed as killed or missing with 65,000 wounded.

The Indian Corps won 13,000 medals for gallantry including 12 Victoria Crosses. Khudadad Khan won the Corps first Victoria Cross.

Their rations really interested me. Here's a list of their rations in 1914:

¼ lb meat ; ⅛ lb potatoes; ⅓ oz tea;  
½ oz salt; 1 ½ lb atta (flour); 4 oz dhal;  
2 oz ghee (clarified butter); ⅓ oz chillies;  
⅓ oz turmeric; ⅓ oz ginger; ⅓ oz garlic  
1 oz gur

**I grow Garlic, chilies and potatoes but next year I'm trying Turmeric.**

## **Propagation**

**Select** plump, fresh turmeric roots that have a bud on at least one side.

**Scatter** a mixture of 50 per cent seed compost and 50 per cent grit on a seed tray.

**Apply** just enough to cover the tray.

**Position** your turmeric roots on the seed with

the bud facing up.

**Apply** just enough of the grit and seed-compost mixture to cover the turmeric rhizomes.

**Seal** the tray inside a plastic bag. Place it in a warm place -- at least 20 degrees C - for the next three weeks.

**Check** on the roots after three weeks. If they show no signs of sprouting, keep them sealed in the bag. When you notice small shoots growing, remove the bag.

**Dampen** the tray and place it in an area where it receives indirect sunlight. Add just enough water to keep it damp.

## **Planting and Maintenance**

**Wait** for the shoots to grow to about 2 inches high.

**Transfer** the roots to individual, shallow pots. Fill the pots about halfway with a non-peat based compost.

**Add** the roots, sprout side up, and cover them with more compost. Do not cover the sprouts.

**Water** your turmeric plants just enough to keep the soil slightly damp. During dormant months, reduce watering so that the soil is mostly dry.

**Mist** the leaves lightly with water every day in the growing season. This helps prevent pests, such as the red spider mite.

**Apply** an organic liquid fertiliser to each pot once a week during the growing season.

**If you need any advice on growing plants to spice up your life contact your happy Master Gardeners Susan Watt or I on:**

**suzwatt@gmail.com or 07711 498047**

**keithwellsted@btconnect.com 0771 8196577**

No job  
too small

Free  
Quotations

# Phil's Plumbing and Heating

**Fully Qualified**  
**and**  
**Insured Plumber**

Bathrooms, Central Heating & showers

I am a locally based plumber  
offering very competitive rates  
on any plumbing or heating job.

No job too small,  
Please give Phil a call

**Call Phil**

**Daytime: 07971 046392**

**Evening: 01926 400746**

**Email: philmunday@hotmail.co.uk**

**Bishops Tachbrook  
Leamington spa**

**It is gratifying when members offer to provide a talk, and we were looking forward to Jeannette Oubridge's offering.** Unfortunately, the computer

refused to project the images of the

'Re-birth of Warwick's Priory', so her research will now be presented at our AGM on 10<sup>th</sup> February. Eddie Cousins gave the second talk in our November programme –

## **'Excavation in the Garden of Shakespeare's House'.**

Eddie first set the scene of this period of the mid-16<sup>th</sup> century, when post-Reformation England developed into "The Golden Age" of Elizabeth 1's reign. In fact very little detail is known about the life of Shakespeare. Even Bill Bryson, the prolific travel writer and researcher, who had the temerity to publish "A Short History of Nearly Everything", was daunted when asked to write the life of Shakespeare. Eddie took on the challenge and talked about Shakespeare's background: his schooling at King's New School, Stratford, and some events in Shakespeare's life – or were they myths that developed over time? Did he really go poaching in Sir Thomas Lucy's Charlecote Park? He certainly poked fun of him in a couple of plays. Was he involved with Sir Robert Devereaux, Earl of Essex, in a plot against Elizabeth 1? Where was Shakespeare during 1585-92? Travelling in Italy maybe?

Eddie's interest in Tudor history was

rewarded when, as an amateur, he was accepted by Shakespeare Birthplace Trust and Birmingham University to join archaeologists in excavating the foundations of 'New Place' during 2010/11.



(Left: sketch by George Vertue 1737). Shakespeare, a rich man by 1597, had bought the 50-year old second-largest private house in Stratford for £60; it had been built by the Lord Mayor of

London as a holiday home and its immense grounds stretched almost to the river. Shakespeare died 19 years later, his popularity declined and the property was radically altered or rebuilt in 1702. 'New Place' was eventually purchased by Rev Francis Gastrell as a country retreat, but his peace was shattered following a surge in Shakespeare's popularity and the growth of the tourist industry to Stratford. By the mid-1700's the Reverend grew weary of the noisy intrusion of tourists and theft of branches of a mulberry tree allegedly planted by Shakespeare. He removed the tree and demolished the house in 1759 following conflict with Stratford District Council over payment of tax on his holiday home.

Excavations were carried out on the site in 1891 by James Orchard Halliwell Phillips, a dazzling prodigy whose interest lay more in possession of artefacts which came to light than recording archaeological discoveries. When he died his personal papers included 3600 pages torn from 800 early printed books!

**Continued on page 17**

# Complete FLOORING

**Carpets**

**Vinyls**

**Wood**

- \* Supplied and fitted
- \* Sample swatches
- \* Free quotes
- \* Re-stretches/adaptions

(Will fit customers own Materials)

**Call Dylan 07866 638674 / 01926 315116**

**Email: [complete.flooring@btinternet.com](mailto:complete.flooring@btinternet.com)**

**[www.completeflooringwhitnash.co.uk](http://www.completeflooringwhitnash.co.uk)**

## **TOM RODGERS TREE SERVICES**

**Prompt Professional Tree Care  
Established Local Tree Surgeons With Reputation  
for Quality Work at Competitive Prices.**

- £5 Million Public Liability Insurance
- All Aspects of Tree and Hedge Work
- Stump grinding
- Domestic & Commercial
- Local Authority Approved
- 24 Hour Call Out
- Dangerous Trees Removal
- Member of Arboriculture Association

**FREE**  
QUOTATIONS  
AND ADVICE

**01926 810716**

**07958 794180**

**[www.tomrodgers.co.uk](http://www.tomrodgers.co.uk)**

Church End, Manor Road, Stockton CV47 8JF





In 2010/11 excavations from various trenches revealed foundations of buildings from late 15<sup>th</sup> century and 1702, various pits dating from 14-19<sup>th</sup> centuries and tantalising evidence of renovations during Shakespeare's residence. Very unusual for a site of this size and location, evidence of development over 2000 years has been identified, including Iron Age and 13<sup>th</sup> century pottery.

Further excavation of the area, known to have been Shakespeare's house, was halted in 2012 by Stratford District Council because it involved removal of a mulberry tree planted in 1946! How very frustrating for the team of enthusiastic volunteers like Eddie.

#### **Future Meetings**

**Tuesday, 9<sup>th</sup> December**  
**Festive lunch at the Leopard**

**Tuesday, 10<sup>th</sup> February**  
**at 2.30 in St Chad's Church**

***AGM followed by***  
***Jeannette's Oubridge talk on***  
***the Re-Birth of Warwick's***  
***Priory (hopefully with slides!)***

#### **Bishops Tachbrook Junior Youth Club**

Monday 6.30-8pm in the School Hall  
During Term Time Only  
£1.50 per session and yearly  
membership of £2 payable  
in September.

For more information  
contact Anoushka on 311538 or  
anoushka76@hotmail.com  
or come along on a Monday.

## **Bishops Tachbrook Cycle of Prayer Praying for our Community**

I have agreed to write the Prayer Calendar each month. If there are any particular concerns you would like us to include, or you feel I have left out something important, please let me know. I am John Pratt and can be contacted at

[j.a.pratt@btinternet.com](mailto:j.a.pratt@btinternet.com)

**A prayerful way of getting  
ready for Christmas.**

Do you find the run up to Christmas a time of panic and rush, buying, wrapping, posting presents and worrying in case you have forgotten anything? Put a stable in your home! As in previous years, the church's models of Mary, Joseph and the donkey will be travelling through Advent until the Crib Service on Christmas Eve. There will be a chart in church where you can sign up to welcome them for a night in your home; and to give details for smooth handovers (your names, address, telephone number). Do think where in your home will be the best place for them: the heart of your family life. With them will be a card containing a special prayer - probably best used when as many as possible of your family are all together.

This month we pray for those who live in: Touchstone Road Trinculo Grove Vicarage Rise Wychwood Close

## Patient Participation Group

The Thursday 13<sup>th</sup> November meeting (12.30pm) was poorly attended but the discussions were lively and positive. The lack of a minute secretary has been a problem for some time and a volunteer would be greatly appreciated. The group is also keen to enrol the support of young members of the community – is there anyone out there who could attend and participate in the discussions on enhancing the surgery services to their age group? It looks good on a CV!

It was noted that last week 40 patients of the practice had made appointments but had not turned up. They now receive letters asking for an explanation.

Croft rates 3<sup>rd</sup> in the area for most unnecessary use of A & E: ie patients who attend the hospital Accident and Emergency Dept, whereas they should have accessed the emergency 111 service. The Practice is introducing a follow-up call/letter to these patients to encourage them to use the emergency phone 111 service at weekends.

Communication with patients is important – we looked at features such as screens in the waiting rooms, newsletters, posters, flyers and branching out to Twitter and Facebook (help from young patients would be very helpful here). Agreed to form a sub-group to look at the whole topic of communication. Someone from the village is also needed to keep the PPG notice board up-to-date and tidy.

A Hope Programme is being introduced in the area to help patients with dementia and their carers.

The on-line site [www.iwantgreatcare.org](http://www.iwantgreatcare.org) collects comments from patients on their experience with Croft – good or bad. These comments encourage the staff and help to formulate future policies and improve services. Please co-operate.

There had been some compliments and no complaints during the last month.

A survey of patients having a blood-test during the week of 1 December will help the Practice to identify how their system is working.

Patients wishing to participate in the on-line prescription service (over the counter medication), must register in the new system by 1<sup>st</sup> January. This does not apply to village patients as we have the undoubted benefit of a surgery pharmacy (to the envy of Sydenham patients!)

The Practice is confident that it can cope with the village housing development programme without extending the current premises. Fuller use can be made of the existing premises.

**Next Meeting – Tuesday, 16<sup>th</sup> December, 6.30pm at Croft Surgery, Sydenham.**

*Please phone beforehand to confirm the date. Anne Kirby (01926 336749)*

We're sorry to report that for family reasons Rob Loveday has had to resign from the Parish Council. Rob has contributed to our community for many years as a councillor, notably on the upkeep of the Meadow and its play areas; and we thank him on your behalf for his efforts.

Leigh Carter, who many of you may know as the Community Speedwatch Co-ordinator, has agreed to be coopted onto the Council. Leigh's gathering and thorough analysis of speedwatch data has helped us understand how we might tackle traffic speeds in the village and surrounding roads. Most recently his presentation succeeded in gaining a grant from the Community Forum to install an additional VAS sign on Oakley Wood Road. We welcome Leigh to serve on the Council.

Following the **Public Inquiry** in September, the Inspector has dismissed Barwoods appeal against WDCs decision to refuse planning permission for 125 houses on land at the back of Holt Avenue. We must thank Councillor Ray Bullen for his hard work, preparing the Statement of Case and marshalling the evidence and documents for our Counsel to use. He attended the 4 day Public Inquiry and then was himself subjected to cross examination by Barwood's Counsel. This is a very significant success because the points made in the Inspector's report will help us resist similar appeals for more housing at Seven Acre Close (Lloyds) and for a huge estate at the Asps (Barwoods).

Because Public Inquiries require legal counsel the costs are high; it is an unfair aspect of the planning system. But if we want to resist such developments then we incur these costs. In this case after careful thought your Parish Council decided we should be represented at the Inquiry. The cost was £11500, but this has been reduced by contributions from local community groups working together under the Warwick Deserves Better banner. Thanks to their generosity, all coming from voluntary donations, our net cost will be £7k.

The **Winter gritting plan** has been received from the County Council. No change from last year. Please go to the WCC website [www.warwickshire.gov.uk/gritting](http://www.warwickshire.gov.uk/gritting) or the parish website for more details.

Councillors were very disappointed to learn that the District Council decided to do a 'U turn' on the **new boundaries** and exclude Woodside Farm from the Parish. We are writing to the Boundary Commission complaining and will keep you updated.

**Mallory Road Safe Crossing Meeting** will hopefully take place in January. Residents who have expressed an interest in attending will be advised of the date.

The **Gypsies and Travellers Preferred Option Consultation** land at Stratford Road, Warwick has started and will finish on 12<sup>th</sup> December. This site will provide nearly half of the pitches the district needs to provide. For residents who wish to comment on this proposal, details are available on the District Council website [www.warwickdc.gov.uk](http://www.warwickdc.gov.uk). Select *Planning* and then the link to *New Local Plan*. You can also find out how to respond here.

The **Neighbourhood Plan** is moving forward. Final submission of the plan is currently being written taking into account the comments made during the recent public consultation.

The School and the History Group have been active in coming up with ideas for **names for our new streets**. We will keep you updated on this.

The **Christmas tree** will be on the green again this year - hoisting day 13<sup>th</sup> December. Thanks in advance to Alan, Piers and allies.

**Parish Council news continued on page 24**



## Christmas Crossword



### ACROSS

1. Pumpkin or mincemeat
3. Santa's ride
6. Celebration
8. Newborn
9. Northpole crew
13. Word of praise
14. Words on a Christmas card
17. It's opened on Christmas

### DOWN

1. Alternative word to 17 across
2. Christmas drink
4. Christmas dinner centerpiece
5. Dec. holiday
7. Christmas warmer
8. "Jingle \_\_\_\_"
10. Christmas tree
11. O. Henry's "The Gift of the \_\_\_\_"
12. What carolers do
15. French Christmas.
16. Snow glider

Crossword solutions on page 42





1. Example: 24 Hours in a Day
2. 7 Y of B L (I Y B a M)
3. 26 L of the A
4. 6 S on a G
5. 7 W of the W
6. 12 S of the Z
7. 29 D in F in a L Y
8. 52 C in a P (WJs)
9. 3 W M
10. 18 H on a G C
11. 13 L in a B D
12. 21 D on a D
13. 90 D in a R A
14. 6 W of H the E
15. 15 P in a R T



16. 4 S in a Y
17. 32 T (I W T)
18. S R
19. 57 H V
20. 64 S on a C B
21. 12 D of C
22. 5 T on a F
23. 4 H of the A
24. 23 P of C in the H B
25. 8 N on a M S
26. 30 D H S A J and N
27. 15 M on a D M C
28. 20 N on a D B
29. 14 D in a F
30. 2 T D (and a P in a P T)



1. 24 Hours in a Day
2. 7 Years of Bad Luck (If You Break a Mirror)
3. 26 Letters of the Alphabet
4. 6 Strings on a Guitar
5. 7 Wonders of the World
6. 12 Signs of the Zodiac
7. 29 Days in February in a Leap Year
8. 52 Cards in a Pack (Without Joker)
9. 3 Wise Men
10. 18 Holes on a Golf Course
11. 13 Loaves in a Bakers Dozen
12. 21 Dots on a Die
13. 90 Degrees in a Right Angle
14. 6 Wives of Henry the Eighth
15. 15 Players in a Rugby Team

16. 4 Seasons in a Year
17. 32 Teeth Including Wisdom Teeth
18. 8 Santa's Reindeer
19. 57 Heinz Varieties
20. 64 Squares on a Chess Board
21. 12 Days of Christmas
22. 5 Toes on a Foot
23. 4 Horsemen of the Apocalypse
24. 23 Pairs of Chromosomes in the Human Body
25. 8 Notes on a Musical Scale
26. 30 Days Hath September April June and November
27. 15 Men on a Dead Man's Chest
28. 20 Numbers on a Dart Board
29. 14 Days in a Fortnight
30. 2 Turtle Doves (and a Partridge in a Pear Tree)

## Bishop's Tachbrook Calendar

### December 2014

Date	Organisation	Event	Venue	Time	Contact
1 Mon	Mothers' Union	Diocesan Advent Carol Service	Holy Trinity Stratford	11am	01926 427922
2 Tues	Mothers' Union	Meeting	81 Kingsley Road	2pm	01926 427922
4 Th	WI	Christmas Party	B.T. School	7.30 pm	01926 424135
6 Sat	Over 50's Club	Outing & Xmas meal	Sports & Social Club	All day	01926 313020
12 Fri	Sports and Social Club	Kids Christmas Party	Sports and Social Club	5-8pm	01926 421621
14 Su	St Chad's Church	Carols and switching on tree lights	Village Green	6pm	Elaine Scrivens
16 Tues	Mothers' Union	Deanery Carol Service	St Margaret's Whitnash	2pm	01926 427922
16 Tues	Over 50's Club	Flower Arranging	Sports & Social Club	2-4pm	01926 313020
16 Tues	Croft PPG	Meeting	Croft Medical Centre Sydenham	6.30 pm	01926 336749
19 Fri	The Leopard	Carols	The Leopard	6.30 pm	
21 Sun	St Chad's Church	Carols by Candlelight	St Chad's Church	6pm	Elaine Scrivens
24 Wed	St Chad's Church	Crib Service	St Chad's Church	4pm	Elaine Scrivens
24 Wed	St Chad's Church	Midnight Mass	St Chad's Church	11.30 pm	Elaine Scrivens
25 Thurs	St Chad's Church	Family Communion	St Chad's Church	10am	Elaine Scrivens

## January 2015

6 Tues		Pilates	Sports and Social Club	9.30am	07769222524
7 Wed	WI	Meal	The Leopard	7pm	01926 424135
8 Thur	Country Dancing Club		Sports and Social Club	8pm	01926 314286
10 Sat	In aid of Air Ambulance	Coffee Morning	7 Bishop's Close	10am-12	01926 428146
13 Tues		Pilates	Sports and Social Club	9.30am	07769222524
15 Thurs	Parish Council	Meeting	BT School	7.30pm	01926 641220
20 Tues		Pilates	Sports and Social Club	9.30am	07769222524
27 Tues		Pilates	Sports and Social Club	9.30am	07769222524

## Weekly events

Mondays	Rainbows		Sports and Social Club	6.00-7.30	Jadechoc@aol.com
Mondays	Youth Club		B. T. School	6.30-8.00	Anoushka76@hotmail.com
Tuesdays		Pilates	Sports and Social Club	9.30am	07769222524
Tuesdays	S & S Club	Bingo	Sports and Social Club	8.00	01926 421621
Wednesdays	Brownies		Sports and Social Club	6.00-7.30	carolineloveday@sky.com
Sundays	S & S Club	Bingo	Sports and Social Club	8.00	01926 421621

If you have any items you'd like included in the February calendar please email Marion Smith on [marismi913@aol.com](mailto:marismi913@aol.com) by Wednesday 8th January with the following information about your event:

Date – Time – Organisation – Event – Venue - Contact name and number

Thank you.

## Parish Council News continued

The parish councils of Harbury and Bishop's Itchington, having received a number of complaints about the safety of the **Harbury Lane/Fosse Way junction**, have resolved to join forces in an effort to force WCC Highways to carry out improvements to this very busy junction. An online petition has been set up on WCC's website and we want as many people as possible to sign it please. We already have nearly a thousand signatures which means that we will be able to present the petition to the council for its consideration. Please click on the following link to add your name. It is simple and only takes a few seconds to do. <https://democratic.warwickshire.gov.uk/cm15/Petitions/tabid/90/ID/59/Harbury-Lane-Fosse-Way-x-roads.aspx>

We are also in the process of writing to WCC and requesting a high level meeting with senior officers to discuss the problems and the possible improvements which could be made. There are almost weekly accidents at this junction some of which have been serious while many others are not being recorded. Anyone who approaches this junction during peak hours must do so with extreme care whether or not you approach along the Fosse Way, which has priority, or are trying to cross over from Harbury Lane. The junction is staggered and drivers are sometimes unclear as to who has priority. It is impossible to cross over Fosse Way without taking any risk. It is truly frightening in peak hours.

There are plans for thousands of houses in Warwick and Leamington, plus several hundred in and around Southam, a new settlement of 3,000 homes at Gaydon/Lighthorne Heath and a gypsies and travellers site at Leamington Spa FC ground just a few yards from the junction. We believe that improvements to the safety of this junction are needed urgently before these new homes are built. Please sign the petition and if you can, please also write to Graeme Fitton at WCC outlining your concerns.

Lastly, thanks to the Village Events Group for yet another great **fireworks display and bonfire night**. Let's hope they agree to organise another one next year. Parish funds were used to reimburse the Pay-Back team to clear away the bonfire site and relay the turf (since the reorganisation of the Probation Service we are charged for this work!).

**The Parish Council wishes everyone a Merry Christmas and a Happy New Year.**

**Next meeting 11<sup>th</sup> December, 2014 at 7.30pm in the School.**

### **PLAY AREA INSPECTOR WANTED**

Richard Morton has been inspecting and maintaining the play equipment on the Meadow for many years. But he's retiring at Christmas, so the Parish Council is now seeking his successor.

The task involves checking once a month the condition and safety of both the junior and toddler play areas. The results are then emailed to the clerk on a simple report form. The fee is currently £20.

The successful candidate may also carry out simple repairs as required, for which an additional fee will be agreed with Clerk. Training will be provided.

This is a pleasant outdoor task and has the satisfaction of directly helping youngsters in our community.

***If you're interested contact Corinne Hill on 01926 641220 or  
parishclerk85@btinternet.com***

## Village Events Group

**Thankfully although the day was very wet, the evening of the Bonfire Event was dry!!**

As usual there are a few special thank yous. A big thank you to all of the fire building crew, who braved the weather to get all of the donated wood onto the fire, especially Mr Gandy whose tractor was invaluable. Thanks also to everyone who helped out in the evening, Adrian at Linleigh Electrical, TCL for the loan of the turf cutter, Karen and the Sports & Social Club, the Parish Council for arranging the Sunday clear up and everyone who supported the event by buying draw tickets, putting money in our buckets and for just coming along on the evening and making it a success. Lastly a massive thanks to Anthony Bermingham Building and Carpentry for sponsoring the event.

If anyone is happy to share some of their pictures with us, please e-mail them to [cathy.herbert@btinternet.com](mailto:cathy.herbert@btinternet.com).

We hope to recruit some more volunteers to help out with the event in 2015 as without this help the event may not be able to continue, but hopefully next year's Bonfire night will be held on The Meadow on 6<sup>th</sup> November 2015. Cathy, Martin and Tony

Winners of the Draw were:

£100 First prize

Breakfast Hamper

Sweet Hamper (incl. donations from Tachbrook Stores)

Wine

Vodka (donated by the Sports & Social Club)

Champagne (donated by Elaine)

Bells Whiskey (donated by the Social Club)

D. Farrant

Mrs Johnson

Carol

D. Arthur

S. Hawkins

C. Elwell

G. Cox



**Helping Hands**  
Est. 1989

**Do you need a helping Hand?**

THE NATIONAL DEMENTIA CARE AWARDS

UKICA

Great British Care Award 2010 Winner

Our **Bishops Tachbrook** care team has been providing award winning quality homecare since 1989. We offer you home care that enables you or your loved one to remain at home with compassion and dignity by assisting with:

Personal care, housekeeping, companionship or providing a break for an existing family member or care-giver.

So if you are looking for an alternative to residential care or just support for you or a loved one, then we're here to help - from 30 minutes to 24 hours per day, 7 days per week.

To find out how we can help, call  
**0808 180 1033**  
or visit [www.helpinghands.co.uk](http://www.helpinghands.co.uk)

## DID YOU KNOW THERE WAS A BEAUTY SALON IN THE VILLAGE?



Julie is based at her Home Salon in Parsonage Close, and has over 20 years experience in the Beauty Industry, specialising in:

- SKIN ANALYSIS EVENTS by the INTERNATIONAL INSTITUTE of ANTI-AGING • COLLAGEN STIMULATION THERAPY •
- ENVIRON ANTI-AGING FACIALS • CHEMICAL EXFOLIATION FACIALS • NON-SURGICAL FACELIFTS • ELECTROLYSIS •
- COSMETIC INJECTIONS – FILLERS AND MUSCLE RELAXANTS • INTENSE PULSE LIGHT (IPL) for PERMANENT HAIR REDUCTION • RELAXATION FACIALS • HOT LAVA SHELL MASSAGE • PEDICURES • SOAK-OFF GEL POLISH MANICURES (that last for weeks) • WAXING • TINTING • PAMPER PACKAGES • MAKE-UP PARTIES • PRINCESS PARTIES •

Prices and Special Offers at [www.beautyondemand.net](http://www.beautyondemand.net) or call Julie on 07770 881895



## SYCAMORE CARPENTRY & MAINTENANCE



Interior & Exterior Painting  
All work around the Home & Garden  
Door Hanging  
Shelving

Laminate & Wood Flooring  
Kitchen Fitting & Worktops  
Fencing, Gates etc.



Contact Kev Harris  
Tel 01926 774795 Mobile 07769 551318



### **Thank you, thank you, thank you!**

A big thank you to all who supported our Autumn Coffee Morning on 15th November by either glueing and sticking, making or baking in advance, serving on stalls, making coffee or buying the goodies on the day, you were all tremendous. We have raised £413.61 to date and I know that we will sell a few more jars of piccalilli, chutney, marmalade and jam at church to raise the total even higher. Kath Reason has been very busy making Christmas cards and birthday and special occasion cards for us to sell and approx £115 of the above total is from her sales for the Angel Tree Project. We have been asked to provide gifts for two prisoners' children this year. The rest of the money raised will go to other Mothers' Union projects: possibly the Away From It All holidays; the production of our baptism cards and wooden spoons for couples who marry at St Chad's; Literacy and Parenting projects etc.

In December our members will join hundreds of others from branches across Coventry diocese when we gather at Holy Trinity church, Stratford, with our banners for an Advent Carol Service on Monday 1st Dec at 11 am. As usual, we will make it an excuse to have a meal together afterwards. This will replace our usual December Branch meeting that week. Also, on December 16th we are going to St Margaret's Whitnash for a Deanery Mothers' Union Carol Service at 2 pm. This will include members from Whitnash, Harbury and Southam and anyone else who would like to come along.

In January, at a date to be confirmed, there will be a Christmas gathering of our members to discuss future plans – and of course enjoy some seasonal food and drink!

A Happy Christmas to you all. Jenny Lister Tel. 427922

### **Merry Christmas and Happy New Year ...**

**...to all those who contribute to the magazine.** Thank you for taking the time to put your items together each month and for keeping everyone informed and entertained! It's thanks to you and your efforts that the magazine is such a valued part of our community.

**...to the fantastic team of distributors.** Thank you for working so quickly and efficiently every month to ensure the magazine is delivered to all homes on time.

**... to all those who advertise in the magazine.** Thanks all of you for your support of the magazine and we hope your businesses prosper in 2015.

**...and to everyone who reads the magazine.** We hope you continue to enjoy the magazine in 2015. Please get in touch if you have any new ideas for features or would like to get involved.

**With very best wishes to you all at Christmas. Parish Magazine Committee**



**THE CARE BUREAU**

**"Care for People....  
....People For Care"™**

## ***Home Care Assistants Wanted***

- *Part Time and Full Time positions available*
- *No Experience necessary*
- *Full Paid Training Provided*
- *Own transport preferred*
- *Free CRB and Uniform*

## ***Nurses Agency***

- *Nurses / Health Care Assistants*
- *Live in Care Workers*
- *Experience essential*

*For more information or an application pack*

**call 01789 520 990**

**email: [hr@carebureau.co.uk](mailto:hr@carebureau.co.uk)**

**[www.carebureau.co.uk](http://www.carebureau.co.uk)**



# Bishops Tachbrook Sports and Social Club

## Winter Entertainment

### December

#### 5<sup>th</sup> December – Kids Christmas Party and Disco

We've arranged for Santa to come and visit us between 5 and 8pm. With food, party games and a gift too. As Santa is busy it's a ticket only party, available from the bar in advance for children up to age 11

#### 6<sup>th</sup> December – Christmas Quiz

A Christmas quiz with a difference, every team wins a prize! Come and pit your wits against Mrs. Christmas. Cash Rollover could be over £200

#### 13<sup>th</sup> December – Bottle Bingo

If you like bingo then you'll love this opportunity to win a bottle in this bingo with a twist.

#### 20<sup>th</sup> December – Steve Ray

Back by popular demand after his last excellent performance. Solo singing hits from the 60's, 70's and 80's

#### 24<sup>th</sup> December – Christmas Party with The Jay Kays

Come down and relax on Christmas Eve with us and The Jay Kays. Playing hits from the 50's, 60's and 70's.

#### 31<sup>st</sup> December – New Years Eve with The Breaks

What better way to see in the New Year than with The Breaks. They'll be playing hits from the 60's through to today. We'll have a buffet and of course a great atmosphere as well.

### January

#### 10<sup>th</sup> January – The Score

One of the hottest young band around the Midlands, new to the club, playing music for all ages

#### 17<sup>th</sup> January – Karaoke with Paul and Rachel

Building on the success of our last Karaoke nights, Paul and Rachel are back to host another evening

#### 24<sup>th</sup> January – Karly

An amazing solo vocalist. Singing songs from all decades.

#### 31<sup>st</sup> January – Members Night with The Buggs

A perfect opportunity to put the post Christmas blues behind you. A firm club favourite. The Buggs are a chart topping band who have sung with Alvin Stardust, The Apple Jacks and Vanity Fair.

On top of that we will have the usual drinks offers. £2.50 per pint and 20% off spirits. There will also be a free buffet.

So come down and get to know to know your fellow members and join us for our always popular members night

#### Children's Christmas Party – 5<sup>th</sup> December. 5pm – 8pm

If you have a child or children aged between 2 and 11 then you'll want to come to our Christmas Party. You'll get party games, food, a disco and a personalised gift. Make sure you get your ticket early as numbers will be limited.

#### **DON'T FORGET THAT ALL CHILDREN ARE WELCOME, COME AND HAVE A GREAT NIGHT OUT**

We have a newly decorated family room with jukebox, TV, pool and darts, 2 full sized tables in the snooker room plus our spacious members lounge, which also has a big screen for sports.  
Entertainment starts at 8.30pm. Bingo every Sunday and Tuesday at 8pm

**FUNCTION ROOM FOR HIRE** at very reasonable rates

Telephone: 01926 421621 or email: [enquiries@bishopstachbrookclub.co.uk](mailto:enquiries@bishopstachbrookclub.co.uk)

Call Karen Capehorn 07855 709051 for details.

Find us on Facebook (BishopsTachbrook SocialClub), Twitter (@BTSSClub) or visit [www.bishopstachbrookclub.co.uk](http://www.bishopstachbrookclub.co.uk)

# Notice Board

## **Honiley Dogs Trust and Avon Cat Rescue**

We are asking people to please help the dogs and cats at the above rescue centres again this Christmas. They urgently need food to help them through the winter. Please could you give tins, packets, sachets or dried food and biscuits, also some treats would be nice. Any dog or cat beds, blankets, towels to keep them warm and dry, and any balls or toys to play with. Any of the above would be gratefully received by Jackie at 41 Mallory Road or Lynda at 29 Holt Avenue. Thank you.

## **News from St Chads**

We have had two special services this Autumn. The first one was our Harvest service at the beginning of October and the second was of course for Remembrance Day on 9<sup>th</sup> November. I thought that you would like to know that the collection from the Harvest Service (plus the raffle at the Harvest Supper) came to £250.00 which was sent to Farm Community Action. The Remembrance Day collection was £140.00 and this was sent to the Royal British Legion. Many thanks to all members of the community who attended these services and helped by giving. Vera Leeke

## **WI Coffee Morning**

In aid of Air Ambulance  
Saturday 10th January  
10am-12noon  
7 Bishops Close

## **Country Dancing Club**

2nd Thursday of  
every month 8pm at  
Sports and Social Club

Next deadline for magazine items is 15th January for the February issue. Please send to [catherine.keen@btinternet.com](mailto:catherine.keen@btinternet.com)

**Special Christmas wishes and a big thank you to everyone who has contributed to the magazine fund-raising so far.** Your support is greatly appreciated.

If you haven't already done so, it's not too late to drop your magazine fund-raising envelope off at any of the following addresses:

The Vicarage, 15 Argyle Way, 11 Vicarage Rise, 3 Hassell Close, 1 Launce Grove Warwick Gates, 5 Birch Court Heathcote Park or the bucket at St Chad's Church.

### **Bishop's Tachbrook - Past and Present**

A few copies of the village history book remain at £9 apiece - contact Anne Kirby on 336749. The DVD, "TACHBROOK TIMES" is fun and at £5 also makes a neat Christmas present.

We will be ordering a reprint of the book in the New Year, and expect the new price to be £10.

### **A Message from Pickle**

Dear people of Bishop's Tachbrook

This is a plea from one of the dogs of the village. I am sure me and most of my friends are only just getting back to normal after a whole week of fireworks. I thought November 5th was the great day with an extra day for the village display. I spent the whole week se-dated because I am terrified of the bangs and whizzes.

When you buy your fireworks please give a thought to all the animals, bigger is not always better. It just makes some of us ill.

Thank you love Pickle

### **Royal British Legion Poppy Appeal**

Once again it is time for me to express the gratitude of the Royal British Legion and its beneficiaries for the generosity of the people of Bishop's Tachbrook in their support for this year's Poppy Appeal.

Special thanks to the staff and pupils of the village school who raised an incredible £1800 in addition to sale of poppies.

You may be assured that all monies collected during Remembrancetide will be used to provide aid and comfort in many forms to ex servicemen and women and their families who are in need.

Once again thank you all. Harry Upstone

### **School Christmas Fayre**

29th November

4pm-6pm

All welcome.

### **Team Leopard**

We are delighted to let you know that the final total raised for Myton Hospice is £2790. A big thank you to all who helped and supported us. Eddie Cousins

### **Tree Planting**

As part of its on-going programme to keep the parish looking green and attractive, your PC is combining with Warwick Tree Wardens to fund and plant 5 trees this autumn. Some locations are already designated, but if you would like a tree on the verge outside your house please contact the Clerk at [parishclerk85@btinternet.com](mailto:parishclerk85@btinternet.com). A key part of the deal is that residents must agree to watering the young trees regularly in their first 2 years.



# LOCKE & ENGLAND

AUCTIONEERS & VALUERS

Established 1834

## Auction Every Thursday

If you are thinking of moving, downsizing or clearing a property or business.

Call for a free no obligation collection quote on 01926 889 100 or email [valuers@leauction.co.uk](mailto:valuers@leauction.co.uk)

ENTRIES FOR OUR WEEKLY SALES CAN INCLUDE:

Antique & Modern Furniture • Clocks • Books  
Ceramics & Glassware • Pictures & Prints • Bicycles  
Jewellery & Watches • Garage Tools & Equipment  
Household Electrical Items • Timber & Building Materials  
Office Furniture & Equipment • Retail Products & Stock  
Horticultural & Commercial Equipment • Vehicles  
Garden Furniture & Effects • Collectables

## COLLECTION SERVICE AVAILABLE

The Auction Centre 12 Guy Street, Leamington Spa, CV32 4RT

01926 889 100 [www.leauction.co.uk](http://www.leauction.co.uk)



Complementary therapies  
with a more holistic, spiritual approach

- \* Reiki
- \* Facials
- \* Reflexology
- \* Aromatherapy
- \* Crystal Therapy
- \* Hopi Ear Candles
- \* Indian Head Massage
- \* Emotional Freedom Techniques (EFT)

Tel: 01926 741255

Email: [louise@heathcoteholistics.co.uk](mailto:louise@heathcoteholistics.co.uk)

Web: [www.heathcoteholistics.co.uk](http://www.heathcoteholistics.co.uk)

THE NHS DIRECTORY  
OF COMPLEMENTARY AND ALTERNATIVE PRACTITIONERS



103 Heathcote Road, Whitnash CV31 2LX

## C PULLIN AND SON

### Monumental Masons

Five generations  
of Quality Manufacturing  
and Service  
All Aspects of  
Monumental Masonry



Showroom at: 19A High Street  
Leamington Spa CV31 3AW  
Telephone: 01926 426435  
[www.pullinsmemorials.co.uk](http://www.pullinsmemorials.co.uk)



**We have had a long slow Autumn with mild weather.** I wonder what Winter will bring - more rain perhaps! It is amazing to look around in November and see so many plants still flowering when normally they would have died back. Butterflies were about right until the end of October, and in the first week of October I spotted a lovely fat Bumble Bee taking advantage of the late flowering pot plants in a friend's garden.



If you have walked through the churchyard from the Green recently you may have noticed the mushrooms growing near the tower. I have been trying to identify them and have at least narrowed it down to two possible candidates. The first is Sulphur Tuft and the second Conifer Tuft. An interesting website <http://www.mushroomdiary.co.uk> tells me that the first is inedible, and likely to make one feel very sick, while the second makes good soup! It does go on to advise anyone not to eat any fungi unless absolutely sure it has been identified correctly. The specimens in the churchyard are no longer at their best but perhaps someone out there can identify them.

I was looking out of the kitchen window as I was getting breakfast one morning, when I saw a Goldfinch on the nut feeder. I was surprised as Goldfinches are not so common and they are usually fussy eaters. I know they love nyjer seeds but I rarely put those out. They are also one of

the birds that prefers to visit the same feeders and so will always go where they will find their favourite food. They like sunflower hearts as well so it was not a complete surprise but it does seem to go against 'received wisdom'. I did not think I would be getting any birds other than my usual Sparrows, Dunnocks, a Blackbird or two, a Robin and probably a few Starlings as well as seeing the little brown flash of a tiny Wren.

I had not kept feeding the birds during the summer and this goes against all advice for attracting birds during the rest of the year. Well, not only has

the Goldfinch visited once but it has returned most days and feeds for quite a long time. There have also been regular visits from Bluetits and a Great Tit. I have to watch carefully to be sure which it is as they are so quick, flying in, snatching a morsel and back to the safety of a tree or bush. Why are they so wary? Is it the cat that appears that frightens them or has the Sparrowhawk been about? I have watched Bluetits in a friend's garden spending several minutes on nut feeders. Is the behaviour different because it is learnt or because of the local situation? Birds are clever, they do learn new behaviours. The Robin also visits the nut feeder. It can't grip the small perch as the Sparrows do but with much flapping it manages to grip long enough for a beakful. Even the Starlings are learning to hang on even if they look a bit comical.



## Lizzy Pickles Catering

### Your Local Caterer

For All Occasions  
Business Lunches  
Parties  
Weddings  
Christenings  
Funerals  
Buffets  
Training Sessions

Home of the Lizzy Pickles  
Sausage Roll

Most Items Homemade

Menus Tailored To Suit  
Your Needs

Lunches and Buffets from  
£3.95/head

Established over 10 years

To Discuss Your Catering Requirements call:

*Lizzy Pickles*

Tel: 01926 422438

Mob: 07917 036757

email: [lizzy.pickles@tiscali.co.uk](mailto:lizzy.pickles@tiscali.co.uk)  
Kingsley Rd, Bishops Tachbrook

# Moving home?

## Need some extra space?

Safe, secure storage for domestic and commercial uses

Flexible  
storage  
options

Discounted  
moving  
services

Van  
rental

Flexible  
opening  
hours

Daily  
storage  
rates

**Packing Materials Available\***



**Harbury Lane, Leamington Spa, CV33 9QB**

**Tel 01926 882282**

**[www.squabstorage.co.uk](http://www.squabstorage.co.uk)**

\*Free delivery to local area



## Steve Harvey's Nature Page

**Over the fields skylarks sang as the warm air was drawn up from France.** November and the ivy is covered with myriad flower clusters playing host to honey bees, bumbles, flies, wasps and a Red Admiral, all enjoying the last nectar banquet of the year.

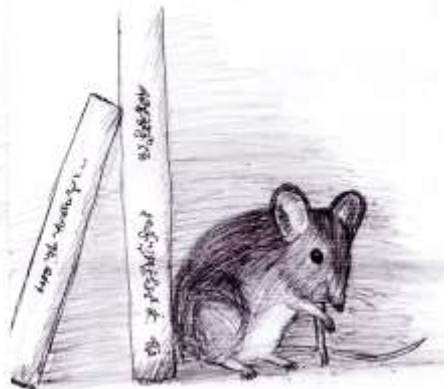
By the end of September Redwings are usually arriving from Scandinavia. This year I didn't hear their "Seep. Seep" calls until the end of October. Fieldfares travel with them but I didn't hear their "Chuckling" calls until early November. The Summer must have been extended over there like ours, so I guess they delayed their flights.

Always nice to have the Blackbirds return to the garden. After nesting they always disappear to live off the fat of the land, now it's getting colder they return to our gardens for easier pickings. European Blackbirds will soon join them so getting your beak into a well-stocked garden takeaway is very important.

Instead of looking for wildlife it came looking for me. As Kate, me and Bob the cat sat on the sofa watching David Attenborough, a particular favourite of Bob's. Uncharacteristically Bob sprang off the sofa and dashed to the bookcase. He tried putting his paw behind it with little effect. We moved off the sofa to help. Each time we moved books and various artefacts a mouse appeared briefly. Eventually we met eye to eye with a rather attractive wood mouse, soft brown with large ears and big dark eyes. We spent a few seconds looking at each other then Kate went for it going in bare handed to get it. In a death defying move the little wood mouse shot into the air like a tiny ninja, dashed across the floor and behind an unmoveable heavy sofa. We were beaten. Pepper, our other cat, now sat in the doorway with a look of, "Admit it, you were rubbish", on his face. I picked up the cat food and water bowl, so as not to feed the mouse, before going to bed.

That was a mistake I would pay for. Overnight the mouse moved to the kitchen, as I had expected, looking for food and water. Now with no water to drink the wood mouse had to be inventive to survive.

It was only when Kate ran the washing machine, creating a flood that I found out how inventive! The mouse was desperate for water, it smelt its way to the sump pipe under the machine, and nibbled a finger sized hole in it - clever but expensive. It took a few days to catch that mouse in a humane trap. Again, very clever and ninja like it avoided capture, that is until I used blutack to stick a pecan nut inside the trap. Eureka! The ninja mouse was mine! If it happens again I will leave that water bowl available. The mouse now lives down in the field with a tale to tell.



Fully insured

Family-run Business

# **JP Marshall & Sons**

## **Roofing Specialists & General Builders**

- Re roofs • Repairs • Slating • Tiling • Flat roofs • Leadwork
- UPVC Fascias • Soffits • Guttering • Velux windows
- Pointing • Brickwork • Garden decking

[www.jpmarshallandsons.co.uk](http://www.jpmarshallandsons.co.uk)

**01926 411660**

**07967 012114**

Est 1968

# **JP Marshall & Sons**

## **Roofing Specialists & General Builders**

We are a fully insured small family run business, established in Leamington Spa in 1968 by Joseph Patrick Marshall, and now run by his sons Kevin and Michael.

At J.P Marshall & Sons we take pride in every job we do, and pride ourselves in achieving the best quality finish. We welcome customer or building control inspections.

We undertake all jobs from replacing slates or tiles, re-pointing or lead work, to complete strip and re-slate, re-tile or flat roofs, and new-build. We also undertake insurance work. We offer a friendly no obligation estimate service, and guarantee all work.

So for a fast, friendly, reliable and professional service to the highest standards, with no corners cut, do not hesitate to call J.P Marshall & Sons.

[www.jpmarshallandsons.co.uk](http://www.jpmarshallandsons.co.uk)

**Tel: 01926 411660 Mob: 07967 012114**

Kevin Marshall



**I think everyone was looking forward to the November meeting, if only for the hope of tasters.** Graham, our speaker, explained how he had trained as a pastry chef, then joined Warwick University as the head chef at the conference centre, catering for anything from 150 up to 4000. We have enough trouble catering for the Christmas party! He then went on to become Executive Chef at the university. I curtsied!

It was a hobby that became his profession, enabling him to travel the world learning his trade. He explained how chocolate was used by the Aztecs as a drink, it was improved by the Spanish but the product we know today is the creation of Mr Fry. The best chocolate school in the world is Barry Callebaut based in Banbury. While he was talking Graham was working chocolate on a marble slab tempering the melted chocolate. He showed us how bubble wrap or a bay leaf could be used to create different effects. He did let slip that Elton John had bought 24 chocolates once costing £34 each.

Graham had brought a solid chocolate Christmas tree built by one of his staff, but during the evening constructed another with coloured decorations. Again he explained how colours were produced. It was a very enjoyable evening, especially when the tasters were available.

Members were reminded that the Group carols is on 1st December at 7:30pm here at St Chads. Do feel free to come and have a sing with us. This is followed by the Christmas party on the 4th, again if

you would like an evening out with a friendly crowd do give me a ring, and we are hoping to make door wreaths on 16th. Will we have time for Christmas I wonder?

Into January and we don't have a meeting but are going to the Leopard for a meal on the 7th and Wendy Sankey will be hosting a coffee morning on the 10th for the Air Ambulance.

County events include Serious Science Lectures, a visit to London to learn about the women of the Great War and then on to the Imperial War Museum, and learning how to bead a necklace or knit socks.

As you can see we have a busy time ahead. it will soon be a new year, why not make a resolution to come along to one of our meetings, make some new friends or rekindle old ones. To tempt you our February speaker is about Troop Aid, in March we will learn about Roman Alcester, and in April a talk entitled Royal Visits .

Don't forget keep your used postage stamps - I love getting little parcels through the letter box. If you would like to know more about any of the above do give me a ring. Anne Allen 01926 424135

theWI  
INSPIRING WOMEN





# Simons Systems



Available for all your computer requirements including:  
PC's & Laptops, New & used systems, Repairs & upgrades  
Virus/Malware Removal, Data back & Windows re-installation  
Upgrading memory/Hard drives/Rom drives/Graphics, etc  
Internet - modems fitted, wireless, networking.  
Any repairs or computer problems. ***No call out charge***

T: 01926 316 119

E: [sales@simons-systems.co.uk](mailto:sales@simons-systems.co.uk)

M: 07751 811 097

W: [www.simons-systems.co.uk](http://www.simons-systems.co.uk)

# C.G. MOTORS

Established for 33 Years

**\*ALL MAKES AND MODELS\***

Your local garage at Brookside Farm

First left past The Leopard

Bishops Tachbrook

01926 313256

**\*SERVICING\*MOT\*REPAIRS\*WELDING\***

**\*ENGINE DIAGNOSTIC CHECKS\***

**\*RESETTING OF WARNING LIGHTS\***

**\*READING AND ERASING FAULT CODES\***



## December Rotas

### Cleaning

- 6<sup>th</sup> Sue Hitchin
- 13<sup>th</sup> Desnee & Mervyn Fletcher
- 20<sup>th</sup> Jenny & Peter Lister
- 23<sup>rd</sup> Jo Shaw (ready for Christmas Eve)
- 27<sup>th</sup> Liz Sheehan

### Assistant Stewards

- 7<sup>th</sup> Andrew Day
- 14<sup>th</sup> John & Ros Pratt
- 21<sup>st</sup> Graham Leeke
- 24<sup>th</sup> Huw Davies (Midnight Mass)
- 25<sup>th</sup> Fiona & Ewan Meades

### Sidespersons

- 7<sup>th</sup> Sheila Hayward & Kath Reason
- 14<sup>th</sup> Mervyn & Desnee Fletcher
- 21<sup>st</sup> Simon & Melissa Odling
- 21<sup>st</sup> Vera Vale & Anne Kelley -  
Carol Service
- 24<sup>th</sup> Ray & Anne Allen - Midnight Mass
- 25<sup>th</sup> Rod Smith & Mac McGarrick -  
Christmas Day
- 28<sup>th</sup> Sheila Hayward & Kath Reason

### Coffee

- 7<sup>th</sup> Gill Yarwood & Rod Smith
- 14<sup>th</sup> Fiona Meades & Joan Alderman
- 21<sup>st</sup> Ros Pratt & Jane Everett
- 28<sup>th</sup> Jean Coope & Mac McGarrick

## January Rotas

### Cleaning

- 3<sup>rd</sup> Fiona Meades & Jo Jordan
- 10<sup>th</sup> Esther Boyle & Gill Yarwood
- 17<sup>th</sup> Sue Hitchin
- 24<sup>th</sup> Desnee & Mervyn Fletcher
- 31<sup>st</sup> Jenny & Peter Lister

### Assistant Stewards

- 4<sup>th</sup> Andrew Day
- 11<sup>th</sup> Graham Leeke
- 18<sup>th</sup> Huw Davies
- 25<sup>th</sup> John & Ros Pratt

### Sidespersons

- 4<sup>th</sup> Mervyn & Desnee Fletcher
- 11<sup>th</sup> Vera Vale & Anne Kelley
- 18<sup>th</sup> Rod Smith & Mac McGarrick
- 25<sup>th</sup> Ray & Anne Allen

### Coffee

- 4<sup>th</sup> Maralyn & Roy Brown
- 11<sup>th</sup> Gill Yarwood & Volunteer
- 18<sup>th</sup> Ros Pratt & Jane Everett
- 25<sup>th</sup> Fiona Meades & Joan Alderman

### The Christian Family - Marriage

David Savage & Stephanie Jones  
*We offer our congratulations and  
 best wishes for the future.*

## Enjoy the magic of Christmas with the Warwickshire Symphony Orchestra

This year the Warwickshire Symphony Orchestra's popular Christmas concert will be conducted and hosted by Paul Leddington Wright. Well known from BBC1's Songs of Praise, Paul will be bringing with him the St. Michael Singers, to add a lovely choral note to the afternoon. The concert takes place Sunday 7<sup>th</sup> December at 3 pm at the Guy Nelson Hall, Warwick School, Warwick.

The programme is designed to appeal to all the family. This year the concert will include a selection of short Christmas pieces and carols, including a narration of *Another Night before Christmas* with orchestra, Nigel Hess's *Christmas Overture*, Delius's delightful *Sleigh Ride* complete with bells, local composer Robert Ramskill's *I heard the bells*, Prokofiev's *Troika* and Paul's own arrangement of *Jingle Bells*. There will also be the chance for the audience to sing along with one or two popular carols. To book tickets T: 01926 850385 or buy online [www.wso.org.uk](http://www.wso.org.uk)



60s, 70s, 80s, 90s

and  
**Today's Music**

*Perfect for all Occasions*

For More Info Call  
**07932 081583**



# FOAM

CUT TO ANY  
SHAPE & SIZE

Replacement sofa  
cushions a speciality

## JORDANS

14 High Street  
Leamington Spa  
CV31 3AN

Tel. No. 01926 421330  
[www.foamcushion.co.uk](http://www.foamcushion.co.uk)

# ALLENS AERIALS

TV AERIALS-DIGITAL AERIALS-  
STEREO AERIALS

Phone me last for price match.  
Support your local family man.

NO VAT  
OAP DISC  
BEST PRICES  
EST. 30 YEARS  
07775684062

**We have just completed our 3rd month playing football at the ground on the Meadow and we have to thank you all for making us very welcome.** While Jim is marking out the pitch the dog walkers stop and talk to him so he is getting to know quite a few people.

We had a shaky start with the team and a few changes were made but we now have a more settled side and are now blending in some young talent. Due to the standard of the football league we are in each game is like a cup final therefore we would like to thank the people from Bishop's Tachbrook who have come and supported the team. Your support is much appreciated by the players.

Thanks to Alan the groundsman, Karen, Elaine and Pat at the Club all who are looking after us so well.

## **Our December fixtures**

Sat 6th Dec away v Barton

Sat 13th Dec home v Alcester

Sat 20th Dec home v Austrey

Sat 27th Dec away v FC Stratford

Sat 3rd Jan home v FC Stratford



**We would like to wish all parishioners a Happy Christmas and a Happy New Year.**

## ***IS YOUR LOCAL VOLUNTARY VILLAGE GROUP SHORT OF FUNDS?***

Each year the Parish Council sets aside funds to support and enable community development within the Parish of Bishop's Tachbrook. The 2014/15 second funding round will start in December with all applications having to be filed with the Clerk by 31st December. Incomplete documentation and late submissions will not be considered. Full details are available on the website or please contact the Clerk. Applications are invited from:

- Organisations with a long term commitment to a sporting, educational or cultural activity and organisations with a commitment to activities which benefit the local community and events for such organisations which demand substantial costs.

Applications are welcome from local organisations, a local group of a national organisation or a new group whose purpose is to provide activities for the benefit of the group and local community. If you are interested in applying, you will be required to provide the following details:

- A written application outlining the aims/purpose of the organisation
  - A detailed proposal of the project/programme for which funding is required and the benefits it will bring to the parish
  - A copy of the organisation's accounts for the previous year
  - An agreement to publicise the activity in the Parish Magazine
- Subsequent details of how the grant has been spent

Written applications (by letter or form) should be submitted to Mrs Corinne Hill, Parish Clerk, Gaydon Fields Farm, Gaydon CV35 0HF or via email to [parishclerk@bishopstachbrook.com](mailto:parishclerk@bishopstachbrook.com). Application forms are available from the Clerk on 01926 641220 or by email.

## 1st Bishop's Tachbrook Rainbows

Is your daughter aged 5,  
does she like having fun, playing games,  
making things and  
being part of a group?  
Then Rainbows could be for you.  
Rainbows are part of the  
Girl Guiding group.

If your daughter is interested  
email Jade at  
jadechoc@aol.com



## Crossword Solutions



Do you run a business and are  
any of the following a burden?

\* Company accounts \*

\* VAT \*

\* Taxation \*

\* Payroll Services \*

\* Company Secretarial Work \*

Or do you need new systems and  
procedures?

**If the answer is yes, then contact us.**

FMS (Warwick) Ltd

114 Kingsley Road,

Bishops Tachbrook

Tel: 01926 314286 (Evenings)

or 07802 735491

michael.jaggard@btinternet.com

(Sage & Inland Revenue Agents)

This is a non-profit magazine  
supported by personal donations  
and contributions from St Chad's  
Parish Church Council and  
Bishop's Tachbrook Parish Coun-  
cil. All adverts are printed in good  
faith. The Bishop's Tachbrook  
Parish Magazine cannot take any  
responsibility for the contents of  
the advert or the services  
provided by the advertiser.

Printed by: Cadman Printers Unit  
7D Jenton Road,  
Sydenham Industrial Estate,  
Leamington Spa  
CV31 1XS  
Tel: 01926 423742



# 2014

## NEW YEARS EVE AT THE LEOPARD

COCKTAILS ALL NIGHT

FIREWORKS AT MIDNIGHT

DANCE WITH OUR LIVE DJ UNTIL 1AM

MAIN MENU AND SPECIALS MENU AVAILABLE  
BOOK NOW **01926 426466**

NON-DINERS ARE WELCOME

