

parish magazine

Bishop's Tachbrook

www.bishopstachbrook.com

St Chad's



Feb 14



BUILDING BEGINS ON THE ST CHAD'S CENTRE

THE WATERSIDE

CHAMPAGNE BAR • BRASSERIE

Lazy Sunday Brunch ~ 11.30 - 3pm

Tuck into delicious brunch delights such as eggs benedict and smoked haddock with poached eggs from £7.50.

Sunday Lunch ~ 12 - 3pm

Relax and let the world go by at The Waterside Brasserie as you dine from our gourmet two or three course Sunday lunch menu.

Two course menu ~ £19.50
Three course menu ~ £23.00

Waterside, Stratford-upon-Avon CV37 6BA
01789 298 682
www.theardenhotelstratford.com
enquiries@theardenhotelstratford.com



'Complete with its own Champagne Bar, terrace and chic interiors, the Waterside Brasserie brings a whole new feel to eating out in Stratford-upon-Avon.'

THE BRASSERIE

LEAMINGTON SPA

Come and explore our 2 AA Rosette art deco inspired Brasserie with starters from £4.25 and mains from £11.50.

LET'S LINGER

A three course set menu lunch or dinner served in The Brasserie. Includes a glass of Prosecco. (Monday to Saturday) Available for tables of up to 6 diners.

£19.50 per person



20% Off

Enjoy lunch or dinner in The Brasserie and receive 20% off your total bill when dining from the A la Carte menu!

Voucher must be supplied to claim offer. Offer valid until 31/2/14. Only one voucher per visit. Max 6 diners. All offers at the manager's discretion. Terms & conditions apply. No copies accepted. Excludes selected dates including Valentines and bank holidays.

REF BishTachMag.

Name.....

Email.....



Harbury Lane, Leamington Spa, CV33 9QB
www.mallory.co.uk 01926 330 214 2 AA Rosettes

Online gift vouchers now available!

My Uncle Don used to be something of an expert at dominoes. He'd play against anybody; young or old, novice or fellow expert, it made no difference. I think only gardening exceeded it as a passion. And he used to say that dominoes was the most Christian game he knew. Most games depend on building up a winning hand, on doing better than other people; but in dominoes, you could only win with an empty hand; when you'd given everything away. That was the whole point of the game; to finish up with nothing!

'The man who loves his life will lose it, while the man who hates his life in this world will keep it for eternal life,' said Jesus. And the writer of the Letter to the Hebrews reminds his readers that it was not by claiming privileges but through obedience to the will of his heavenly Father that Jesus became the source of salvation. 'Where I am, my servant will also be'.

What does this mean for Christian stewardship? Luke in his Gospel tells us that as Jesus travelled around Galilee he was supported by a group of women who provided for Him and His disciples, out of their resources. (Luke 8:v3). Just as Jesus' ministry needed support so does the ministry of the church today. In school assemblies, in moments of quiet with the bereaved, in work with young people or the pastoral encounters in hospitals or the village, members of St Chad's, paid or unpaid, give of themselves to support the community. Many people, I know, appreciate this support, but ministry must be paid for.

"Everything in heaven and on earth is yours. All things come from you, and of your own do we give you." This comes from the First book of Chronicles in the Old Testament and is often used in churches when the collection is taken. It is found in 1 Chronicles 29. One of the most powerful Kings, King David, recognises that all his wealth and power is given to him by God. This passage helps us reflect on why we give, our motive – do we give out of thankfulness?

So first, God gives to us and hopefully this leads to us giving in response. Scripture shows that God responds to our giving by blessing us. This does not mean that if we give £50 to God he will reward us by giving back £150 – no, as we give we receive joy from giving, thanks from those we have helped. Giving isn't just money but time, skills and talents.

This brings me nicely to Jesus' parable of the talents. (Matthew 25:14-30) In this parable a master gives his servants money and when he returns, wants to know what they have done with that money. I think there are two important lessons to be learned about stewardship from this parable; firstly that one day we will be held to account by the Master for the gifts He has entrusted to us and secondly, that everyone who has given will be given more. I believe this to mean that as we invest time and energy in seeking to follow Christ, so we grow – in faith, in a greater perception of God's blessings to us, and in a greater understanding of what we can do to serve Jesus both in and through our local church here in Bishop's Tachbrook.

Joys & Sorrows

Do you have any major life events to share? We'd love to hear of births, engagements, anniversaries and significant birthdays. Call Julie on 01926 420826 or email Julie_m_thomas@hotmail.com

Gordon Webb

Gordon passed away on 5th November and was laid to rest in St Chad's churchyard. Gill Webb wishes to thank Reverend Elaine, friends and neighbours and the Sports and Social Club for their support.



Congratulations to Dee & Sam Bateman, proud parents of Florence Anne (above) who was born on 13th December 2013 weighing 7lbs 10oz.

Advance Notice Church Electoral Roll

A revision of the church electoral roll will take place during the period 16th February to 16th March. If you would like to add your name to the roll, application forms can be obtained from the church, the vicar (Elaine Scrivens) or the Electoral Roll Officer (Joan Alderman Tel 651643).

All those whose names are already on the roll **DO NOT NEED TO RE-APPLY.**

Membership of the electoral roll enables worshippers to vote at the Annual Parochial Church Meeting.

Mrs Gilks

Bill Gilks, together with his wife, Phil, and 3 daughters, Rosemary, Ann and Margaret, came to live at Church Farm, Bishop's Tachbrook in 1944. The girls lived in the village throughout their childhoods and each one of them was married in St Chad's Church.

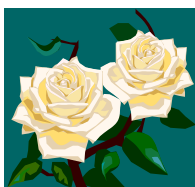
Following the sale of the farmhouse and dilapidated buildings in late 1960, Bill and Phil Gilks moved across the village and lived in a bungalow - Wyslade Farm. Following the death of Bill in 1992, Phil (or Mrs Gilks, as she was known in Bishop's Tachbrook) moved back into the village centre and lived at 8 Court Close. Some of you may remember her dashing about the village with her little dog, Kizzie. She was a regular church-goer together with her sister-in-law, Effie Small. Effie herself passed away last year.

Mrs Gilks lived happily in Court Close, still driving her car, until she was 91 when she moved into Arden House in Leamington Spa.

About 4 years ago she moved to a home in Cheltenham and 2 years later to St Faith's, Cheltenham. This was to be nearer her family.

It is with regret that that we have to report that Mrs Gilks passed away on 27th November 2013, aged 98 years. She is now at peace.

Margaret Glenn (nee Gilks)



The Christian Family

Baptisms

Molly Casey (pictured below)

Lucy Martha Henderson

Amelia May Hobbins

Romilly Grace Lewis

*We welcome them into the
Christian Family.*

Marriage

Andrew Carlisle and

Gemma Hollinshead

*We offer our congratulations and
best wishes for the future.*

Funerals

Gordon Webb

Kathleen Woodfield

Betty Ward

Norma Hewitt

Iris Adams

*We pray for their souls and offer our
sympathy to their
families and friends.*



We have a lovely members lounge that we hire out for funerals - free to all members and £40.00 to non members.

www.bishopstachbrook.com

Over the past few months we have been working on a new look Bishop's Tachbrook village website, and we are pleased to announce that it is now live and ready for you to explore: www.bishopstachbrook.com.

You'll find everything that was on the old site – news, events and local groups and businesses – and we have livened the whole thing up with lots of new stuff. You can read stories from your favourite Parish Magazine writers, browse photo galleries, read what's happening at St Chad's and get the latest information from the Parish Council. You can even book the village Marque and get a weather report for the day!

What's more, you can keep up with new additions to the website by signing up for email newsletters or following us via Twitter ([www.twitter.com/bishtach](https://twitter.com/bishtach)).

And bringing us right up to date with the digital age we have also created a Facebook page where you join in the discussion about village life: www.facebook.com/bishopstachbrook

Speed Awareness

The Community Speed Watch have been out again mounting patrols on Oakley Wood Road and Mallory Road. Extra efforts are being made to encourage drivers to slow down. The Parish Council is working closely with Warwickshire Police and Highways to implement a variety of initiatives. One small but important measure has been to provide Wheelie bin stickers to a number of residents. If you've been given a set of these *free* stickers, please use them and make sure your bin is out in a prominent position on collection day, so together we can make Bishop's Tachbrook a safer place to live.

Community Marquee

The Bishop's Tachbrook Parish Council has purchased a 20' x 40' canvass Marquee and formed a 'Community Marquee Working Party' (CMWP) tasked with managing the facility. The marquee is available for community events within Bishop's Tachbrook and neighbouring parishes, as well as to support local groups holding private events. A donation will be requested from Community Groups outside the Parish and for Private use within the Parish, which would be payable in advance to the Bishop's Tachbrook Parish Council for the sinking fund, that will be used to meet insurance costs, repair and ultimately to replace the marquee.

Bookings will be made on a first come basis, with priority given to community groups. If the marquee is to remain erected overnight, then it must be manned continuously to provide the necessary protection.

To register your community group and book the marquee, including details of nominated CMWP volunteers, please email the Parish Clerk
- ParishClerk@BishopsTachbrook.com.

Sureway Heating Services

Your **central heating** and **gas boiler** is a vital part of your home. You rely on it all year round to keep you warm and heat your water. We understand this and we have **over twenty seven years experience** in keeping this important part of your everyday life running smoothly, safely and efficiently. Our plumbing techniques are specialised to cater for heating repairs, general plumbing and specialised bathrooms.

- **Boilers & Central Heating Services**
- **Repairs and Installations**
- **Landlords Gas Safety Certificates**
- **Service & Repairs of Gas Fires**
- **Bathrooms & Wet Rooms**
- **Warm Air Heating & LPG**

01926 426 715 or 01926 337 157

1 MORRELL STREET, LEAMINGTON SPA,
WARWICKSHIRE, CV32 5SZ



www.surewayheating.co.uk

Drop Dead Gorgeous Curtains

Beautiful Bespoke Curtains, Cushions and Roman Blinds.
All made to measure and sewn by hand.

I can supply a range of fabrics and poles or I'm happy to work with yours.

Free measuring and free fitting.

I also take on curtain alterations big or small.

Please call Sharron for friendly and helpful advice or to arrange a free quote on: 01926 612226 or 07760395805

Email: dropdeادgorgeouscurtains@gmail.com

Or visit my website www.dropdeادgorgeouscurtains.co.uk

I also offer sewing classes covering a range of topics and techniques or can tailor one to your needs, please visit my website for details and call me to book a place or make an enquiry.



Stewardship by Rob Thomas

“God gives to us and hopefully this leads to us giving in response. Scripture shows that God responds to our giving by blessing us.”

Elaine wrote this recently and it made me stop and think about what my family and I receive from St Chad’s. It is of course a place of worship where we feel included in God’s family. But for us equally it’s a place of community in a world where community seems ever more elusive as the years go by. We have made lifelong friends. We have seen our children thrive spiritually and as responsible citizens through their involvement with St Chad’s and the Scouting movement for example. We have celebrated joyful weddings and mourned the loss of loved ones. The common thread through all of this has been St Chad’s.

We support St Chad’s with our regular giving because we want to invest in our community.

There are broadly **three** areas of support which St Chad’s requires. **Firstly**, the cost of maintaining the building and churchyard can be in the region of £5,000 every year, with some very exceptional years (such as this one) where repairs to the roof and Chancel for example can run to £100,000. Through the Church Commissioners who have responsibility for aspects of the fabric and through grants from trusts and foundations and other fundraising, these obligations are met.

The **second** of these areas is operating the Church building. St Chad’s is not only used on Sundays, but also for weddings, baptisms and funerals as well as by the school. St Chad’s is a busy meeting venue for a wide variety of groups, with the Tower Room often in use in the evenings. To meet the costs of heating, lighting, insurance and running St Chad’s, thousands of pounds are raised every year through the Raffle, Fete and other events. So thankfully we’ve got this key area covered as well.

The **third** area, where we direct our personal giving, is *people* related. We are exceptionally fortunate to have Elaine (and Jim) living in Bishop’s Tachbrook adding so much to our community life. Elaine not only conducts services, but also plays a vital community role, active in the life of our school, regularly visiting the lonely, ill or troubled, serving everyone regardless of their spiritual beliefs.

Elaine is paid a modest stipend for a half-time post, yet gives generously, working more than full-time hours. The stipend, accommodation and training for the post runs to £30,000 every year, which we must find through the regular giving, collections on the plate, envelopes and bank standing orders. To do this year on year is a real challenge. In recent years our giving has not been sufficient to meet these costs. Thanks to the generosity of other Parishes, ministry in Bishop’s Tachbrook has been subsidised in the past. Presently we raise some £25,000 a year, just **£5,000** short of covering what is needed in Bishop’s Tachbrook.

The time is coming when we won’t be able to rely on other communities to financially support our Parish. We now have an opportunity to re-double our efforts to find the

Continued on page 11



LOCKE & ENGLAND

AUCTIONEERS & VALUERS

Established 1834

Auction Every Thursday

If you are thinking of moving, downsizing or clearing a property or business.

Call for a free no obligation collection quote on 01926 889 100 or email valuers@leauction.co.uk

ENTRIES FOR OUR WEEKLY SALES CAN INCLUDE:

Antique & Modern Furniture • Clocks • Books
Ceramics & Glassware • Pictures & Prints • Bicycles
Jewellery & Watches • Garage Tools & Equipment
Household Electrical Items • Timber & Building Materials
Office Furniture & Equipment • Retail Products & Stock
Horticultural & Commercial Equipment • Vehicles
Garden Furniture & Effects • Collectables

COLLECTION SERVICE AVAILABLE

The Auction Centre 12 Guy Street, Leamington Spa, CV32 4RT

01926 889 100 www.leauction.co.uk

twitter

facebook



Do you run a business and are any of the following a burden?

* Company accounts *

* VAT *

* Taxation *

* Payroll Services *

* Company Secretarial Work *

Or do you need new systems and procedures?

If the answer is yes, then contact us.

FMS (Warwick) Ltd

114 Kingsley Road,

Bishops Tachbrook

Tel: 01926 314286 (Evenings) or 07802 735491

michael.jaggard@btinternet.com

(Sage & Inland Revenue Agents)

Leopard Recycling Green Bin

A new recycling bin has been installed at the Leopard car park and is available for all local residents to use. Clothes and shoes are being collected, with the proceeds being distributed by a West Midlands Charity, Green World Recycling, to environmental projects in the third world (see <http://www.greenworldrec.org/>).

The clothes and shoes that are collected each week are sold into eastern Europe and as a not-for-profit enterprise Green World then invests in projects such as providing fresh water, solar cookers, assistance with sustainable farming etc, mainly for people living in African villages. Next time you're cleaning out your wardrobe, why not help change the World for the better and put your unwanted clothes and shoes in the Green Bin at the Leopard. The bank is located at the far end of the main car park and is picked up weekly. Any support would be greatly appreciated.



Defibrillator

Just a reminder for everyone using the Meadow area or the Sports and Social Club that there is a defibrillator situated on the wall just to the left of the Club entrance. It is in a bright green box and is easy to spot. It was purchased by the residents of Overberry Orchard following a number of fund-raising events. In an emergency situation this piece of equipment can drastically improve the chances of survival. I cannot emphasise just how valuable defibrillators are in the minutes before medical help arrives. The machine itself is very simple to use and gives step-by-step instructions. The code to open the cabinet in an emergency can be obtained from the Club during opening hours or by dialling 999. It has been provided to benefit the whole community so please remember **if the need arises USE IT!!** David Hales

Stewardship continued full funding needed. If we do not cover our own costs, we can reasonably expect that in the future the Diocese may seek a more economical solution. That could well see the end of a priest living, working and ministering in Bishop's Tachbrook.

It's hard to imagine how much poorer we'd all be without the tireless work, loving support and pastoral care provided by a resident priest. I believe our community life would be considerably diminished.

Ensuring the future of this valuable work in our community is something I believe we can achieve if we work and give together and I'd like to invite you to join me. With a Standing Order and with Gift Aid, it's both easy and affordable. In this way we can make sure that **people** remain at the heart of our community, through St Chad's.

If you're interested in learning more about how you can give, tax efficiently to support the ongoing ministry in Bishop's Tachbrook, please email me at robin.morgenthomas@gmail.com or ring me or Julie on 420826 for an information pack.



Driving School

£22 per hour lesson

www.csldrivingschool.co.uk

Tel: 01926 831713

mob: 07594810822

e: p.hancock_adi@hotmail.co.uk

Local independent driving school run

by Peter Hancock

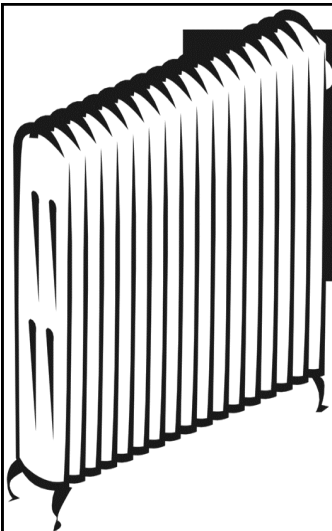


find us on Facebook

**VISITING
QUALIFIED
CHIROPODIST**

**Mrs Lynn Hemmings
MSSCH, MBCHA**

01564 784466



**ANDY VEALL
PLUMBING & HEATING**



213264

TEL: 01926 315387

**Gas Fitting • Central Heating
Plumbing • Bathrooms • Showers
Landlord's Gas Safety
Installation • Servicing • Repairs • Power Flushing**

The bubble of the Bishop's Tachbrook world is awesome, one of the only places in the world to mirror the original Roman calendar, having a 10-month year – Parish Magazine time.

The Roman year used to begin in March or “Martius” because this was the time when spring begins. I love this idea – lose the darkest months! The months of January (Januarius) and February (Februarius) were added to the calendar during the Julian calendar reform around 700 BCE by the second king of Rome. This really messed things up because September through December have names that mean the seventh through tenth month.

I'm reverting to the Roman/Tachbrookien method to identify 10 things you can look forward to in a food-growing year.

1. Weird names

Love seed catalogues! Have fun searching out what to plant in a month or so's time. Explore the names: 'Enorma Elite', Bunyard's Exhibition, White Emergo – they're just varieties of Bean. Treat yourself to a night or two searching through the Organic Gardening Catalogue www.OrganicCatalogue.com.

2. Fish and chip forks

Some fish and chip shops give you wooden forks to eat your feast with. Excellent for turning into plant labels. See how inventive you can be reusing stuff.

3. In the end it's all rot

I know plastic doesn't, but most things in our gardens do. It's easy to compost waste, even in the smallest space, it's free – what's not to love!

4. Couch potatoes

Potato growing is so easy you barely need to leave the couch! 4/5 tubers a plastic bag and some compost and you're off. Why miss out on home grown?

5. Strawberry Fields Forever

Great Beatle's track and fruit (if you don't remember the track, I envy you!). Again easy to grow, even in pots, they taste so much better picked fresh.

6. The invasion of the comic tomatoes

I have vague recollections of a comic relief sketch with the same name. However with Heritage varieties called, Broad Ripple Yellow Currant, Mortgage Lifter and Mrs Taylor's Red Pear, who needs memory? Can be grown outside, including in pots, and they taste so much better than the supermarket can provide.

7. Why Raspberries play instruments

Obvious they're great when they jam! For me, the easiest soft fruit to grow. Try the autumn variety, Autumn Bliss. Tasty, dead easy to grow and to prune you just cut them down to ground level. Skilful!

8. It's good to be in a pickle

My wife is pickled! The pickles she makes are so good she's becoming a pickling legend. A fine way to preserve surplus veg or to make from bought stuff - lovely in those dark winter months.

9. Drink up thy zider

Them Wurzels knew the power of cider. Look at all the apples that go to waste and recycle them!

10. Growing kids

Last Autumn I watched my 18 month old Granddaughter in a small garden with container grown veg, saying 'dig, dig, dig' with a huge smile on her face. Children – the best reason to grow your own.

Have a great growing year!

If you don't grow your own already and would like advice from a Master Gardener then please contact Susan Watt or I suzwatt@gmail.com or 07711 498047 keithwellsted@btconnect.com or 0771 8196577

Being a new first time mum in a rural setting can be quite a daunting prospect, especially when you've had a caesarean section and have been advised not to drive for 6 weeks.

Fortunately, I was not on my own for long as a friend I had met through Bishop's Tachbrook Parish Magazine knew of another mum in the village also looking for some company.

Becki had given birth to Noah at the start of February 2013 and once she was out and about she pushed a note through my door inviting me over for a cuppa. From there the BT Mums group grew and grew! Beth and I had known each other since working together 9 years ago and co-incidentally both named our little girls the same name, albeit Beth having an 'Isobel' in December 2012 and I had an 'Isabelle' at the end of February 2013.

Next came Kim and Daniel, born in March 2013, who I befriended at a coffee morning and recruited to our group. Then I sold Laura a baby related item through Facebook and she joined us with Lucy, born in May 2013. We wondered if there were any more mums in the village who would like to join us and so I put a message in the magazine in November and lo and behold there were more of us!

Emma and Sarah are both second time mums with Harry and Ava-Grace respectively, who are both 4. Sarah had Timothy in December 2012 and Emma just snuck into the academic year with Ellie born at the very end of August 2013.



We meet up a few times a month on a Monday or Friday afternoon depending on who's around as unfortunately most of us have gone back to work. We each take it in turns to host which, as a new mum, is great because you can have someone else make you a cuppa when you don't have any spare hands!

It's been really nice to have friendly faces so close by in the village. I needed to borrow a Bumbo so popped over to Emma's to use hers. Beth was making lemon drizzle cake and ran out of eggs so borrowed one of mine (she still owes me a slice of that cake!) Becki's little boy Noah was tiny when he was born and she gave some of his clothes to my friend who had her son at 23 weeks. Kim always offers to pick up my veg bag from Kingsway Children's Centre.

We share our physical items, as well as sharing advice and information. Becki is the self styled guru Annabel Karmel with her variations on classic recipes. We tell each other about useful places to take our babies such as Tiddlers in Warwick




(Mondays and Tuesdays 10am –12pm at Castle Hill Baptist Church) or Tachbrook Tinies at the Bishop's Tachbrook Sports and Social Club on Thursdays 9.30am till 11am. We let each other know if there's a bargain to be had at nearly new sales and share clothes between the babies - especially fancy dress outfits! In fact Daniel was recently featured in the Toddle About magazine dressed as a pea pod.

Even though we meet up a few times a month face to face, we are in online contact throughout the week when baby things come up. This can be any time of the day or night and we always feel we have each other for support / advice / idea sharing or just to let off steam. It's like a virtual village community.

If you have a baby aged under 18 months and live in Bishop's Tachbrook we'd love you to get in touch. The group is a great way for your baby to meet the other children he or she will be going to school with and you can get to know other mums going through the same things at the same time. For more information please contact me jennyjbevan@gmail.com

Some of our BT babies aged 4 months (above) and 7 months (below).









Come and join us
at Bishops Tachbrook
Sports & Social Club,
Kingsley Road

Each Thursday (term-time)
9.30 - 11.00am

For any parents/carers with
pre-school children

Any questions?
Contact Lisa
on 01926 334708

Parish Magazine Fundraising

Thank you to everyone who contributed to the Parish Magazine fundraising before Christmas.

Donations of £857 were received, which is a fabulous result, and Gift Aid will increase this amount further. Along with the continuing support of our advertisers this means that the magazine has more than covered all its costs again this year. Thanks everyone for your support and we hope you continue to enjoy the magazine in 2014. Please get in touch (catherine.keen@btinternet.com) if you have ideas for new articles and features.

Parish Magazine Committee

Oakley Wood

Oakley Wood is a wonderful woodland asset to Warwickshire. It is designated as a Plantation on an Ancient Woodland Site (PAWS), which means that there has been woodland here continuously since at least 1600, but more recently the native, broad-leaved trees have been felled and replaced with non-natives. Across much of the wood this happened in the 1940s and 50s, though the woodland still has small leftover areas of broadleaved trees as well as a number of mature pollard trees and mature coppice stools.

When Warwick District Council purchased the woodland in 2008 their vision was to ensure that the site can be enjoyed for future generations for recreation and education, whilst over time sustainably restoring it back to its former native composition. Woodland that is made up of trees that are native is generally much more beneficial to wildlife than non-native conifers such as those that dominate the woodland today.

The restoration work began during the winter of 2011, by removing a third of the conifer trees throughout the wood to allow a rich mixture of oak, ash, hazel, field maple and other special native species to return. During the winter of 2013/14 we will be continuing the restoration programme by undertaking some management of the network of 'rides', or wide paths.



The main routes through the wood will be widened to open up the canopy, let more light in and increase the amount of woodland edge habitat. Woodland edges are particularly beneficial for wildlife, especially for insects such as butterflies, because of the variety of different plants of different heights that they contain – known as 'structural diversity'. By retaining many of the native broadleaves the wildlife value of the wood will be improved considerably. An existing example of this type of management can be found on the ride that runs from the depot gate across the wood, through the Oakley Camp. By "undulating", or making the edges of the wood wavy, we aim to soften the visual impact and provide even more woodland edge. We will be leaving piles of deadwood which will be wonderful for wood-boring insects and fungi. Deadwood is an important part of woodland ecology, allowing natural cycles to take place as they would in ancient woodlands.

The initial visual shock of taking out rows of trees can be a concern to many, but the number of trees being removed are small compared to the size of the site, although as they are at the edge of the paths it may seem more. Once the work is complete the east to west rides will be 25 metres wide and the north to south rides 10 metres. They will then be managed by mowing the brambles and returning scrub in rotation. This will

make the site more accessible for people to enjoy, not having to wrestle with encroaching brambles and to provide a diversity vegetation structure for different types of wildlife. The increased light to the rides will also help them dry out more quickly, reducing the amount of mud.

With a new partnership formed between Warwickshire Wildlife Trust, Warwick District Council and the Friends of Oakley Wood to ensure the vision for the wood is achieved, this is an exciting time for Oakley Wood, bringing benefits for both wildlife and people. Later in 2014 there will be opportunities to get involved in practical work parties and try your hand at traditional woodland management techniques, and in April there will be another woodland crafts event day with lots of family activities.

If you would like to get involved in helping to look after Oakley Wood, or if you have any comments on management, please do get in touch with Karl Curtis at the Warwickshire Wildlife Trust:

Warwickshire Wildlife Trust

Karl Curtis – Reserves and Community Engagement Manager Tel: 02476 308975 or email: karl.curtis@wkwtr.org www.warwickshirewildlifetrust.org.uk

Friends of Oakley Wood www.saveoakleywood.org.uk

Warwick District Council Tel: 01926 353365 www.warwickdc.gov.uk

Friends of Oakley Wood AGM
Bishop's Tachbrook
Sports & Social Club
Tuesday 4th March 7.30pm



Helping Hands

Est. 1989

**Do you need a
helping Hand?**



Our **Bishops Tachbrook** care team has been providing award winning quality homecare since 1989. We offer you home care that enables you or your loved one to remain at home with compassion and dignity by assisting with:

Personal care, housekeeping, companionship or providing a break for an existing family member or care-giver.

So if you are looking for an alternative to residential care or just support for you or a loved one, then we're here to help - from 30 minutes to 24 hours per day, 7 days per week.

To find out how we can help, call
0808 180 1033
or visit www.helpinghands.co.uk



60s, 70s, 80s, 90s

and

Todays Music

Perfect for all Occasions

For More Info Call
07932 081583



Complementary therapies
with a more holistic, spiritual approach

- * Reiki
- * Facials
- * Reflexology
- * Aromatherapy
- * Crystal Therapy
- * Hopi Ear Candles
- * Indian Head Massage
- * Emotional Freedom Techniques (EFT)

Tel: 01926 741255

Email: louise@heathcoteholistics.co.uk

Web: www.heathcoteholistics.co.uk

THE NHS DIRECTORY
OF COMPLEMENTARY AND ALTERNATIVE PRACTITIONERS



103 Heathcote Road, Whitnash CV31 2LX

Spotlight on ... Heathcote Holistics

Name: Louise Bates **Business:** Heathcote Holistics **Year business started:** 1999

Tell us a bit about what your business does: I provide holistic treatments which promote health and well-being. The treatments include Reiki, Reflexology, Pregnancy Reflexology, Aromatherapy, Indian Head Massage, Emotional Freedom Techniques (EFT) and much much more.

Give us a bit of background to the business: I became a Reiki Practitioner many years ago after a friend gave me a treatment and that was the start for me. I then became a perpetual student and continued studying and gaining my Diplomas over a number of years. As well as my formal qualifications, I still attend seminars, workshops and courses on a regular basis to broaden my professional knowledge and to ensure that I offer my clients the best treatments possible.

How did you get into the business? I have always been interested in health and well-being. We are the sum total of everything we eat, drink and think, having a healthy mind is just as important as a healthy body and the treatments I provide support this.

What sets you apart from other businesses? I provide a more holistic, spiritual approach and I incorporate crystals and complementary healing techniques into many of the treatments.

What is your business motto? For a more holistic spiritual approach.

How is your business doing at the moment? The business is going from strength to strength. After 13 years in the business I have built up a large client base and new recommendations come in regularly.

How did the recent recession affect your business? More people are now looking for relaxation to counteract the stress caused by the recession and the health and wellbeing sector is busier than ever.

Where do you see your business in 5 years? As well as running Heathcote Holistics I also run an online shop selling spiritual holistic gifts. I aim to expand this by introducing a downloads page for my own relaxation/meditation CDs.

Who is your target market? Whether it's a relaxing massage or personal transformation using the Emotional Freedom Techniques (EFT) I offer something for everyone from the very young to the elderly.

As a child what did you want to be when you grew up? As a child I wanted to be a deep sea diver. I still love water and I am a keen wild swimmer.

What is the best thing about running your own business? It's not a job to me, it's a way of life and I love everything about it.

What is the worst thing? Book keeping and paper work!

People are always surprised to learn this about me: I belong to Warwickshire Hedgehog Rescue, a charity set up by a group of people in the Warwickshire area, in order to deal with sick, injured and abandoned Hedgehogs until they can be released back into the wild. I also play the piano and accordion in my spare time.

Complete FLOORING

Carpets

Vinyls

Wood

- * Supplied and fitted
- * Sample swatches
- * Free quotes
- * Re-stretches/adaptions

(Will fit customers own Materials)

Call Dylan 07866 638674 / 01926 315116

Email: complete.flooring@btinternet.com

www.completeflooringwhitnash.co.uk

TOM RODGERS TREE SERVICES

**Prompt Professional Tree Care
Established Local Tree Surgeons With Reputation
for Quality Work at Competitive Prices.**

- £5 Million Public Liability Insurance
- All Aspects of Tree and Hedge Work
- Stump grinding
- Domestic & Commercial
- Local Authority Approved
- 24 Hour Call Out
- Dangerous Trees Removal
- Member of Arboriculture Association

FREE
QUOTATIONS
AND ADVICE

01926 810716

07958 794180

www.tomrodgers.co.uk

Church End, Manor Road, Stockton CV47 8JF



Cllr. Caborn confirmed that the District has not decided yet whether the **Gypsy and Traveller Sites Consultation** will be included in the submission draft of the Local Plan which is due to be published by 9th April 2014. It will either be included in this document or produced as a separate document to be discussed later. Cllr Caborn committed to forward consultation dates as soon as they appear. We will keep you informed.

The draft **Community Governance Review** (review of Parish and Town Council boundaries) will be discussed by the Regulatory Committee on 28th January. We understand that a number of residents living in Warwick Gates and Heathcote Park have already responded about the proposed changes and we have urged the District to take their views into consideration. Councillors have been active in this area, outlining residents' concerns talking to committee members.

The **Old Manor House boundary** has been defined and will be listed in Warwick District Council's Local Plan policy relating to Historic Parks and Gardens within the District. This should give this land additional protection, similar to a listed building.

The District Council have granted a 99 year lease to the **Avon Valley Bowling Club** which will be based on the recreation area on Harbury Lane. The Club will be relocating from Jaguar Land Rover and the District has agreed to build an indoor bowling facility here. The PC will make early contract with the bowling club so that the parish can have an early influence on the proposals for the site as they emerge.

250 responses were received from the Housing Needs Survey. Thank you to all residents that participated. The report on the outcome of the survey is imminent. The Neighbourhood Plan Team will be using this information to help determine the number and type of properties the Parish requires.

Cllr. Les Caborn is liaising with the County Flood Officer to try and get the **flooding along Oakley Wood Road** sorted.

We have alerted the District Council Planning and Enforcement Officers to the **access on Harbury Lane to the Woodside Farm Housing Site**. Only outline planning permission has been granted so it is unclear why construction appears to have started and as this road has seen a number of traffic accidents we are concerned that there could be a safety issue.

The District Council has reported that the **Village Consultation Event** on 8th January was well attended. We hope that you found this event useful and thank you for taking part in the consultation. It illustrates how much residents care.

Councillors agreed to support the Youth Club, the Village Events Group and the PCC, in a **project to rejuvenate the churchyard**, by way of grants. The Village Events Group are actively organising a family day in the summer on the Meadow and this grant should help with their plans. We look forward to hearing more and getting the date in our diaries, when announced.

Continued on page 37

Neighbourhood Plan New Year Resolution Party!

Thank you to all residents who turned out to the Neighbourhood Plan New Resolution Party. The event was so well attended and there was a constant flow of visitors to the event from beginning to end. It was an interactive event intended to involve residents in thinking about the future of the parish for the next 10 years or more.

There was plenty to do for all the family. For younger children there was a crèche and musical entertainment. For older children and adults, there was a design activity involving the layout of small housing estates. Some of these ideas may feed in to real site designs over time. There was also a street naming competition too with some really good suggestions.

Dave Heaton, who ran both activities said, *"Children and adults were thinking about all sorts of planning factors that directly affect them for the model making and there were some common themes coming through both in discussion and in the models they were making...The most popular amenity was simply a large grass play area surrounded by houses. A couple of older participants reminisced about their own childhood when incorporating this feature; one even encircled it with a road, so kids could race around it! There was some very genuine positive praise from some of the adults taking part. Two started off very sceptical, having had their arms*



twisted to have a go! But they really got into the exercise. It wasn't just a craft activity for these people – they were having their say about how they want the village to expand. Many of the kids taking part were having some very active parental contribution in their model making too. As an exercise it helped people to visualise the issues and work together on solutions."

As well as hands on activities, there was plenty to see. We had our planning advisors presenting some conclusions on where housing might best be sited around the village area. There was also a stand covering the initial feedback from the housing needs survey; and a London architect presenting innovative award winning ideas on rural housing.

At the History Group stand, through illustrating how the parish has changed over recent centuries, we were reminded that some development is inevitable. There was also an opportunity for residents to feed in their ideas on green spaces, healthcare provision, traffic volumes, transport links and leisure and well-being. To sustain us, throughout the event there were drinks and plenty of home-made nibbles on offer.

Lots of opinions were recorded on these topics. These are being collated and will be used as evidence to inform the shape of the emerging neighbourhood plan.

A special thank you goes to the core team of organisers who put a lot of thought and effort into ensuring the success of the event over the past few weeks. Martin Drew - Head Honcho;

Keith Wellsted - Exhibition Design; Dave Heaton- Design Activity Creator; Kevin Joyce - Photography; Susan Watt- Head of Hospitality. This core team were assisted by many other volunteers to whom we also owe great appreciation.



**No job
too small**

**Free
Quotations**

Phil's Plumbing and Heating

**Fully Qualified
and
Insured Plumber**

Bathrooms, Central Heating & showers

I am a locally based plumber
offering very competitive rates
on any plumbing or heating job.

No job too small,
Please give Phil a call

Call Phil

Daytime: 07971 046392

Evening: 01926 400746

Email: philmunday@hotmail.co.uk

**Bishops Tachbrook
Leamington spa**

Lent Course

This year we are joining with our Churches Together partners in Whitnash for our Lenten reflections.

We will be using Will You Join in Our Crusade?: The Invitation of the Gospels Unlocked by the Inspiration of Les Miserables by Steve Mann.

The course will be led by Rev Elaine Scrivens, Rev Richard Suffern, Rev Mike Grimsley and Rev Pam Howells.

The course will run on Tuesday evenings at St Margaret's Whitnash and Wednesday afternoons at Whitnash Methodists. The same material will be used in the evening and afternoon sessions.

We begin on Tuesday 11th March 7:45 / Wednesday 12th March: 1:130
And then on following Tuesdays and Wednesdays throughout Lent.

Do come and join this ecumenical adventure. Elaine

HISTORY GROUP

NEXT MEETING: Tuesday, 11th February - 2.30pm in St Chad's Church

AGM followed by a presentation by Sally Howells of Leamington NADFAS on the newly designed TRAIL round St Chad's Church. We will then try out the trail and if we don't get lost we will be rewarded with cake, tea/coffee and friendly company.

There's an interesting programme lined up for 2014, including local history relating to World War I. Warwick features in several talks - the Tudor House Inn, the Great Fire, the Priory, and not forgetting Stratford - excavating the garden of Shakespeare's house. Our neighbour, Professor Beat Kumin will entertain us with a brief history of public houses. There will be two outings in the summer. Keep a lookout in the Parish Magazine or parish website for details of each monthly meeting. And why not join us – as a member or visitor? Information from 01926 336749, or breakfast42@tiscali.co.uk

Public Exhibition of Proposed Development

Bloor Homes will be displaying their proposals for new housing, public open space, footpaths and landscaping on land to the south of the village at the Sports and Social Club on Thursday February 27th from 3pm to 7pm. This will be an opportunity to ask them questions about their proposals and give your comments.

DID YOU KNOW THERE WAS A BEAUTY SALON IN THE VILLAGE?



Julie is based at her Home Salon in Parsonage Close, and has over 20 years experience in the Beauty Industry, specialising in:

- SKIN ANALYSIS EVENTS by the INTERNATIONAL INSTITUTE of ANTI-AGING • COLLAGEN STIMULATION THERAPY •
- ENVIRON ANTI-AGING FACIALS • CHEMICAL EXFOLIATION FACIALS • NON-SURGICAL FACELIFTS • ELECTROLYSIS •
- COSMETIC INJECTIONS – FILLERS AND MUSCLE RELAXANTS • INTENSE PULSE LIGHT (IPL) for PERMANENT HAIR REDUCTION • RELAXATION FACIALS • HOT LAVA SHELL MASSAGE • PEDICURES • SOAK-OFF GEL POLISH MANICURES (that last for weeks) • WAXING • TINTING • PAMPER PACKAGES • MAKE-UP PARTIES • PRINCESS PARTIES •

Prices and Special Offers at www.beautyondemand.net or call Julie on 07770 881895



SYCAMORE CARPENTRY & MAINTENANCE



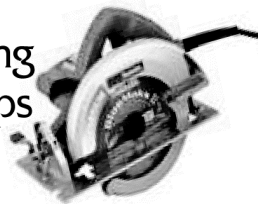
Interior & Exterior Painting
All work around the Home & Garden

Door Hanging
Shelving

Laminate & Wood Flooring

Kitchen Fitting & Worktops

Fencing, Gates etc.



Contact Kev Harris
Tel 01926 774795 Mobile 07769 551318

Bolingbroke Drive Bench

Bishop's Tachbrook Parish Councillors Lisa Balzaretti and Carol Gabbittas successfully applied to the Warwick Rural West Forum for a grant to replace a rotting bench on Bolingbroke Drive, Warwick Gates that no one had taken ownership of since the development was built. Councillor Adrian Harrison then contacted a local firm, George Worrall Engineering, who designed, made and fitted the new bench. The picture shows Warwick Gates residents enjoying their new bench!



St Chad's Civic Service

As a church community we are aware of the many people who contribute to our lives in Bishop's Tachbrook, Warwick Gates and the surrounding area. This service is our way of saying thank you and celebrating all that we have and all we are.

The service will take place at **10am on 2nd March 2014**, the Feast Day of St Chad. We hope to have pupils from Bishop's Tachbrook School helping to lead the service along with our uniformed organisations. Refreshments will be served after the service.

GRAHAM LEWIS CARPETS

BISHOP'S TACHBROOK

**CARPET SUPPLY,
FITTING AND
CLEANING**

**01926 882986
07759 773688**

Rob Loveday Electrical Services

**NICEIC Part P Approved
Electrician
and
City & Guilds Qualified PAT tester**

**The local electrician you
can rely on - no job too small**

**Call Rob for a fast, friendly
and efficient service**

Mobile : 07825 345009

Office : 01926 429082

Email:- robertloveday@sky.com



KITCHENS & BATHROOMS

'Your local family business est since 1985'

**From a simple refurbishment to
complete install**

**Replacement doors, drawers &
worktops made to any size**

Full design service offered

Project managed or supply only

Large local showroom

Our own employed team of fitters

Quality customer service

DIAMOND INTERIORS

01926 332288

27 Hurlbutt Rd, Heathcote Ind Estate

Leamington Spa, CV34 6TD

www.diamondinteriors.net



As I had predicted back in November, our Christmas Party was yet again a resounding success. Excellent company, food, and entertainment. About 50 members and friends braved the evening, including the Warwickshire County Chairperson Jeryl Stone and her husband Stuart. The buffet supper consisted of turkey, ham, quiches, and various salads etc. which was followed by "The Puddings" and what an array of those there was. Pavlovas, trifle, cheesecake, and fresh fruit salad to name but a few. Needless to say those didn't last long either. Members bring along their own drinks.... so say no more. The evening progressed with an auction and then the long awaited entertainment. This consisted of three very different acts. Becky started us off by introducing us to Marilyn Monroe, this was followed by four of our husbands who did a skit about working at Stratford Theatre but it turned out not to be on stage but selling programmes!! The final act of the evening was Hansel and Gretel. It's amazing how a wig changes someone. Jenny and Margaret were the parents of Marion and Meg who were played as stropky teenagers but then with a mum looking as stunning as Jenny, who permanently had a fag in her mouth, what more could you expect. Ann was the witch, even I had to do a double take! Yet again a fun evening was had by all.

In December some of us visited Abbey Cym Hir which was decorated ready for Christmas, we attended the group carol service, and visited the flower festival held at the Lord Leicester Hospital.

Instead of our meeting in January a group of us had a meal at the Leopard. Our apologies if you were trying to have a quiet meal that night.

At our next meeting the speaker will be Karen Fisher who works for the Woodland Trust. Her talk is entitled 'The Ancient Tree Hunt'. In March James Kerr will tell us about **Shakespeare's Scenery** and in April, Merleen Watson will explain about the work of **Hearing Dogs for Deaf People**. An interesting start to the new year.

County events include scrabble, art workshop, another literary lunch, creative writing, jewellery making, lunatick astronomy well dressing at Tissington and a day entitled Japan in the Raw! So something for everyone.

Many thanks to everyone who has left parcels of stamps for Marie Curie Cancer Care. We are on our way to filling a black bin bag. Also thanks for your old bras. No not for me, for Bravissimo to help towards fund raising for their charity. which this year is Eve.

If you would like to come along to a meeting and see how we work either just turn up one month or give me a ring. We would love to meet you.

Anne Allen 424135

theWI
INSPIRING WOMEN

Notice Board

Royal British Legion Poppy Appeal 2013

On behalf of the Royal British Legion and all beneficiaries of the Poppy Appeal I would like to thank the residents of Bishop's Tachbrook for their generosity in 2013.

Harry Upstone

Thank You

On behalf of Dogs Trust and Avon Cat Rescue Jackie and Lynda would like to thank everyone who brought us food, treats, toys and towels etc. for the cats and dogs. All donations were very much appreciated. Happy new year to all.

Bishop's Tachbrook JuniorYouth Club

Monday 6.30-8pm in the
School Hall

During Term Time Only
£1.50 per session and yearly
membership of £2 payable
in September.

For more information
contact Anoushka on 311538 or
anoushka76@hotmail.com
or come along on a Monday.
We desperately need more adult
Volunteers, if you can spare a couple
of hours on an odd Monday then
please let me know.

Warwick Gates WI

A new branch of WI has started at
Warwick Gates meeting on the first
Wednesday of each month
7.30pm

Warwick Gates Community Centre
(5th February, 5th March,
and 2nd April).

Come along or if you would like to
know more,
call 01926 419998 or e-mail
admin@wfw.co.uk

The Warwickshire Symphony Orchestra

Saturday 8 March 2014 at 7.30pm

Guy Nelson Hall, Warwick School

"A unique & exceptional
musical event"

Peter Donohoe – guest conductor
Philip Martin – piano

Peter Donohoe, international piano
virtuoso, friend and Patron of the
WSO, conducts with Philip Martin,
the celebrated Irish pianist,
returning to perform Rachmaninov's
expansive Piano Concerto No. 3

Capriccio italien: Tchaikovsky
Piano Concerto No. 3: Rachmaninov
La Mer: Debussy

Tickets in advance T: 01926 850385
Order online at www.wso.org.uk

Mobile Library Service

From February 2014, the Mobile Library service to Bishop's Tachbrook will be as follows:

St Chads Close - every 3rd Monday from 10.00 to 10.20.

Church Lees - every 3rd Monday from 10.25 to 10.40.

The first visit will be on February 17th, then March 10th and 31st. Because the normal April visit falls on Easter Monday, alternative arrangements will be made and customers notified closer to the time. Then regular service will resume on May 12th, June 2nd and 23rd and so on.

Badminton

Mixed social group is looking for experienced new badminton players.

Warwick Gates Community Centre
every Wednesday 8pm - 10 pm.
Call 01926 493092 for more details.

Christmas Tree

A big thank you on behalf of everyone in Bishop's Tachbrook to the Christmas tree team - Piers. Ray, Michael, Lyn and Gary - for their sterling efforts putting up and taking down the tree, which withstood all the stormy weather.

Thanks also go to Debbie and Alan Griffiths for the St Chad's Church Christmas tree.

Country Dancing Club

2nd Thursday of every month

8pm at Sports and Social Club

Contact Julie Jaggard 314286

All welcome!

Next deadline for magazine items is 15th February. Please send to catherine.keen@btinternet.com

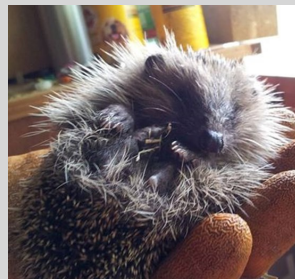
Warwickshire Hedgehog Rescue

Can you help Bosworth the baby hedgehog and his friends?

If you can donate any of these items to Warwickshire Hedgehog Rescue please drop them at 9 Farm Walk, Bishop's Tachbrook they would be very welcome:

Newspaper folded and shredded
Fleecy blankets/dressing gowns to cut up for bedding
Water bottles
Old saucers (unchipped)
Cat/dog food

If you see a hedgehog in distress or during daytime please call 01926 339107 or 07909 176797



Have you seen Henry - the heron that is?

Or maybe it's Henrietta. Maybe he has brought a few friends because there have been several sightings all over Tachbrook since Roy took his photos in November. Stuart saw him at the top of Kingsley Rd having raided a local pond (right) and Barbara spotted him not far from there. He's also been seen in Holt Ave but we at the bottom of the village have not been neglected. He likes to perch on a neighbour's roof and one morning we watched him waiting patiently in a garden at the bottom of Mallory Rd. We gave up watching and waiting for him to make a catch long before he did.

The best time to see him is early in the morning as it begins to get light. I'm told herons also like to hunt at dusk but I've not seen him then. He is a Grey Heron and might travel quite a distance to feed here. Grey herons like to hunt alone and their skill is in stillness and patience that fools the prey into feeling safe. With lightening speed they stab the unfortunate fish, frog or small animal with their long sharp beak. I think that ability to keep so still is like an invisibility cloak - how can you miss seeing such a large bird!

I said at the beginning it could be a female. As far as I can discover there is no difference and the only time you

might know is during courtship when the male calls to attract the female and, if he's lucky, one turns up. The call is described in the books as 'frank'. Pronounce that if you can! They also make clattering noises with their bills.

How about a few other fascinating Heron facts:

They nest together in Heronries high in tall trees.

The oldest ringed Heron recorded was 25 years old.

The nearest Heronries to Tachbrook are Charlecote Park, Coombe Park and

Brandon Marsh. One was recorded in New Waters in the 1800s in a group of elm trees.

The nests are made of sticks and twigs lined with moss. The same nest is used year after year with more material added.

Courtship begins in February and 4 or 5 eggs are laid by mid March.

It will be about 50 days before the chicks leave the nest.

Steve Harvey's report

The New Year arrived like a newborn baby, warm, wet and windy. So mild that back in December we had a large Bumble Bee on flowers in the garden and I heard two Blackbirds singing. Now they don't get underway until mid February. It may be the influx of visiting Blackbirds encouraging our local birds to sing and stake



their claim. Late December- saw Hazel catkins hanging yellow with pollen, especially down Europa Way. They are not due to February either. Snowdrops are pushing through - always nice to see them.

The Robin sings all through the winter, usually before daybreak outside our bedroom window. Now he's joined by Hedge Sparrows, Great tits, Song thrush and in the Lime trees by the church, a beautifully echo-y Mistle thrush.

A couple of weeks ago I heard a starling singing away on an aerial its throat all puffed out against a pale blue sky. Now Starlings are famous for mimicking other birdsong. As I listened the Starling gave its version of a Blackbird, a Kestrel alarm call, a Tawny Owl, a Chiffchaff and possibly, part of a Swallow's song even with the clicking; all birds it would have listened to and stored on its memory stick. A little further away was a group of Starlings all singing together. As they are not looking for territories at the mo, they must be singing just for the joy of it. Oh, and the Starling is the only bird I have heard sneeze. I've walked past Starling nests at night and heard several of them sneezing. Apparently Mozart kept one as a pet. A clever, adaptable, acrobatic vocalist. I do like a Starling.

So do I Steve. I have been putting out fat blocks to encourage them. We used to have so many visit our garden that I'd worry that the smaller birds wouldn't get a look-in but for the last few years we've not seen any until I put out the fat block. In years gone by that might have lasted a day as what appeared to be every Starling in the district came to feast. How many have I encouraged? One regular!

Another sometimes joins it but they squabble and aren't inclined to share. Four others came and perched on the fence one day but our resident was having none of it and they have not returned.

We looked out of our bedroom window just as the sun was setting and saw a flock of starlings flying past - then another flock and another - in fact about six flocks flew by plus a few stragglers. They seemed to be heading for Castle Park or maybe New Waters. I saw flocks flying in the same direction only today, 13 January, just about sunset. They must all be feeding somewhere.

The snowdrops will be out by the time you read this. Spring is just around the corner. Do send in your reports and photos. We might even get some on the new look Bishop's Tachbrook website.

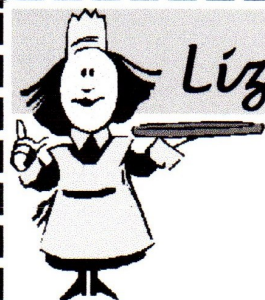


K9 Cuts
Professional
Dog Grooming

Call Debbie at Compton Verney

Landline: 01926 641149
Mobile: 07789687762

£5 off 1st Appointment
With this Advert
- Book Now -



Lizzy Pickles Catering

Your Local Caterer

For All Occasions
Business Lunches
Parties
Weddings
Christenings
Funerals
Buffets
Training Sessions

Home of the Lizzy Pickles
Sausage Roll

Most Items Homemade

Menus Tailored To Suit
Your Needs

Lunches and Buffets from
£3.95/head

Established over 10 years

To Discuss Your Catering Requirements call:

Lizzy Pickles

Tel: 01926 422438

Mob: 07917 036757

email: lizzy.pickles@tiscali.co.uk
Kingsley Rd, Bishops Tachbrook

Moving home?

Need some extra space?

Safe, secure storage for domestic and commercial uses

Flexible
storage
options

Discounted
moving
services

Van
rental

Flexible
opening
hours

Daily
storage
rates

Packing Materials Available*



Harbury Lane, Leamington Spa, CV33 9QB

Tel 01926 882282

www.squabstorage.co.uk

*Free delivery to local area



St Chad's Centre

After 10 years work, we started building the St Chad's Centre just before Christmas.

Having crystallised the Planning Consent, we will then pause the building while we marshall the remaining funds needed to finish building Phase 1 of the Centre (foundations, walls and roof), which we expect to do next Spring. To mark the occasion, the Trustees mustered in the churchyard to witness Elaine breaking ground and to raise a glass to toast the event (see front cover). We were also joined by Sean and Graham representing the Parish Council.

St Chad's Church and Churchyard works

St Chad's PCC will be undertaking various works to the fabric of the church and in the churchyard over the coming months, including starting the construction of the St Chad's Centre; repairing stonework; replacing roofs; maintaining hedges and trees. Access for contractors will be across the Village Green, as no other route is available. In early 2014 a builders' compound will be erected on the Village Green to enable Phase 1 construction of the Centre. Update reports on the progress with these various contracts will be published in the Parish Magazine, Parish Website and on the Church Noticeboard. Please contact the Churchwardens Andrew Day (tel: 889417) or Linda Stevens (tel: 334812) with any questions. Thank you for your understanding.

Bishop's Tachbrook Primary School

Our Year 5 teacher Miss Hemming, organised a day of bread making with a little professional help from Morrisons at Leamington! Pupils spent the morning measuring, mixing, kneading, shaping and designing their loaves which quickly rose with the fresh yeast they had used. Sharlene kindly popped them in the School oven so that every pupil went home with their very own loaf!



Fully insured

Family-run Business

JP Marshall & Sons

Roofing Specialists & General Builders

- Re roofs • Repairs • Slating • Tiling • Flat roofs • Leadwork
- UPVC Fascias • Soffits • Guttering • Velux windows
- Pointing • Brickwork • Garden decking

www.jpmarshallandsons.co.uk

01926 411660

07967 012114

Est 1968

JP Marshall & Sons

Roofing Specialists & General Builders

We are a fully insured small family run business, established in Leamington Spa in 1968 by Joseph Patrick Marshall, and now run by his sons Kevin and Michael.

At J.P Marshall & Sons we take pride in every job we do, and pride ourselves in achieving the best quality finish. We welcome customer or building control inspections.

We undertake all jobs from replacing slates or tiles, re-pointing or lead work, to complete strip and re-slate, re-tile or flat roofs, and new-build. We also undertake insurance work. We offer a friendly no obligation estimate service, and guarantee all work.

So for a fast, friendly, reliable and professional service to the highest standards, with no corners cut, do not hesitate to call J.P Marshall & Sons.

www.jpmarshallandsons.co.uk

Tel: 01926 411660 Mob: 07967 012114

Kevin Marshall



BT Brownies

Caroline, Caron,
Sally & Steph

Happy New Year from all of us at Bishop's Tachbrook Brownies, we have a lot planned to look forward to over the next 6 months.

Brownies are celebrating their 100th Birthday this year and we are looking forward to tackling the Brownie Challenge badge which includes a lot of new and exciting activities, including a trip to Laser Quest. Badge Bonanza Day is coming up and the girls are looking forward to completing new badges and seeing how many badges they can achieve in one day.



We are also looking forward to our annual Wags show which is coming up shortly, along with Brownies Birthday Scavenger Hunt, Church Fete, Fun Day and an Alien themed Disco to celebrate Brownies 100th Birthday.

We would also like to welcome Bethany M who has made her Brownie promise recently and as another year ended we have had to say goodbye to our older Brownie, Freya W. We hope you have enjoyed your 3 years of Brownies as much as we have enjoyed having you be a part of our unit and best of luck for the future.

Parish Council News continued

Three oak trees have been planted by the Harbury Road crossroads.

I am hoping that by the time you read this the **slabs will be laid at the bus stop** opposite The Leopard!

The **damage to the play equipment on the Meadow** is being addressed but a specialist repair is required, so this may take a little time to organise.

The **management of Oakley Wood** will transfer from the District Council to Warwickshire's Wildlife Trust. This is great news since WWT are very passionate about the areas they manage and have great expertise in woodland and wildlife management.

The District Council are looking at improving **facilities at the crematorium**. Councillors have met with officers and exchanged views. A planning application will be discussed at the February meeting.

The new website has been launched. This is very exciting news for the many groups that use it and residents since more information will be available. More next month.

Councillors have agreed the **budget** and there will be no increase in the payments you make towards the precept. We have budgeted for play equipment, grants to community groups, a crossing point along Mallory Road, completion of the Neighbourhood Plan and quite a bit more.

The Parish Council meets next on Thursday, 20th February at Bishops Tachbrook Primary School at 7.30pm. All residents are welcome to attend.



Simons Systems



Available for all your computer requirements including:
PC's & Laptops, New & used systems, Repairs & upgrades
Virus/Malware Removal, Data back & Windows re-installation
Upgrading memory/Hard drives/Rom drives/Graphics, etc
Internet - modems fitted, wireless, networking.
Any repairs or computer problems. ***No call out charge***

T: 01926 316 119

E: sales@simons-systems.co.uk

M: 07751 811 097

W: www.simons-systems.co.uk

C.G. MOTORS

Established for 33 Years

ALL MAKES AND MODELS

Your local garage at Brookside Farm

First left past The Leopard

Bishops Tachbrook

01926 313256

SERVICING*MOT*REPAIRS*WELDING

ENGINE DIAGNOSTIC CHECKS

RESETTING OF WARNING LIGHTS

READING AND ERASING FAULT CODES

A big THANK YOU to all those who, over 2013, have supported our fundraising activities, namely the Cream Teas and Coffee Morning. At the end of the year we were able to make donations of £250 to the MU. We sent:

* £100 to the International headquarters of MU in London for the Emergency Relief Fund which is given to branches all over the world who are in immediate and dire need, often after a flood or other natural disasters.

* £75 stayed in Coventry diocese and went to one of our favourite MU activities, AFIA (Away From It All). Last year 6 families were given a holiday, and quite a few others had days out to water parks and others fun places. These breaks are given to those who meet set criteria and always to families who haven't had a holiday for several years because of their circumstances. Just being able to go away and spend time together enriches them and helps them to relax and drop their worries for a week. If you know of anyone in those type of circumstances then please get in touch with Elaine, our Vicar. Referrals can only be made through clergy or Social Workers.

* £75 was sent to our own Diocesan MU General Fund in Coventry to support the activities that are generated there and in the branches in the diocese.

These were in addition to funding the Wedding Fayre last January and the Angel Tree gifts for prisoners' children in November.

By the time we send in our annual subscriptions at the end of January then

we will have £2.58 in our Branch bank account! And that's just how it should be. MU exists to support marriage and family life and to help those families who find themselves in a bad place. We only have 12 members and so we do extremely well in the money we generate for MU.

SO the cycle begins again and we need to get our fundraising activities underway for 2014. Our first event will be a **Coffee Morning with home-made cakes sale on Saturday 22nd March.** So to all our supporters, both regulars and new ones, we look forward to seeing you then. Details will be in the March magazine.

Our next branch Meeting is on Tuesday 4th February at 2 pm at 81 Kingsley Road. This will be our AGM after which we will have some light relief in the shape of a very easy quiz or such like and a cuppa. People are always welcome to join us for the meetings (although the AGM is not the most inspiring!) to find out what we are about. New members are also most welcome of any age – young, middle aged or elderly, men and women, so do drop along to our gatherings.

Thank you again for all your support.

Jenny Lister (Branch Leader) Tel. 427922

Mothers' UNION
Christian care for families

C PULLIN AND SON

Monumental Masons

Five generations
of Quality Manufacturing
and Service

All Aspects of
Monumental Masonry



Showroom at: 19A High Street
Leamington Spa CV31 3AW
Telephone: 01926 426435
www.pullinsmemorials.co.uk

FOAM

CUT TO ANY
SHAPE & SIZE

Replacement sofa
cushions a speciality

JORDANS

14 High Street
Leamington Spa
CV31 3AN
Tel. No. 01926 421330
www.foamcushion.co.uk

ALLENS AERIALS

**TV AERIALS-DIGITAL AERIALS-
STEREO AERIALS**

**Phone me last for price match.
Support your local family man.**

**NO VAT
OAP DISC
BEST PRICES
EST. 30 YEARS
07775684062**

Bishops Tachbrook Cycle of Prayer

Praying for our Community

I have agreed to write the Prayer Calendar each month. If there are any particular concerns you would like us to include, or you feel I have left out something important, please let me know. I am John Pratt and can be contacted at

j.a.pratt@btinternet.com

This month we pray for:

Those who live in:

Beale Close
Bishop's Close
Bolinbroke Drive
Bradford Close



Organisations:

Did you make a New Year's resolution? If so, have you already broken it? At this time of year so many of us start off with good intentions but then run out of steam. If we are just relying on ourselves, our own will-power, it will probably be a repeat of previous efforts. Why not share our dreams, our hopes with a friend, a family member? Together we can often do something that was impossible just by ourselves

Dates in February

Sunday 2nd - Presentation of Christ in the Temple - Candlemas
Sunday 9th - 4th Sunday before Lent
Friday 14th - St Valentine's Day
Sunday 16th - 3rd Sunday before Lent
Sunday 23rd - 2nd Sunday before Lent

February Rotas

Cleaning

1st Fiona Meades & Jo Jordan
8th Esther Boyle and Gill Yarwood
15th Sue Hitchin
22nd Desnee & Mervyn Fletcher

Assistant Stewards

2nd Kevin Pantling
9th Debra Cokayne
16th John & Ros Pratt
23rd Huw Davies

Sidespersons

2nd Vera Vale & Joan Alderman
9th Rod Smith & Mac McGarrick
16th Sheila Hayward & Kath Reason
23rd Mervyn & Desnee Fletcher

Coffee

2nd Jean Coope & Mac McGarrick
9th Maralyn & Roy Brown
16th Gill Yarwood & Rod Smith
23rd Ros Pratt & Jane Everett

Worship at St Chad's

Sunday

10am Holy Communion (Sunday Club is held on the 2nd and 4th Sundays of the month)

First Sunday of the month

8am Holy Communion (BCP)
10am Family Service

Wednesday

11:15am Holy Communion (BCP)

Are these times convenient for you?

Would you like a mid-week communion service in the evening or an early morning service? Please let me know, the church is here to serve you and if you find that you cannot come to church on a Sunday but that a Tuesday evening would be great, then I am happy to provide what you need. Elaine

Ist Bishop's Tachbrook Rainbows

Is your daughter aged 5,
does she like having fun, playing games,
making things and
being part of a group?
Then Rainbows could be for you.
Rainbows are part of the
Girl Guiding group.

If your daughter is interested
email Jade at
jadechoc@aol.com



Are you interested in being a Brownie?

Bishop's Tachbrook Brownies meet on a Wednesday at 6pm till 7.30pm. We have fun, make, work on badges, go on outings, sing, play games and meet new friends. If you are interested in being a Brownie when you are 7, please contact Caroline Loveday on 429082 or 07796 034371 or carolineloveday@sky.com to find out more.



Girlguiding UK
girls in the lead

Warwickshire Young Voices

We rehearse Thursday Evenings during term time at Harbury Village Hall from 6.30-7.30pm. We take all children age 7-16 and offer a free trial session (normal subs £30 per term), We already have children from Bishop's Tachbrook who attend regularly and we would welcome more. Please go to www.warwickshireyoungvoices.org for more information.

Church Officers

Vicar Rev Elaine Scrivens Tel: 426922

Church Wardens Andrew Day Tel: 889417 Linda Stevens Tel: 334812

Deputy Church Warden Rod Smith

Treasurer Vera Leeke Tel: 882675

Magazine Editor Catherine Keen Tel: 886980 catherine.keen@btinternet.com

Advertising Editor Pam Davies btachbrookmagad@live.co.uk

This is a non-profit magazine supported by personal donations and contributions from St Chad's Parish Church Council and Bishop's Tachbrook Parish Council. All adverts are printed in good faith. The Bishop's Tachbrook Parish Magazine cannot take any responsibility for the contents of the advert or the services provided by the advertiser. Printed by: Cadman Printers Unit 7D Jenton Road, Sydenham Industrial Estate, Leamington Spa CV31 1XS Tel: 01926 423742

FISH & CHIPS

The 
Leopard

TAKE-A-WAY



TELEPHONE ORDERS ARE WELCOME!

01926 426466

£6

