

# parish magazine

St Chad's



**Bishop's Tachbrook** May 13



Brownies keeping  
Tachbrook tidy



# BISHOP'S Tachbrook School

## Friday Food Fest

*Farmers market with local produce*

Stalls, activities, games, food to 'make and take', homemade goodies  
Café, plant stall, cakes, chocolate raffle and lots more

**Fri 10<sup>th</sup> May 3pm – 6pm**

**All welcome**, food fun for everyone, please come along and bring your friends and family

Contact Susan Watt 07711498047 [suzwatt@gmail.com](mailto:suzwatt@gmail.com) if you would like to participate or pass on the contact details to a local supplier



## THE BRASSERIE LEAMINGTON SPA

*Easter Sunday - Sunday 31<sup>st</sup> March*

Spend some quality time with the family  
over a delicious Easter Sunday Lunch.  
Three courses inc coffee ~ £27.50pp

*Let's Linger*

Three course lunch or dinner, including a  
glass of Prosecco ~ £19.50 pp (Mon - Sat)



## FREE DESSERT!

Enjoy a Brasserie Sunday Lunch for  
just £15.50 and receive a delicious  
dessert free!

Voucher must be supplied to claim offer. Offer  
valid from 15.3.13 to 1.6.13. Only one voucher  
per visit. Max 6 diners. All offers at the  
manager's discretion. Terms & conditions  
apply. No copies accepted. Excludes Easter  
Sunday and bank holidays.

REF BishTachMag.

Name.....

Email.....



Harbury Lane, Leamington Spa, CV33 9QB  
[www.mallory.co.uk](http://www.mallory.co.uk) 01926 330 214 2 AA Rosettes

*Online gift vouchers now available!*

**After St Chad's AGM in March I spent some time in prayer, wondering what God is wanting from me and the Church in this place.** It seemed to me that

"change" was in the air; Jorge Mario Bergoglio was elected by the College of Cardinals in Rome and became Pope Francis and Justin Welby was enthroned as the new Archbishop of Canterbury. As I sat, curled up in my dressing gown (I make sure I'm comfortable when praying!) a particular passage from the bible came to me.

*"what does the Lord require of you but to do justice, and to love kindness, and to walk humbly with your God?"*  
(Micah 6:8)

The verse comes from the Book of the Prophet Micah, it is found in the Old Testament and it is likely that a person in exile in Babylon wrote this verse. The writer wants to know what needs to be done to curry God's favour and before this verse all sorts of sacrifice and ritual are offered but God's answer is very simple; to be just, to be kind and to walk with God as your companion. Does this sound familiar? Love your neighbour as yourself and love the Lord your God? Not much change here you might think, but if we actually lived in this way, the change in our church, community and society, would be enormous.

I would love to see us living as a community where we seek to do justice, where everyone, regardless of race, gender, sexual orientation or social status was treated as an equal and where all are loved and valued.

It would be wonderful if kindness was at the forefront of all we do; in the words we speak to one another, in all our actions and in the exchanges we make with those we meet and work with.

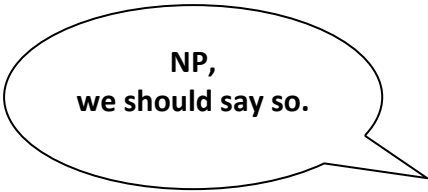
I believe my vision is that, as well as seeing justice and kindness being an integral part of not only our church life but also our community life, that we walk humbly with one another, no-one believing they are better than another and being ready and willing to listen to and learn from each person we meet, whether adult or child, Christian or member of another faith or no faith. If we as a church and as a community can do this then we will all be transformed.

I would like to finish with a quote from Archbishop Justin's inauguration sermon.

"Let us provoke each other to heed the call of Christ, to be clear in our declaration of Christ, committed in prayer to Christ, and we will see a world transformed." \*

With love and prayers Elaine.

\* [www.archbishopofcanterbury.org/articles.php/5038/we-will-see-a-world-transformed-the-archbishop-of-canterburys-inaugural-sermon](http://www.archbishopofcanterbury.org/articles.php/5038/we-will-see-a-world-transformed-the-archbishop-of-canterburys-inaugural-sermon)



NP,  
we should say so.

### Worship at St Chad's

#### Sunday

10am Holy Communion (Sunday Club is held on the 2<sup>nd</sup> and 4<sup>th</sup> Sundays of the month)

#### First Sunday of the month

8am Holy Communion (BCP)

10am Family Service

#### Wednesday

11:15am Holy Communion (BCP)

Are these times convenient for you?  
Would you like a mid-week communion service in the evening or an early morning service? Please let me know, the church is here to serve you and if you find that you cannot come to church on a Sunday but that a Tuesday evening would be great, then I am happy to provide what you need. Elaine

# Graham Lewis Carpets

**BISHOP'S TACHBROOK**

Carpet supply,  
fitting and  
cleaning

01926 882986

07759 773688

## KITCHENS & BATHROOMS

*'Your local family business est since 1985'*

From a simple refurbishment to  
complete install

Replacement doors, drawers &  
worktops made to any size

Full design service offered

Project managed or supply only

Large local showroom

Our own employed team of fitters

Quality customer service

### DIAMOND INTERIORS

**01926 332288**

27 Hurlbutt Rd, Heathcote Ind Estate

Leamington Spa, CV34 6TD

[www.diamondinteriors.net](http://www.diamondinteriors.net)

## Joys & Sorrows

We would like to make this a monthly addition to the Parish Magazine, in order to do so we would like to hear your news of special events.



If you've missed reading Jenny Bevan's articles and interviews in the magazine recently

here is the reason! **Congratulations to Jenny and Adrian on the safe arrival of Isabelle on 28th February.** Isabelle has been awarded official Parish Magazine Baby status.

Congratulations too to **Becki and Mike Chand on the birth of Noah Michael** on 8th February.

We said our farewells to **Margaret Orme** who was a long standing member of St Chad's and **Ena Burton** who was a stalwart of the village (below left unveiling the Jubilee oak with Helen Bamford).

We pray for their families in bereavement.



**Kim Cockerell and Luke Allsopp** were married at St. Chad's on Saturday 23<sup>rd</sup> March. Although they had planned for a white wedding no-one expected the snow that welcomed their wedding day! The happy couple say that it added to the magic of their day and they have some beautiful wedding photos.



**Test yourself...WEDDING ANNIVERSARIES**  
Traditionally a certain number of years of marriage signalled a certain gift should be given. What gifts should be given for...?

- |        |         |
|--------|---------|
| 1.1st  | 6.30th  |
| 2.5th  | 7.40th  |
| 3.10th | 8.50th  |
| 4.15th | 9.60th  |
| 5.20th | 10.70th |

Answers on page 37

**Do you have any major life events to share?**  
We'd love to hear of births, engagements, anniversaries and significant birthdays. Call Julie on 01926 420826 or email [Julie\\_m\\_thomas@hotmail.com](mailto:Julie_m_thomas@hotmail.com)

**Bishop's Tachbrook Sports and Social Club**

**Entertainment for May**

**SAT 4<sup>TH</sup> QUIZ NIGHT** with The Judge

**SAT 11<sup>TH</sup>** We have a new artist with us tonight **MISS SHANIA Q**

**SAT 20<sup>TH</sup> Free and Easy**

**SAT 27<sup>TH</sup>** Old favourites **SPEN AND DAVE** are back to entertain us

**Entertainment starts at 8.30pm**

**Bingo every Sunday and Tuesday at 8pm**

**REMEMBER ALL CHILDREN WELCOME, COME AND HAVE A  
GOOD NIGHT OUT TELEPHONE 01926 421621 OR  
E-MAIL [enquiries@bishopstachbrookclub.co.uk](mailto:enquiries@bishopstachbrookclub.co.uk)**

**FUNCTION ROOM FOR HIRE AT VERY REASONABLE RATES  
PHONE KAREN CAPEHORN 07855709051 FOR DETAILS**

**REVIVAL**

**Holistic Treatments  
by Kerry**

**Acre Close, Whitnash. Leamington Spa.  
01926 427352 / 07890 444870**

**Aromatherapy** from £24.00

**Body Massage** from £20.00

**Hopi ear candles** £17.00 (Children), £22.00 (Adults)

**Indian Head Massage** £27.00

**Get Fresh Spa treatments** from £25.00

**Reflexology** £15.00 (Children), £27.00 (Adults)

**Gift Vouchers available**

**Free parking**



**Call for our latest offers and further information on any of the above treatments**

# Hedgehog Update

Karen Wood

## **The introduction of our new trail camera has brought a whole new dimension to the mysterious world of hedgehogs.**

We over wintered and subsequently released 10 hedgehogs into our garden at the end of March, and the camera has picked up several of them. Harry Houdini (right), who kept escaping from his hutch, has true to form disappeared. He has a bright blue painted bottom so if you spot him let me know!

You can see the videos at [www.facebook.com/savethehog](http://www.facebook.com/savethehog) - a page created to see if we can make Bish-op's Tachbrook a hedgehog haven. We suspect there is a hotel of them under our decking as it's lovely and dry and the straw we left out has certainly been relocated somewhere.

**Now is the time to start watching out for babies.** The warm weather back in Feb (albeit if only for a couple of days) means we are beginning to spot them in parts of the UK already. Please watch out for nests under your compost heaps and if you find a nest please leave it as undisturbed as possible. Please just have a look before you drive spades in to compost heaps too! If you are concerned that the mother isn't around, after keeping an eye on it for a few hours then call us. Do not attempt to move the nest, the mother will more than likely kill the babies.

Other dangers consist of strimmers, so

please check long grass before using, and please keep netting a foot above the ground, the plants will grow up to it, and it stops the hoglets getting tangled...they are really clumsy. Slug pellets will kill

them too, as they will eat the poisoned snail. Why not ditch the pellets and feed the hedgehogs instead for a much better way of controlling slugs?

Keep shed and garage doors closed and poisons out of reach and lids on rubbish bins, although the introduction of wheelie bins certainly has helped reduce the dangers there. Ponds and pools also need

a ramp or half submerged stones as although they are good swimmers if they can't climb out they will drown. Part of the reason we don't recommend feeding fish flavoured cat/dog food is to discourage them from becoming fishermen. Remember milk and bread is an old wives tale and will kill them. They can't digest the enzymes, and end up dehydrated with a poorly tummy, so please just give water and dry cat/dog food.

As a family we are also delighted to be involved in the community farm in the village being set up by Judith and Paul Macfarlane. It will be a perfect release spot for our hedgehogs!

**Remember if you see a hedgehog out in the daytime then pick it up, put in a box with something over him eg old tea towel and call us 01926 339107 for advice.**



# Sureway Heating Services

Your **central heating** and **gas boiler** is a vital part of your home. You rely on it all year round to keep you warm and heat your water. We understand this and we have **over twenty seven years experience** in keeping this important part of your everyday life running smoothly, safely and efficiently. Our plumbing techniques are specialised to cater for heating repairs, general plumbing and specialised bathrooms.

- **Boilers & Central Heating Services**
- **Repairs and Installations**
- **Landlords Gas Safety Certificates**
- **Service & Repairs of Gas Fires**
- **Bathrooms & Wet Rooms**
- **Warm Air Heating & LPG**

01926 426 715 or 01926 337 157  
1 MORRELL STREET, LEAMINGTON SPA,  
WARWICKSHIRE, CV32 5SZ



www.surewayheating.co.uk

If you are looking for the best quality childcare,  
then look no further than  
Butterfly Den!

## **Another 'OUTSTANDING' for Butterfly Den (March 2013)**

[www.butterflyden.com](http://www.butterflyden.com) or [www.butterflyden.co.uk](http://www.butterflyden.co.uk)

**Childcare that will exceed your expectations...**

from one year of age upwards.

Butterfly Den is a unique, homely, loving, supportive learning environment for your child to enjoy. Set within eight acres of beautiful private gardens and country meadows *Butterfly Lodge* and *Field Den* give endless opportunities for children to feel free and explore through play to reach their full learning potential.

Safety, happiness and well-being are my priority.

**Ofsted 'Outstanding' in Learning and Development**

If you like what you see call Elizabeth Kelly (accredited childminder)  
on 07779 125717 or email [ekelly1912@googlemail.com](mailto:ekelly1912@googlemail.com)

Easy to get to by car, just a few minutes from Bishops Tachbrook & only  
6 miles from Leamington Spa.

**I committed a great sin in April, I missed the meeting... but then so did our planned speaker, Lt. Col. Gerald Lewinski, who was to talk about the Lord Leicester Hospital.** After a day of panic, Doreen was able to re-schedule Marianne Wright, who demonstrated and explained her work in reflexology. I have been told she was very interesting and informative. She explained how she and her husband were once out walking and his feet began to ache, so she massaged them, then thought " I could do this as a profession, " and did. She used Janette as a model / foot, to show pressure points that related to other parts of the body, and a way of massaging that was like a caterpillar crawling along...I can't practise that with my nails. I am sorry to have missed this talk because all reports I have had have been good ones.

County have organised visits to Kensington Palace, Harold Hillier Gardens in Hampshire, Highclere Castle, a cake and plant stall at Federation House on May 18th and a literary lunch in October when the guest speaker will be Felix Francis. National are organising a photographic competition with the theme Inspirational Women, and a fruit cake recipe competition for the WI Centenary in 2015...that is called forward planning.

We have organised a skittles evening, with ploughman's supper, and are hopefully taking part in the Women walk the World event this month. Our annual cake stall is being held on **Saturday May 4th from 9.15 am.** There will be lots of different cakes to choose from plus an excellent raffle. If you are one of those really

good people who don't eat cakes you could always make us one or two or more even. This is our big fund raiser, so please come along to support us. It is also an excellent way to meet members and have a chat about WI. Weather permitting, in June it's Pimms and Croquet again!

In May we discuss the resolution for the National AGM. This year's is **"The NFWI notes with concern the continuing decline of our high streets and the damaging effect this has on local communities. We call on every member of the WI to support their local shops and make the high street their destination of choice for their goods and services. We call on decision makers to work collectively, at all levels, to bring an end to the decline of our high streets and to ensure that high streets flourish and provide a focal point for local communities."** A bit of a mouthful you are thinking, but something very close to my own heart after having worked in retail all my life. This should prove to be a lively debate, which is to be followed by a games evening and yet another ploughman's supper. In June the speaker is Ed Jones who is going to give us a flower arranging demonstration. and in July we are having a cheese and wine evening hosted by Waitrose, both something to look forward to.

I am still collecting used stamps for Marie Curie and old bras for Bravissimo's chosen charity which this year is "The Eve Appeal", so all donations are always welcome. **If you want to know anymore about the above or just about WI give me a ring. Anne Allen 424135**

## **K9 Cuts** **Professional** **Dog Grooming**

Call Debbie at Compton Verney

Landline: 01926 641149

Mobile: 07789687762

**£5 off 1<sup>st</sup> Appointment**  
**With this Advert**  
**- Book Now -**

## **Rob Loveday** **Electrical Services**

NICEIC Part P Approved  
Electrician  
and  
City & Guilds Qualified PAT tester

The local electrician you  
can rely on - no job too small

Call Rob for a fast, friendly  
and efficient service

Mobile : 07825 345009

Office : 01926 429082

Email:- robertloveday@sky.com



## **Drop Dead Gorgeous Curtains**



Beautiful Bespoke Curtains, Cushions and Roman Blinds  
all made to measure.

Curtain alterations also undertaken.

All your needs catered for from fabrics to poles.

Free no obligation quotes.

Contact Sharron for friendly and helpful advice on  
07760 395805 or 01926 612226

Or email: dropdeadgorgeouscurtains@gmail.com



## Spotlight on...

Rob Loveday  
Electrical Services

**Name:** Rob Loveday

**Business:** Rob Loveday Electrical Services

**Year business started:** 2008

**Tell us a bit about what your business does:** I am an electrician working as a sole trader mainly in the domestic electrical market, I undertake commercial work but not on such a regular basis. I also carry out Portable Appliance Testing (PAT Testing). I am a Part P approved electrician and am enrolled with the NICEIC as an electrical contractor.



**Give us a bit of background to the business:** I started the business in 2008 after completing a 2.5 year apprenticeship with an electrical contractor based in Surrey.

**How did you get into the business?** I had always wanted to work for myself and was interested in electrics, so I took redundancy from BP in 2006 and re trained as an Electrician.

**What sets you apart from other businesses?** I am a small local business which enables me to give a personal service. I pride myself on being reliable and offer a friendly and efficient professional service.

**What is your business motto?** "No job too small – Give Rob a call!"

**How is your business doing at the moment?** I am lucky that since setting up on my own I have been constantly busy. In the last year the business has really grown.

**How did the recent recession affect your business?** I started the business at the beginning of the recession so it is hard to say, I have been constantly busy so I assume the recession has not really affected my business.

**Where do you see your business in 5 years?** I hope to grow my customer base but to still remain small enough to offer the personal and reliable service I do at present.

**Who is your target market?** Mainly domestic with a small amount of commercial work.

**What did you do before you ran your business?** I worked for BP for 15 years in numerous roles including Business Analyst, Operational Auditor and Area Sales Manager.

**How long have you lived in Bishop's Tachbrook?** I have lived in Bishop's Tachbrook for 18 years since I re-located from Surrey with BP in 1994.

**What is the best thing about running your own business?** Having the flexibility to be able to plan my work around my family commitments. I enjoy meeting different people in different locations each day.

**What is the worst thing about running your own business?** Paperwork!! And the annual inspection carried out by the NICEIC (electrical governing body).

**People are always surprised to learn this about me, but...** I have been a Parish Councillor for several years !



Driving School

£22 per hour lesson

[www.csldrivingschool.co.uk](http://www.csldrivingschool.co.uk)

Tel: 01926 831713

mob: 07594810822

e: [p.hancock\\_adi@hotmail.co.uk](mailto:p.hancock_adi@hotmail.co.uk)

Local independent driving school run

by Peter Hancock

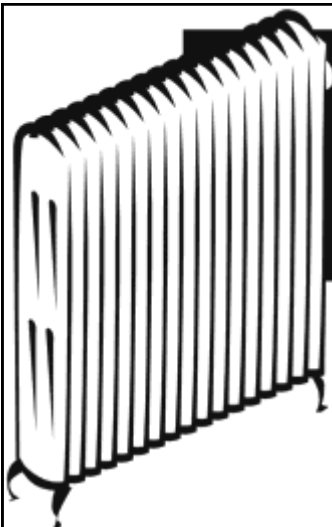


find us on Facebook

VISITING  
QUALIFIED  
CHIROPODIST

Mrs Lynn Hemmings  
MSSCH, MBCHA

01564 784466



**ANDY VEALL**  
**PLUMBING & HEATING**



213264

**TEL: 01926 315387**

Gas Fitting • Central Heating  
Plumbing • Bathrooms • Showers  
Landlord's Gas Safety  
Installation • Servicing • Repairs • Power Flushing

**The McEnroe rant came to mind when I read Severn Trent had warned us to be careful about our water usage. This poem sums up my response.**

## **Reflections on a year**

This time last year it was sunny  
And I wrote a funny  
Little article on watering in a drought  
It provoked the rain  
Minister for water I became  
The soil was mud, The grass was lush  
And the slug kingdom came to reign  
My crops were bare  
Sometimes in despair  
I considered turfing the veg patch to end the pain

But we fought on  
Dig for victory our refrain  
Then came snow disguised as drought  
Now Severn Trent are spouting off again!  
Can I stand the strain?

Yes; off veg growing time and time again  
On a McEnroe point of seriousness Met Office figures show the UK saw only 88% of the average rainfall in January, falling to 66% in February and 65% in March. So although reservoirs are now 94% full we still need to be sensible with our water.

**To link last month's article to this month's, one of our windowsills has been pea-ing down.** I've been planting dried peas (about 40p for a big box from local shops/supermarkets) into no-peat compost in a re-used 2-3 inch deep plastic container with holes in. Plant about 1 cm apart about 1 cm deep. In 10 days you'll have a crop of pea shoots you can eat raw, use in salads or stir fry - they're lovely!

## **Website of the month – Grow Organic Food**

Interesting ideas on getting started growing organically. Also good stuff on climate change and topical tips, plus a link to a new website on why eat organic food.  
Go to: [http:// www.organicgarden.org.uk](http://www.organicgarden.org.uk)

## **What to do this month**

**Sow** This month you can sow most seeds outside (hopefully!); Beetroot, Broccoli, Calabrese, French Beans, Runner Beans, Cabbage, Carrots, Lettuce, Peas, Summer Radish, Sweet Corn, Tomatoes.

**Plant** Start to put out plants you've been sheltering inside. Keep an eye on the weather forecasts for any last minute frosts and, if frost is likely, cover your plot. To harden off veg that you've potted up, put them out in the sun during the day and protect them at night.

**Compost** As the grass grows be careful not to overpower the compost heap with grass clippings.

## **Recycling tip of the month**

If you have a lot of old soup cans, and some string, make a windchime by punching a hole in the soup cans, threading the string through the holes, tie the string in a knot, repeat for all the soup cans. Then tie the strings to an old coat hanger, and hang it up in a sunny spot, when the sun shines on it, it will sparkle. And when the wind blows, the windchime will chime.

## **Finally some spring romance jokes.**

Q: Why did the tomato turn red?

A: Because it saw the salad dressing!

Q: What do you call a honeymoon salad?

A: Lettuce alone.

No job  
too small

Free  
Quotations

# Phil's Plumbing and Heating

**Fully Qualified**  
**and**  
**Insured Plumber**

Bathrooms, Central Heating & showers

I am a locally based plumber  
offering very competitive rates  
on any plumbing or heating job.

No job too small,  
Please give Phil a call

**Call Phil**

**Daytime:**07971 046392

**Evening:**01926 400746

**Email:**philmunday@hotmail.co.uk

**Bishops Tachbrook  
Leamington spa**

## **The Boundary Commission Review of Ward boundaries in Warwick District Council by Councillor Ray Bullen**

**Last month I reported on the Boundary Commission Review of Ward Boundaries as it affected Bishop's Tachbrook and Whitnash particularly.** There were a very large number of responses to the consultation from people in both our wards, all of whom objected to all or part of the proposals. I hoped that the weight of responses would be enough for the Commission to seriously reconsider its recommendations. It seems that they were!

**On 25<sup>th</sup> March, the final recommendations of the Commission were published.** The Commission said "We are grateful to all those organisations and individuals who have contributed to the review through expressing their views and advice."

The Final recommendations are based on Warwick District Council's projected electorate figures for 2018 and retaining the council size of 46 members.

In the draft recommendations, all 23 wards had electoral variances of less than 10% from the average for the district by 2018. Under the final recommendation they decided to move away from electoral equality in the Bishop's Tachbrook ward and propose a ward with 12% fewer electors than the district average by 2018.

In Bishop's Tachbrook, the draft recommendations moved away significantly from the Council's proposals to better reflect their statutory criteria. They received 322 submissions. A large number of these related to the proposals for the Bishop's Tachbrook, Whitnash, Heathcote (also known as Warwick Gates) and Myton areas.

The District Council proposed transferring Bishop's Tachbrook parish to the rural Budbrooke ward to address the concerns of Bishop's Tachbrook being in a three-member ward with Heathcote and Myton as it had historically been in Budbrooke ward. But as this proposal was not explicitly supported by Bishop's Tachbrook Parish Council or any of the representations and because it would be a large and unwieldy ward which would not address the concerns of Bishop's Tachbrook parish they were not persuaded to make such a radical change.

The commission also changed their draft so that Briar Hill ward will remain as Whitnash ward to include the whole of Whitnash, except for any new development east of the parish that was part of Sydenham in the draft and remain a three-member ward. They were also content to include a single-member Bishop's Tachbrook ward comprising the whole of Bishop's Tachbrook parish, as part of our final recommendations, even though it would have 12% fewer electors than the average by 2018. They were persuaded that the evidence relating to community identities justified this variance.

**So, well done to all those that responded. Together, we have made a difference!**

**What happens next?** The Commission has completed its review of electoral arrangements for Warwick District Council. An Order – the legal document which brings into force our recommendations – will be laid in Parliament and will be implemented subject to Parliamentary scrutiny. The draft Order will provide for new electoral arrangements which will come into force at the next elections for WDC, in 2015.

# Complete FLOORING

**Carpets**

**Vinyls**

**Wood**

- \* Supplied and fitted
- \* Sample swatches
- \* Free quotes
- \* Re-stretches/adaptions

(Will fit customers own Materials)

**Call Dylan 07866 638674 / 01926 315116**

**Email: [complete.flooring@btinternet.com](mailto:complete.flooring@btinternet.com)**

**[www.completeflooringwhitnash.co.uk](http://www.completeflooringwhitnash.co.uk)**

## **TOM RODGERS TREE SERVICES**

**Prompt Professional Tree Care  
Established Local Tree Surgeons With Reputation  
for Quality Work at Competitive Prices.**

- £5 Million Public Liability Insurance
- All Aspects of Tree and Hedge Work
- Stump grinding
- Domestic & Commercial
- Local Authority Approved
- 24 Hour Call Out
- Dangerous Trees Removal
- Member of Arboriculture Association

**FREE**  
QUOTATIONS  
AND ADVICE

**01926 810716**

**07958 794180**

**[www.tomrodgers.co.uk](http://www.tomrodgers.co.uk)**

Church End, Manor Road, Stockton CV47 8JF



## YOU HELPED IVANA

**With the help of local partners, Christian Aid was able to establish Land Rights in the rain forests of Bolivia.** No longer can big corporations and greedy land developers force the indigenous farmers from their lands and condemn them to a life of poverty.

Ivana and her family can now plan ahead and cultivate their crops without the mental and physical danger they had been facing. They have a large crop growing cocoa beans which they harvest and grind down before making into hard 'cakes' to be sold. The profit they gain from this, together with their share of the local communities large flock of sheep, means that they are now self sufficient - just as they had been before the greed of others took away their independence.

Everyone in the community helps with the work, even Ivana who is ten. She helps by cutting sideshoots off the plants to stimulate extra production. She and her brother also plant new crops and take their turn in watching over the sheep when they are turned out to graze. This is done in their free time as there is now a specially built school for all the children.

**You, and everyone who has given to Christian Aid in the past, are the people who have made this and so many other projects possible. Thank you for all you have done and will, hopefully continue to do.**

**The RED ENVELOPE is coming - 12-18th May. Please fill it and return it. Thank you.**

## Community Marquee

**The Parish Council has purchased a 20' x 40' Marquee which will be made available from mid-May.** A 'Community Marquee Working Party' is being established to manage this new facility for the benefit of Bishop's Tachbrook and surrounding parishes and will:

- Manage the bookings
- Arrange for care and storage
- Enlist and train a group of volunteers to erect and disassemble the Marquee.

Community groups in the Parish will be able to book the Marquee *free of charge* provided that each group nominates at least **three** volunteers to join the team that will be available to erect and disassemble the marquee for all bookings.

Parishioners will also be able to book the Marquee for private use, for a gift to the sinking fund that will be held as a restricted account by the Parish Council. The Fund will be used to meet insurance costs, repair and ultimately replace the marquee.

**If you are interested in joining the Community Marquee Working Party, please contact Andrew Day on [ajwday@me.com](mailto:ajwday@me.com).**



Helping Hands

Est. 1989

Our **Bishops Tachbrook** care team has been providing award winning quality homecare since 1989. We offer you home care that enables you or your loved one to remain at home with compassion and dignity by assisting with:

Personal care, housekeeping, companionship or providing a break for an existing family member or care-giver.

So if you are looking for an alternative to residential care or just support for you or a loved one, then we're here to help - from 30 minutes to 24 hours per day, 7 days per week.

**Do you need a helping Hand?**



To find out how we can help, call  
**0808 180 1033**  
or visit [www.helpinghands.co.uk](http://www.helpinghands.co.uk)

Gift Vouchers  
available

*Heathcote Beauty  
& Holistics*

On-line shop  
for holistic gifts

For a more holistic, spiritual approach

Reiki - Reflexology - Aromatherapy - Crystal Therapy - Hopi Ear Candles  
Indian Head Massage - Emotional Freedom Techniques (EFT)  
Facials - Waxing - Threading

Contact Louise today for more information

Telephone: 01926 741255

Email: [louise@heathcotebeauty.co.uk](mailto:louise@heathcotebeauty.co.uk)

Web: [www.heathcotebeauty.co.uk](http://www.heathcotebeauty.co.uk)

103 Heathcote Road, Whitnash, Leamington Spa CV31 2LX

Free Parking



**THE NHS DIRECTORY**  
OF COMPLEMENTARY AND ALTERNATIVE PRACTITIONERS



Saturday 8<sup>th</sup> June 1- 4pm

The Church Fete is to be held on the Village Green following the downhill race – it promises to be a fun afternoon for all the family.

Can you please help us by donating? New household items, plants & seedlings, jams & preserves, tins of food, confectionery, biscuits, cakes, books, toys & jigsaws, bottles, toiletries or other prizes suitable for tombola. Sorry no clothing, electrical goods or bric-a-brac can be accepted.



There will be a house-to-house collection in the village - look out for a leaflet through your door soon.  
Alternatively, items may be left at:

The Vicarage, 24 Mallory Road  
11 Farm Walk  
32 Holt Avenue  
1 Launce Grove, Warwick Gates

Can you help on the day?

Contact Desnee Fletcher on 330050 or speak to  
Rev'd. Elaine

**NP, everyone's got a part to play.**

# **TACHBROOK TIME TRIALS**

(A 'Soapbox Derby' or 'Gravity Grand Prix')

**Noon - 1.30pm Saturday 8th June 2013**

START Mallory Rd, opp Beale Close

FINISH Church Hill (as far down as we dare!)

**Make it - then race it!**

**Come and pit your ingenuity, craftsmanship and mettle against other competitors from your community!**

The Time Trials are open to all age groups.

There will be at least two classes of entry.

**Soapbox Cars / Trolleys**

**Chainless Pushbikes**



## **Rules for All Competitors**

1. No stored energy - batteries, fuel - and no motors, engines or pedalling allowed. Just gravity.
2. You must wear a helmet (a bike helmet minimum) and protect your elbows and knees (pads or covered by tough clothing e.g. leather jacket, denim jeans).
3. Your machine will be inspected to ensure compliance with these rules and specifications.
4. Follow marshalls' instructions on the course.
5. The referee's decision is final.

## Specification for Class A - Soapbox Cars / Trolleys

1. **WIDTH** greater than 60cm,  
less than 125cm
2. **LENGTH** no more than 200cm
3. **HEIGHT OF SEAT** less than  
20cm above ground
4. **WEIGHT** no more than 50kg  
without driver
5. **STEERING** is compulsory.
6. **BRAKES** are compulsory.
7. **PARKING BRAKE** or **STAND**  
(so that it can be parked and  
left on a hill) is compulsory.
8. **(New for 2013)** No part of the driver to be ahead of the front axle.



**Please complete and return the entry form below to  
R Brookes, 8 Church Lees, Bishop's Tachbrook.**

Entrants will be required to sign a disclaimer on the day. A small  
donation (suggest £4) to cover event costs would be appreciated.

### Tachbrook Time Trials Saturday 8th June 2013

Name of Entrant or Team Name	
Age on 8th June 2013	
Which Class - Soapbox Car or Chainless Bike?	
Contact Name	
<i>and one of</i> Contact Phone	
Contact Address	
Contact E-mail	

## DID YOU KNOW THERE WAS A BEAUTY SALON IN THE VILLAGE?



Julie is based at her Home Salon in Parsonage Close, and has over 20 years experience in the Beauty Industry, specialising in:

- SKIN ANALYSIS EVENTS by the INTERNATIONAL INSTITUTE of ANTI-AGING • COLLAGEN STIMULATION THERAPY •
- ENVIRON ANTI-AGING FACIALS • CHEMICAL EXFOLIATION FACIALS • NON-SURGICAL FACELIFTS • ELECTROLYSIS •
- COSMETIC INJECTIONS – FILLERS AND MUSCLE RELAXANTS • INTENSE PULSE LIGHT (IPL) for PERMANENT HAIR REDUCTION • RELAXATION FACIALS • HOT LAVA SHELL MASSAGE • PEDICURES • SOAK-OFF GEL POLISH MANICURES (that last for weeks) • WAXING • TINTING • PAMPER PACKAGES • MAKE-UP PARTIES • PRINCESS PARTIES •

Prices and Special Offers at [www.beautyondemand.net](http://www.beautyondemand.net) or call Julie on 07770 881895



## SYCAMORE CARPENTRY & MAINTENANCE



Interior & Exterior Painting  
All work around the Home & Garden

Door Hanging  
Shelving

Laminate & Wood Flooring  
Kitchen Fitting & Worktops  
Fencing, Gates etc.



Contact Kev Harris  
Tel 01926 774795 Mobile 07769 551318

**Variety is the spice of life, so they say. And that's true of the MU.** We began last month with an Easter celebration of Communion for 6 of us then, a week later, went to another one at Harbury with 70 members there. For our 'Lady Day' celebration service our deanery joined with Southam deanery and 4 new members were admitted to the MU. About 50 of us went afterwards for a pub lunch to The White Hart at Ufton and enjoyed a very good meal and a natter.

The celebrating doesn't end there; at the end of April some of us went to the Cathedral to support Felicity Hawke who was being commissioned for a further 3 years as MU President for the Canterbury Province. Elaine acted as deacon to Bishop John. What did we do after the service? No, we didn't go out for lunch, but we did eat cakes brought by local members for all the visitors from the dioceses spreading from Truro to Canterbury in the east and Winchester to Derby in the north.

Talking of travelling, we are looking forward very much to our May meeting when Sue Hitchin is coming to talk to us about her experiences of working in Nepal with Peter. **'Hitchin' to Nepal' is on Tuesday 7<sup>th</sup> May at 2 pm at 81 Kingsley Road – see you there?**  
Jenny Lister Tel. 427922



Come and join us  
at Bishops Tachbrook  
Sports & Social Club,  
Kingsley Road

Each Thursday (term-time)  
9.30 – 11.00am

For any parents/carers with  
pre-school children

Any questions?  
Contact Lisa  
on 01926 334708



**Friends of Oakley Wood**  
**Diary dates**

**Guided Tree Walk** – Wednesday 15th May, beginning at 18:30. Led by Chris Hastie in conjunction with the Warwick Tree Wardens.

**Bug Walk** – Friday 28th June, 17:00 – 19:00. Led by the Invertebrate specialist from the WWT, Steven Falk

**Bat Walk** – Friday 26th July, beginning at 20:30. Led by Steve Trotter (WWT)

For all walks, meet at the gate near the Crematorium.

**NP, better for you,  
best for BT.**

# Notice Board

## Horticultural Society Plant Sale

The Plant Sale will be on the Village Green at **9am on Saturday 4th May** to coincide with the WI cake sale. We will be selling bedding plants at the usual competitive prices. All profits from the plant sale will go towards funding the Horticultural Show.

## Fete Meeting

A fete planning meeting will be held on Thursday 23rd May in church at 7.30pm. We will be putting together the final details- do please come if you feel you can help in any way. I can be contacted on 330050 if you need more details. Thanks, Desnee.

## Tuesday Club

7th May Keep Fit    21st May Line Dancing  
14th May Bingo    28th May Quiz

**NP, have your say  
& we'll all be  
better off.**

Next deadline for magazine items is 15th May for June's issue. Please send to [catherine.keen@btinternet.com](mailto:catherine.keen@btinternet.com)

## Operation Wallacea

I'm a year 11 student currently attending Aylesford School in Warwick. At the moment I'm trying to raise money for a school trip to South Africa with the company known as Operation Wallacea. Myself and a few other students will be spending 2 weeks in the wild and scuba diving on the coast, we will be looking at the effect of elephant populations on the savanna and the decline in their numbers. It's a trip of a life time and with my epilepsy I might never be able to do it again. Obviously this can't be covered by the school so we have to raise it ourselves, so before the fun begins we need to raise £2800 each. I can't pay for this all myself so anything anyone can give would help us, even prizes for raffles or anything along that line would be much appreciated. There will be several events coming up run by us, for example there is going to be a ball at the Hilton in Warwick with a 3 course meal included for £30 per person. I am also selling raffle tickets at a pound a ticket for which the prize is a car. Finally, there will hopefully be a stall at the church fete and there will be an event at the school such as a fete with BBQ and car boots.

**If you are interested in buying tickets or would like to donate money/raffle prizes please get in contact with me Joe Robbins on 07766564488 or [darkkiller1996@aol.com](mailto:darkkiller1996@aol.com).**

**NP, be prepared to make BT even better.**

**Bluebells and Cream Teas**

**Saturday 4<sup>th</sup> May**

**2.00p.m - 5.00p.m**

Peter and Sue Byrd's Garden  
2, Oakley Wood Cottages, Banbury Road  
(opposite The Guide Dog's Breeding Centre).

Take the opportunity of a relaxing walk in the garden and woods and see the bluebells and then indulge in a cream tea with homemade scones.

Raffle and some plants for sale.

In aid of Myton Hospice and  
St George's Church, Newbold Pacey.

Car parking space limited.

**Notice of Poll**

Don't forget to use your vote on Thursday 2 May to choose our next County Councillor. The polling stations will be open 7am to 10 pm. Details of the four candidates are on the Notice Boards.

**Allotment**

Half sized allotment plot available.

Contact Tony Wilkins  
314237.

**Team Leopard**

Calling themselves '**Team Leopard**' after our local pub, two regulars and the manager, Luke Moss, have been accepted and registered for the 10km Two Castles Run. This discipline takes us from Warwick Castle to Kenilworth Castle – hence the name – and is the 31<sup>st</sup> running of the event. This will take place at 9am on Sunday 9<sup>th</sup> June 2013. Eddie Cousins (73) and Luke Moss (31) will be taking part in aid of Myton Hospice and Dean Sanderson (31) will be running in aid of Cancer Research.

All three, who reside in the village, feel that they wish to help the medically less fortunate and wish to give something back to the community, especially Eddie who is recovering from breast cancer and has just last month gone through a prostate cancer operation from which he is in full recovery.

**Should anyone wish to sponsor the team they should contact Eddie on 01926 336360, Dean on 07525063193 and Luke at The Leopard on 01926 426466. Many thanks, your sponsorship would be gratefully appreciated.**





# Simons Systems



Available for all your computer requirements including:  
PC's & Laptops, New & used systems, Repairs & upgrades  
Virus/Malware Removal, Data back & Windows re-installation  
Upgrading memory/Hard drives/Rom drives/Graphics, etc  
Internet - modems fitted, wireless, networking.  
Any repairs or computer problems. ***No call out charge***

T: 01926 316 119

E: [sales@simons-systems.co.uk](mailto:sales@simons-systems.co.uk)

M: 07751 811 097

W: [www.simons-systems.co.uk](http://www.simons-systems.co.uk)

# C.G. MOTORS

Established for 33 Years

**\*ALL MAKES AND MODELS\***

Your local garage at Brookside Farm

First left past The Leopard

Bishops Tachbrook

01926 313256

**\*SERVICING\*MOT\*REPAIRS\*WELDING\***

**\*ENGINE DIAGNOSTIC CHECKS\***

**\*RESETTING OF WARNING LIGHTS\***

**\*READING AND ERASING FAULT CODES\***

**In the public session residents raised concerns about the regular encampment of travellers at Poseidon Way adjacent to Warwick Gates.** County Councillor Les Caborn said that the travellers have been moved on now. He further confirmed that the County Council are looking for 2 prospective traveller transit sites, one in north and one in south Warwickshire. The District's policy on permanent sites will be set out in the next draft of the Local Plan.

**Details of the Local Plan** will be published in early June; this will kick off a 6 week consultation period. Your Parish Council is arranging an open event at Bishop's Tachbrook school on **Saturday, 15<sup>th</sup> June from 12pm-3pm**. Officers from the District Council will be present to answer questions on all aspects of the Plan. Please put this date in your diary - more info in next month's magazine.

The **Neighbourhood Planning Group** are meeting every Wednesday at 7-8pm in the Sports & Social Club and will be covering a different topic every week. We would like as many residents as possible to contribute to this. To get involved just turn up. This plan will guide how Bishop's Tachbrook will evolve over the next 10/15 years.

The condition of **Warwick Gates' perimeter path** has been surveyed by District officers, and we are hoping that remedial work will be approved shortly. Likewise, Cllr. Richard Brookes is liaising with District Council officers to arrange for a replacement bench at the Bolingbroke Drive/Cicero Approach open space. The District will weed this paved area shortly.

County Highways now have the necessary funding to investigate options for the **Mallory Road crossing point** and speed reduction works. They will be meeting with councillors mid-May and we will then consult with residents.

**Allotments** The water meter has been inspected and Severn Trent are arranging for a boundary box to be fitted. Once this has happened they will then be in a position to look at correcting the bills the PC has paid.

Our **community marquee** is due to arrive 1<sup>st</sup> week of May; just in time for the Food Fest on 10 May.

Councillors are working with the County Highways to try and solve the issue of **verge damage along Kingsley Road**. We will keep you informed.

The **passenger assistant** is back on the school bus.

The Police have been made aware of the tree that was snapped off on Mallory Road. **Any vandalism like this should be reported right away by phoning Warwickshire Police on 101**. We are grateful to Sarah Ridgeway of Hinton's Nurseries who runs the Warwick Tree Wardens for donating a replacement flowering cherry; and to Paul for helping plant it.

Training has been organised for our 4 **Community Speed Watch** volunteers for the end of May. Traffic speed is one of the most frequent complaints we receive from residents, so if you do want to make a difference please put your name forward to me or Cllr Andrew Day.

Finally, engineering work will be starting at the **Greys Mallory and Europa Way roundabouts** to improve traffic flows once the road works at Morrisons have been completed. More details next month and on the major upgrade at Junction 12 on the M40.

The next Parish Council meeting is on **Thursday, 16<sup>th</sup> May at 7.30pm** in Bishop's Tachbrook Primary School. All residents are welcome to attend.



# LOCKE & ENGLAND

AUCTIONEERS & VALUERS

Established 1834

## Auction Every Thursday

Viewing Wednesday 12.00noon - 7.00pm & morning of sale from 9.00am

Bi-Monthly Antique & Collectors' Sales

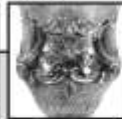
Regular Valuation Days

Specialist & Commercial Auctions

Valuations for Insurance, Probate & Family Division

Collection Service

ENTRIES INVITED FRIDAY, MONDAY & TUESDAY



12 Guy Street, Leamington Spa, Warwickshire CV32 4RT

01926 889 100 [www.leauction.co.uk](http://www.leauction.co.uk)



Do you run a business and are any of the following a burden?

\* Company accounts \*

\* VAT \*

\* Taxation \*

\* Payroll Services \*

\* Company Secretarial Work \*

Or do you need new systems and procedures?

**If the answer is yes, then contact us.**

FMS (Warwick) Ltd

114 Kingsley Road,

Bishops Tachbrook

Tel: 01926 314286 (Evenings)

or 07802 735491

[michael.jaggard@btinternet.com](mailto:michael.jaggard@btinternet.com)

(Sage & Inland Revenue Agents)

## C PULLIN AND SON

### Monumental Masons

Five generations  
of Quality Manufacturing  
and Service

All Aspects of  
Monumental Masonry



Showroom at: 19A High Street

Leamington Spa CV31 3AW

Telephone: 01926 426435

[www.pullinsmemorials.co.uk](http://www.pullinsmemorials.co.uk)

## **WILLOWBROOK COMMUNITY FARM – Open day 19<sup>th</sup> May, 10 -12am**

### **Want to grow your own veg?**

#### **Fed up of food all tasting the same and costing a fortune?**

#### **Come and get growing on a new community farm being set up just outside the village.**

With 6 acres of land secured, we can grow fruit and vegetables, raise sheep and pigs, goats, geese, chickens, ducks and bees. We need committed members to get this land worked and buy into becoming a shareholder to support the farm and ensure its longevity. Eventually we will all bring together a variety of skills and ideas to share in both the risks and benefits of the harvest and grow a variety of produce that would be very hard to achieve individually in back gardens or on allotments.

The benefits to members will include:

- Receive fresh food from a known source by way of a weekly food box.
- Fewer 'food miles', less packaging and ecologically sensitive farming with improved animal welfare
- Participate in all aspects of food production without having to take on sole responsibility for such a wide range of produce
- Influence the local landscape and encourage sustainable farming

Become involved in a community of like-minded people, with opportunities for social contact and learning new skills. Children will also be encouraged to have an active role in the project, not to mention the social BBQ's.

#### **Our Aims**

1. To provide good quality, local food to members
2. To build a community who work together to share in the risks and rewards of farming
3. To help members to eat locally and seasonally
4. To be good stewards of our land by managing and enhancing its natural resources

#### **What does this actually mean for you?**

We hope to build a community of approximately 20 households, where members come together to produce their own food using sustainable agricultural techniques. The majority of the day-to-day farming will be undertaken by us but we will organise two volunteer sessions a week, one on a Saturday and another in the week, for members to get involved with planting, harvesting, weeding etc or simply to visit and see the animals and what is happening on the farm. Members will be able to collect their weekly food share at these times. We will also organise a number of work and social days when we undertake specific projects such as erecting fencing or planting fruit trees. If you are unable to contribute with physical labour, there is a diverse variety of skills needed such as administration and accountancy so please feel able to contribute in other ways.

If you are interested in getting involved please contact Judith on 07875 759125 or Karen 07909 176797 or better still come down to the open day but please let us know. Places will be limited as there will be a limit to how many mouths we can feed this year! Email: [judith.mac@hotmail.co.uk](mailto:judith.mac@hotmail.co.uk) Facebook/[Willowbrookcommunityfarm](https://www.facebook.com/Willowbrookcommunityfarm)



## *Lizzy Pickles Catering*

### **Your Local Caterer**

For All Occasions  
Business Lunches  
Parties  
Weddings  
Christenings  
Funerals  
Buffets  
Training Sessions

Home of the Lizzy Pickles  
Sausage Roll

Most Items Homemade

Menus Tailored To Suit  
Your Needs

Lunches and Buffets from  
£3.95/head

Established over 10 years

To Discuss Your Catering Requirements call:

*Lizzy Pickles*

Tel: 01926 422438

Mob: 07917 036757

email: [lizzy.pickles@tiscali.co.uk](mailto:lizzy.pickles@tiscali.co.uk)  
Kingsley Rd, Bishops Tachbrook

# Moving home?

## **Need some extra space?**

Safe, secure storage for domestic and commercial uses

Flexible  
storage  
options

Discounted  
moving  
services

Van  
rental

Flexible  
opening  
hours

Packing  
materials\*

Daily  
storage  
rates

\*Free delivery to local area

**No VAT to pay on all our self storage rooms**

**SQUAB**  
STORAGE

Harbury Lane, Leamington Spa CV33 9QB

Tel 01926 882282

[www.squabstorage.co.uk](http://www.squabstorage.co.uk)



**We recently enjoyed a very interesting illustrative talk by Peter Bone, a member of the Industrial Archaeology Society and structural engineer with Warwickshire County Council, on the history and conservation of Chesterton Windmill.**

Sir Edward Peyto, Lord of Chesterton Manor House, built it in 1632/3 like a beacon on high land overlooking the village. It is possible that the windmill did start as an observatory, but there is no record that it was ever a working observatory.

There was great discussion at the time about new planetary systems and alternative cosmologies. A Jesuit priest hole is said to have existed in Chesterton Manor House, which could be an indication of Sir Edward's interest in the methodology and belief of the Jesuits' teachings. Galileo was becoming well known, scorning the Established Church's geocentrism, the belief that the sun, stars and planets are stationary and that the earth revolves around them. Therefore, it is possible that the mill was for a short time used as an observatory by the Jesuits.

Sir Edward was born into a well established Roman Catholic family, but became a staunch Royalist and fought for the Parliamentary cause in the English Civil War. He became a member of parliament and Governor of Warwick Castle. He was a mathematician, astrologer, and friend of Inigo Jones who designed Chesterton Manor House and with whom he travelled in Europe, noting the various windmill designs. He was influenced by Italian architecture. There is no record of who the architect of the windmill was, but it is thought it may have been Sir Edward

himself.

The mill tower, with a cap height 11m, was built on a shallow platform, using hard local limestone with a string course and detailing in sandstone. It is supported on six semicircular arches, on piers, said to be designed to allow the sun to shine through casting a moving shadow indicating the time of day.

The first floor houses the two millstones, the great spur wheel which turns the millstones and the hurst wheel which supplies their power; the second or hoist floor contains the brake wheel, main gearing and main parts of the winding system. The windshaft, wind direction indicator and winding stem are installed within the cap. WCC is now responsible for the mill's upkeep. In 2006 one of the sails fell off during an open day, injuring one visitor. The sails were removed for strengthening and replaced in 2007. Sails are usually constructed to turn in a clockwise direction, but those of the Chesterton Mill sails turn anticlockwise to fend off the devil, so the tale goes!

Mr. Bone demonstrated with his home-made models how the machinery worked. It was both a historically interesting and technically challenging talk for some of us. There was laughter too when his models seemed to want to take over and he had a little trouble in controlling them!

**Tuesday, 14th May,  
at 7.30pm  
Dr Colin Harris will explore the  
history of the ancient symbol  
*THE GREEN MAN***

Fully insured

Family-run Business

# JP Marshall & Sons

## Roofing Specialists & General Builders

- Re roofs • Repairs • Slating • Tiling • Flat roofs • Leadwork
- UPVC Fascias • Soffits • Guttering • Velux windows
- Pointing • Brickwork • Garden decking

[www.jpmarshallandsons.co.uk](http://www.jpmarshallandsons.co.uk)

01926 411660

07967 012114

Est 1968

# JP Marshall & Sons

## Roofing Specialists & General Builders

We are a fully insured small family run business, established in Leamington Spa in 1968 by Joseph Patrick Marshall, and now run by his sons Kevin and Michael.

At J.P Marshall & Sons we take pride in every job we do, and pride ourselves in achieving the best quality finish. We welcome customer or building control inspections.

We undertake all jobs from replacing slates or tiles, re-pointing or lead work, to complete strip and re-slate, re-tile or flat roofs, and new-build. We also undertake insurance work. We offer a friendly no obligation estimate service, and guarantee all work.

So for a fast, friendly, reliable and professional service to the highest standards, with no corners cut, do not hesitate to call J.P Marshall & Sons.

[www.jpmarshallandsons.co.uk](http://www.jpmarshallandsons.co.uk)

Tel: 01926 411660 Mob: 07967 012114

Kevin Marshall



## Litter Pick 2013

**A big thank you to Bishop's Tachbrook brownies and their helpers, who did a fantastic job collecting litter from around the village,** in particular the Meadow and surrounding area. On the front cover you can see Emma W, Grace S, Izzy S and Kirsty D (main picture) and Millie O, Jasmine U & Olivia P (inset picture) with the rubbish they have collected. Well done girls!



There was also a massive turn out at Warwick Gates (right). Lisa and Carol want to thank everyone, especially the Beavers, Cubs and Scouts and their parents, who swarmed over the verges and paths in their HighViz jackets and filled dozens of waste sacks... later collected by WDC. This exercise has a double benefit because it encourages WDC to contribute to other environmental initiatives in the Parish.



### Opening St Chad's in the summer

**Would you like to see your local church open during the week for prayer or just a quiet place to go and sit?** For this to happen we need a group of people willing to spend an hour or so in church, welcoming visitors, maybe offering them refreshments, really just being there. If we get enough volunteers then we can open St Chad's at least a couple of hours a day.

If you are happy to help please ring or email Elaine and if we get enough interest then a rota can be drawn up.

Please don't think that someone else will do it, if you can spare the time then do get in touch. It is your church. We want it to be more than just a pretty, Grade 1 listed building.

I look forward to hearing from you. Elaine

**NP, give it some verbal.**

## Tree of the Month - the Service Tree

**This tree has a slightly unusual name and is not one that immediately comes to mind when we think of British trees but it has an interesting history and influence, which we see even today.**

In days gone by before the use of hops the fruits were used to flavour beer and it is thought that the name 'service' might be a corruption of the Roman name for beer, cerevisia. It is sometimes known as the chequers tree, perhaps because its fruit has a slight chequered



pattern. Many pubs are named Chequers and it may be that the Prime Minister's country house is also named after the tree and its fruits.

The wild Service tree is often mistaken for a maple as it has large fat lobed leaves (below). In spring it has bunches of creamy flowers and these develop into round brown berries which are acidic to taste. In the past they were left to get over ripe and then they tasted a bit like



dried apricots. In the south of England they were sold as chequers and sometimes used as medicine.

It is difficult to grow from seed as they like very cold winters and just the right combination of sun and rain in the summer. They will grow easily from suckers and this is how most trees are produced.

There has been some dispute about whether the True Service Tree is a native to Britain, but some thousand year old specimens have been identified on cliffs near Cardiff and there is a story about one in the Wyre forest in 1678 which was burnt down

by a tramp 184 years later.

The True Service trees leaves (above) are similar to a Rowan having several pairs of leaflets on a long stem with one more at the tip. The flowers are similar to the wild service tree but bigger and they develop into pear shaped fruit which are edible when over ripe.

**We have at least one Service Tree in Bishop's Tachbrook. If you know where it is perhaps you know whether it is a Wild or True Service. I'm told wearing a sprig will keep away the gremlins!**

**NP, let's big up BT!**

## Reports

**There have been some worrying reports in the media about the effects of the very cold spring following a wet summer on all wildlife.** Barn Owls have suffered with starving birds being picked up and taken to rescue centres. There have been sightings of Barn Owls during daylight hours caused by the lack of small mammals found during their normal night time hunting.

**The Butterfly count for 2012 was very disappointing and Bees are facing more pressure from some pesticides.** Here are two websites, which will give more information and also advice on how we can help protect these important creatures:

[www.butterfly-conservation.org](http://www.butterfly-conservation.org)

[www.bumblebeeconservation.org](http://www.bumblebeeconservation.org)

Look out for the Brimstone butterfly (top right) which should be active now and the Orangetip (bottom right) soon to appear. I have seen bees busy collecting nectar even in the rain! I hope to have some flowers in my garden to attract bees and butterflies.



On the plus side John has reported the **swans at Heathcote Lakes** are preparing for mating.

**A pair of Mallards have made several visits to a Holt Avenue garden, laying an egg but abandoning it;** they are probably a young pair and inexperienced. There have been reports of **Bluetits** taking up residence in nest boxes and our **blackbirds** are getting friendlier.



### Steve Harvey's report

**The harder Winter has brought some interesting birds to feed in the garden, with Siskins, and Redpolls joining the resident Goldfinches.** A good many people seem to discourage the larger birds from feeding. I find it more interesting to let everything in; they all have to eat.

**A Rook has visited the bird table for the last three springs.** It arrives, fills its crop with moist bread, and then flies off to the Rookery several fields away. Each year it remembers our garden when it needs it the most. It causes no trouble to the smaller birds and is itself bullied by the Carrion Crow, which is far too wary to land on the bird table, so it waits in ambush.

**When the Magpies arrive the Woodpigeons always stand their ground, raising themselves up and pecking at the Magpies, who try to dodge the attacks, grab the food and flee.** This has gone on for the last few years so woodpigeons rule in our garden. The smaller birds are mainly on the feeders, so everyone is happy. On the whole if there is enough food easily available every day in different areas they all get what they need. The interactions are always interesting and sometimes surprising.

**The few sunny days we have had have brought out Brimstone butterflies, Bumble Bees and lots of Honey Bees.** Nesting has begun, Skylarks are over the village, and even ants are above ground. Can't be long before the Swallows are here.



60s, 70s, 80s, 90s

and  
**Today's Music**

*Perfect for all Occasions*

For More Info Call  
**07932 081583**



# FOAM

CUT TO ANY  
SHAPE & SIZE

Replacement sofa  
cushions a speciality

## JORDANS

14 High Street  
Leamington Spa  
CV31 3AN

Tel. No. 01926 421330  
[www.foamcushion.co.uk](http://www.foamcushion.co.uk)

# ALLENS AERIALS

TV AERIALS-DIGITAL AERIALS-  
STEREO AERIALS

Phone me last for price match.  
Support your local family man.

NO VAT  
OAP DISC  
BEST PRICES  
EST. 30 YEARS

07775684062

## Praying for our Community in May

A group of us at St Chad's wanted to have some structured prayers for our village and so we've developed a prayer calendar, which we hope will give direction to our prayer and so we offer it to those who live in our parish and who pray.

**This month we pray for:**

### Those who live in:

Dunstall Crescent  
Eglamour Way  
Farm Walk  
Harbury Lane



### Organisations

The Sports and Social Club, its members and Trustees  
Brownies, Rainbows and their Leaders  
All who are preparing for and taking exams

### Notable Dates

1st St Philip & St James  
3rd World Press Freedom Day  
5th, 6th, 7th and 8th Rogation Days  
9th Ascension Day  
12th-18th Christian Aid Week  
14th St Matthias  
19th Pentecost  
26th Trinity Sunday  
31st Visit of The Blessed Virgin Mary

**Please send any suggestions for  
Prayers to the editor.**

**NP, what's it all about?  
Numero Pruno, Nice  
Peas, Nifty Penguins,  
Northern Pandas,  
Never Promise, New  
Plan, Nice People?**

### Anniversary Quiz answers

- |            |              |
|------------|--------------|
| 1. Paper   | 6. Pearl     |
| 2. Wood    | 7. Ruby      |
| 3. Tin     | 8. Gold      |
| 4. Crystal | 9. Diamond   |
| 5. China   | 10. Platinum |

### May Rotas

#### Cleaning

- |      |                                       |
|------|---------------------------------------|
| 4th  | Desnee & Mervyn Fletcher              |
| 11th | Jenny & Peter Lister                  |
| 18th | Jo Shaw                               |
| 25th | Rod Smith, Julie Thomas, Jane Everett |

#### Assistant Stewards

- |      |                |
|------|----------------|
| 5th  | Graham Leeke   |
| 12th | Kevin Pantling |
| 19th | Debra Cokayne  |
| 26th | Huw Davies     |

#### Sidespersons

- |      |                               |
|------|-------------------------------|
| 5th  | Ray & Anne Allen              |
| 12th | Anne Kelly & Vera Vale        |
| 19th | Joan Alderman & Mac McGarrick |
| 26th | Sheila Hayward & Kath Reason  |

#### Coffee

- |      |                              |
|------|------------------------------|
| 5th  | Jean Coope & Mac McGarrick   |
| 12th | Fiona Meades & Joan Alderman |
| 19th | Gill Yarwood & Rod Smith     |
| 26th | Ros Pratt & Jane Everett     |

## **Ist Bishop's Tachbrook Rainbows**

Is your daughter aged 5,  
does she like having fun, playing games,  
making things and  
being part of a group?  
Then Rainbows could be for you.  
Rainbows are part of the  
Girl Guiding group.

If your daughter is interested  
email Jade at  
jadechoc@aol.com



## **Are you interested in being a Brownie?**

Bishop's Tachbrook Brownies meet on a  
Wednesday at 6pm till 7.30pm. If you are  
interested in being a Brownie when you  
are 7, please contact Caroline Loveday  
on 429082 or 07796 034371 or  
carolineloveday@sky.com  
to find out more.

### **Country Dancing Club**

2nd Thursday  
of every month  
8pm at Sports and Social Club  
Contact Julie Jaggard 314286  
All welcome!

### **Warwickshire Young Voices**

We rehearse Thursday Evenings during term time at Harbury Village Hall from 6.30-7.30pm. We take all children age 7-16 and offer a free trial session (normal subs £30 per term), We already have children from Bishop's Tachbrook who attend regularly and we would welcome more. Please go to [www.warwickshireyoungvoices.org](http://www.warwickshireyoungvoices.org) for more information.

### **Church Officers**

Vicar Rev Elaine Scrivens Tel: 426922

Church Wardens Andrew Day Tel: 889417 Linda Stevens Tel: 334812

Deputy Church Warden Rod Smith

Treasurer Vera Leeke Tel: 882675

Magazine Editor Catherine Keen Tel: 886980 [catherine.keen@btinternet.com](mailto:catherine.keen@btinternet.com)

Advertising Editor Pam Davies [btachbrookmagad@live.co.uk](mailto:btachbrookmagad@live.co.uk)

Magazine Distribution Barbara Baldwin Tel: 336822

This is a non-profit magazine supported by personal donations and contributions from St Chad's Parish Church Council and Bishop's Tachbrook Parish Council. All adverts are printed in good faith. The Bishop's Tachbrook Parish Magazine cannot take any responsibility for the contents of the advert or the services provided by the advertiser. Printed by: Cadman Printers Unit 7D Jenton Road, Sydenham Industrial Estate, Leamington Spa CV31 1XS Tel: 01926 423742

# FISH & CHIPS

The   
Leopard

## TAKE-A-WAY

TELEPHONE ORDERS ARE WELCOME!

**01926 426466**

**£6**

