

PARISH MAGAZINE

St Chad's



Issue 8 – October 2019

www.bishopstachbrook.com



Your magazine featuring news and views from within Bishop's Tachbrook Parish. A gentle mix of the chatty and Church.



Afternoon Tea at Mallory...

A speciality here at Mallory Court Hotel and Spa, our delicious Afternoon Tea will definitely indulge your taste buds. Try our freshly baked scones, delicate sandwiches, homemade cakes and pastries, served alongside fine teas poured in china cups.

We offer traditional, savoury and vegan afternoon tea options for £27.50 per person.

CALL TO BOOK ON 01926 330214

All menus are subject to seasonal availability.



What's in this month's magazine

Last month Kate, who organises the magazine distribution, delivered 250 magazines to houses on the new Heathcote estate. It took her nearly 3 hours.

Desperately seeking deliverers

We desperately need people to help out delivering magazines on the new estates.. You don't need to deliver 250!! If you could spare the time to deliver 10, Kate will deliver them to your door. Or you could take 100, get 10 people to agree to deliver them and you could bundle them up to distribute to your delivery team. Please help!!

As the number of households in the Parish grows and some complain about the parish being built over, it is interesting to reflect back on what people thought in times gone by. On page 7 there's an article from the September 1960

magazine complaining about the countryside being built over!

There's support for voluntary groups from the parish community fund

If you're involved in a local parish group who could do with a cash input read the piece on page 13. It outlines how you could apply for money from the parish community fund.

Those of you who regularly visit Oakley Wood should read the piece on pages 18 and 19 on the work soon to be carried out there.

Elsewhere there's the normal mix of the saintly and secular parish news - ENJOY YOUR READ.

CONTACT THE EDITOR

Email Keith on: BTparishmagazine@hotmail.com

Copy deadline for the November 2019 issue is 16th October

For **adverts** please contact Pam on: btachbrookmagad@live.co.uk

To put **dates in the diary** please contact Marion on: marismi913@aol.com

For **distribution issues** contact Kate on: kate.wellsted@btconnect.com

Church Officers

Vicar: Rev Elaine Scrivens Tel: 426922 Church Warden: Rod Smith Tel: 612242

This is a non-profit magazine supported by personal donations and contributions from St Chad's Parish Church Council and Bishop's Tachbrook Parish Council. All adverts are printed in good faith. The Bishop's Tachbrook Parish Magazine cannot take any responsibility for the contents of the advert or the services provided by the advertiser.
Printed by: Cadman Printers Unit 7D Jenton Road, Sydenham Industrial Estate, Leamington Spa CV31 1XS Tel: 01926 423742

Stewardship

By Revd. Elaine Scrivens

As most of you know, I spent 10 days earlier this year in Kenya. It was an amazing experience and one thing I will always remember is the generosity of the people. They might have been poor, they might not have had much but they were so willing to share what they did have. We never went hungry because sometimes we had 5 meals a day! Everyone wanted to share food with us and with their neighbours.

As I reflect on my visit to Kenya, it seems more and more urgent to think about our response to all that God has given us. At this time in the church year we celebrate Harvest which is fundamentally about thankfulness; we thank God for all he has given us in the past and we praise God for sustaining our lives in the present. But thankfulness is rather hollow if we don't have lives that respond in meaningful ways to God's bountiful goodness. I realise that our culture is at best apathetic to the idea that God might provide for our needs, especially as our appetite keeps growing at a fast pace.

One passage that I often return to at

Harvest is from the Epistle of James in the New Testament, where the writer says:

What good is it, my brothers and sisters, if you say you have faith but do not have works? Can faith save you? If a brother or sister is naked and lacks daily food, and one of you says to them, 'Go in peace; keep warm and eat your fill', and yet you do not supply their bodily needs, what is the good of that? So faith by itself, if it has no works, is dead.

James is convinced that we show what is in our heart by the generosity of our response to the needy person God places before us. Jesus tells a story about a wealthy man who could think of nothing better than constantly building a bigger and bigger empire. Sadly, as our culture becomes less connected to God and more self-absorbed, Jesus' picture is the way most people see their priorities. We seem to have become a "me" society where we tend to put ourselves first. That's worrying for us and also for our future.

I believe that the season of Harvest can be a time when we can stop for a moment and ask ourselves about our response to God's lavish generosity. Christians use the word Stewardship to define the way that we look after all that God has given us. This has implications for the environment. How much do we recycle? How much energy do we waste? How much food do we throw away? Are we still using too much plastic? It has implications for the things we purchase and the way we purchase them. Do we try and buy items that we know are ethically produced or sourced? Do we try and avoid companies known to avoid tax and treat their workers poorly? This Stewardship of our world has implications for the way we spend our money, use our talents and our time.

We need to ask ourselves the following questions: What time do I give to helping others? What little (or big) gestures can I do to support someone in need? Do I look for opportunities to be used by God to support others by giving to charity?

Let us remember the challenge of James that our talking the talk only means something if we walk the walk. Many of our young people are

showing increasing concern for our world especially the issue of damage to our environment and Climate Change. Our local school pupils have been "dubbed" eco rangers because of their recycling efforts and of course Greta Thunberg has been the spokesperson for many youngsters when she speaks of what needs to be done to halt Climate Change.

Many of us living in this parish are very fortunate compared to the rest of the world so let us seriously reflect at this Harvest time on how we can all reduce our environmental footprint and create a culture of change.

With every blessing, Elaine



Churchyard regulations

By Revd. Elaine Scrivens

This past weekend the Parish Working Party came along to St Chad's to help with our churchyard clean up. This is normally done by a few volunteers and we are grateful for their help. The upkeep of the Churchyard is the responsibility of the PCC and they are responsible to the Diocese of Coventry, who in turn have to follow the policies of the Church of England on churchyards. This amounts to 16 pages of regulations which can be found on the diocesan website at: http://www.dioceseofcoventry.org/images/document_library/UDR00024.pdf

It is not easy keeping to all these regulations but we are expected to do so by the chancellor of the Diocese. We do understand that for many people they seem very prescriptive but these are the rules and we ask that you try to help us keep them by not putting any sort of artificial flowers on a grave or any ornaments on the grave of a loved one.

The following is taken from the diocesan website:

Artificial flowers are not allowed except for Remembrance Day poppies and traditional Christmas wreaths and these should be removed after no more than 2 months. An incumbent, churchwarden or whoever is authorised by the Parochial Church Council (PCC) to look after the churchyard is permitted, indeed encouraged, to remove unsightly flowers from any grave and any items not permitted.

The following designs or features are not permitted: stone, concrete, metal, glass, plaster or plastic objects, such as model people, animals or toys, and to windmills or jangling trinkets designed to make a noise when the wind blows – the fact that this kind of object has become quite common in municipal cemeteries (particularly on the graves of children) does not make it acceptable in a churchyard.

Could I please ask that any artificial flowers or ornaments are removed by the end of October? Those remaining will be removed by the PCC.

Thank you so much for your cooperation, Elaine

Looking back

Excerpts from past magazines

Considering the rate of building in our Parish I thought this article from September 1960 was apt!

VANISHING BRITAIN

Britain is disappearing. Or, at any rate, the Britain our forefathers knew. It is becoming a suburb. Every year more and more acres disappear under bricks and mortar. Everyone is familiar with the remorseless manner in which towns spread out into the surrounding countryside. All of us in villages which, once tightly contained, are now becoming dormitory areas for some neighbouring city. It is said, indeed, that it is scarcely possible to fly from the south coast to the north of England without, for any long period, not seeing some sprawl of buildings below.

Nothing foreseeable is going to stop this progress, unless perhaps we begin to extend our towns vertically instead of horizontally and become accustomed to living in high blocks of flats. Even that is not likely to affect the sprawl of industrial areas which are part of our material prosperity. The fact remains that every new motorway driven across the countryside, that every time a new housing estate appears, that every time a new suburb is created, that every time a new building of any sort is laid down some more of the good earth has disappeared for good.

Basically, of course, the whole process is part of the enormous increase in our population. In 1805, the year of Trafalgar, there were less people in the whole of the British Isles than there are now in Greater London alone.

What are the consequences likely to be? One obvious one is that we will be driven further away from direct contact with nature. This is no small matter, it is no accident that the deepest thoughts of God have come from those in contact with nature and that systems of Godlessness, such as Communism, have been borne in city surroundings. However urbanised we become in this country it is the life giving powers of the good earth we depend on.

Parish Council News

By Matt Greene

One thing that never fails to shock me is that, even on bright, warm and sunny autumnal days, the temperature overnight can be bitter. As I write this we are due for a glorious day; however, driving to the train station this morning my car's temperature gauge showed 3 degrees! The Parish did look wonderful though - a stunning red sky, mist swirling in the fields and the stalwart silhouette of the older trees, no doubt surveying the changing landscape they find themselves in - maybe with apprehension, but certainly with at least a couple of centuries of perspective.

The Parish Council met in early September which gave us chance to welcome our two newly co-opted councillors, James (Jim) Connon and Martin Drew. Jim lived in Bishop's Tachbrook as a child and has returned, after many years serving his country, to one of the new developments. Martin lives in the village and has been involved with the Neighbourhood Plan.

Further to the requests of residents, bus shelter seats have been fitted in two bus shelters on Mallory Road - which have also been cleaned.

Cllr. Connon has brought to our attention that some of the new developments do not have public bins installed - this causes an issue for both litter and dog mess (which, as a reminder, can be put in any public bin). District Cllr. Norris agreed to look into this for us.

Thanks to Cllr. Bullen works on the storage building (next to the allotments) have commenced. The work should take around two months; please be careful of lorries delivering materials when walking in this area.

The toddler play area has signage explaining to residents that because of the raised surface there is a risk of tripping. We have asked for the ladder to be repaired and the surfacing to be patched. This patching is temporary as we are hoping that the play area refurbishment and expansion will soon commence. The planning application for the new equipment has received an objection from Sport England that we are trying to resolve.

Cllr. Brewster is continuing to manage the new website construction for us. If you have any photographs of the parish that you believe are suitable for displaying on this site please contact

the clerk.

The screeching hydraulic stepper on Warwick Gates has been reported for repair. Thanks to Cllr. Herbert the potholes on the Sports and Social Club driveway have been repaired – a temporary fix, the Parish Council will look at how a more permanent repair may be made as it considers its budget for FY21 in December.

We have received reports of children climbing fences to access the dangerous attenuation ponds on new developments - the Police have been informed.

A new county officer has been appointed to assist County Cllr. Les Caborn with our highway concerns – they will be looking at a position for the drop kerb on Farm Walk and the possibility of putting ones on The Lees and Warwick Gates. A safe way for pedestrians to negotiate the bank near The Leopard on Oakley Wood Road is up for discussion, as is the traffic calming, bus shelter and footpath on Harbury Lane.

We thank Cllr. Caborn for his grant to enable a scheme to be designed for Oakley Wood Road. Unfortunately our Police and Crime Commissioner, Philip Seccombe, was unable to grant funds towards this scheme - despite a very comprehensive application being

submitted by the Parish Council.

Following a number of branches breaking from the Leylandii trees adjacent to the Meadow path and Oakley Wood Road we requested advice from tree surgeons. The advice has been for the trees to be removed/ reduced in size – and we will proceed accordingly.

We understand that the planning application for the Secondary and Primary School, with 150 homes, will be discussed at a District Council's planning committee on 8 October. Full details can be found on the their website.

Councillors are monitoring the mole activity near the football pitch on the Meadow. The posts on the Meadow have been replaced. Thanks to all residents who report damage or broken equipment to us - with the parish growing it really does help us so please continue.

Monthly Working Parties continue and new volunteers are very welcome to keep our parish looking smart by cutting back vegetation, removing branches from trees, planting bulbs, etc. A great way to meet people and to help the community. Contact the clerk for details

Date of next meeting 10th October 2019 at 7.30pm.

Newbold Comyn survey now live

A new survey has launched today to help shape the future of Newbold Comyn.

The Sport, Leisure and Culture Consultancy (SLC) has been commissioned by Warwick District Council to look at the feasibility of new sport and physical activity facilities at Newbold Comyn following the closure of the golf course at the end of December 2017.



SLC have identified some initial options for new facilities following a survey carried out with residents and stakeholders in Summer 2018 which received over 3000 responses. The options are designed to meet local need, encourage residents to be more physically active and ensure a financially sustainable future.

The options include a redesigned par-3 golf course, driving range, a new adventure play area, an outdoor activities area including high ropes, low ropes and zip wires, an extension to the nature reserve and a visitor centre/café.

SLC will now undertake a more detailed study to explore the viability of these facilities, and as part of this the public are being asked to give their views on how they currently use the park, how often, and how useful they feel these new proposed facilities would be.

The survey responses, which form part of a wider consultation with stakeholders, will help to develop a draft masterplan for Newbold Comyn, to be considered by a cross-party councillor group.

As part of the consultation process, SLC will also be organising two public drop-in sessions where people can provide feedback, ask questions and make suggestions.

Friday 27 September, 11am to 7pm at Newbold Comyn Leisure Centre

Tuesday 29 October, 11am to 6pm at the Royal Pump Rooms

For further information and to complete the survey, visit

www.warwickdc.gov.uk/newboldcomynpark

The consultation will close on 10 November 2019

THERE ARE NO STOPWATCHES. NO FIRST PLACES. NO LAST PLACES. EVERYONE'S A WINNER



OAKLEY MEADOW MILE

AIM: IMPROVE HEALTH, WELLBEING AND SENSE OF COMMUNITY

WHO: EVERYONE, ANY ABILITY WELCOME

WHERE: BISHOP'S TACHBROOK SPORT AND SOCIAL CLUB



WHEN: FIRST SUNDAY OF EVERY MONTH 9:30 AM

COME AND JOIN YOUR COMMUNITY FOR THE OAKLEY MEADOW MILE! IT'S A ONE MILE JOG AROUND THE OAKLEY MEADOW DEVELOPMENT. WE WANT TO ENGAGE AS MANY BISHOP'S TACHBROOK RESIDENTS AS POSSIBLE IN A FRIENDLY AND SUPPORTIVE ENVIRONMENT. PUSHCHAIRS WELCOME!

THERE ARE NO STOPWATCHES. NO FIRST PLACES. NO LAST PLACES. EVERYONE'S A WINNER

Poetry please

In the cemetery by Thomas Hardy

'You see those mothers squabbling there'
Remarks the man of the cemetery
One says in tears, 'Tis mine lies here!
Another, 'Nay, mine, you Pharisee!
Another, 'How dare you move my flowers
And put your own on this grave of ours!
But all their children were laid therein
At different times, like sprats in a tin.

'And then the main drain had to cross,
And we moved the lot some nights ago,
And packed them away in the general
foss
With hundreds more. But their folks don't
know,
And as well cry over a new-laid drain
As anything else, to ease your pain!'

The British Motor Museum - Museums at Night Festival

1970s throwback

Looking for a good way to avoid the trick or treaters? Come join us on 31st October for a night of all things 1970s instead! The British Motor Museum is taking part in the national 'Museums at Night' festival to open up the collections to those who cannot come during normal opening hours. Come and meet the Archive Team and view press, advertising and sales material generated in the 1970s. You will have access to the Reading Room to view bookbinding by the Conservator, be able to see the restored 'K's from Longbridge's famous gate and watch 1970s motoring footage in the cinema.

Arrive from 5. 30, enjoy a hot & cold buffet and refreshments, view some of the iconic 1970s designed cars on display including the recently donated 1971 Morris Marina 1.3 deluxe, a Triumph Dolomite Sprint, Austin Maxi 2 and a Triumph TR6. There is also full access to the main Museum to explore at leisure and an exclusive 1970s themed tour with a costumed guide.

So come and join us for a fun and relaxed evening that is intended to appeal to not only motoring enthusiasts and those who love British motoring heritage but also to those with an interest in 1970s culture, iconic advertising & design, and those with an interest in gender studies, social history and diversity.

Tickets are just £10 per person. For visitors who hold a Gift Aid Annual Pass there is a £6 supplement for the evening to cover the catering.

GETTING READY FOR EASTER

It may seem more logical to be getting ready for Harvest 2019 than to be planning our school's Easter 2020 celebrations. But as we are always looking at new ways to make the Church Year memorable for children, this Autumn we have planted a monumental cross of daffodils beside our Peace Garden and every pupil has planted a bulb in the shape of a cross so that by Easter we should have a dazzling daffodil display. Thanks for all the spadework, Mr Hanson!



Of course, we ARE getting ready to give thanks at Harvest and will be celebrating with a service led by Y5 pupils at 2.00pm on Thursday 3rd October at St Chad's. Ks1 children will also learn about Harvest in Church on Tuesday 1st October when they bring their gifts to start the Harvest display.

THANKFULNESS

'Give thanks no
matter what.'

1 Thessalonians ch 5 v18

Is your local voluntary parish group short of funds?

Each year the Parish Council sets aside funds to support and enable community development within the Parish of Bishop's Tachbrook. The 2019/20 funding round will start in November with all applications having to be filed with the Clerk by 30th November. Incomplete documentation and late submissions will not be considered. Full details are available on the website or please contact the Clerk. Applications are invited from:

- Organisations with a long term commitment to a sporting, educational or cultural activity
- Organisations with a commitment to activities which benefit the local community
- Organisations, a local group of a national organisation or a new group whose purpose is to provide activities for the benefit of the group and local community
- Events for such organisations which demand substantial costs.

If you are interested in applying, you will be required to provide the following details:

- A written application outlining the aims/purpose of the organisation
- A detailed proposal of the project/programme for which funding is required and the benefits it will bring to the parish
- A copy of the organisation's accounts for the previous year
- An agreement to publicise the activity in the Parish Magazine
- Subsequent details of how the grant has been spent.

Written applications (by letter or form) should be submitted to Mrs Corinne Hill, Parish Clerk, Gaydon Fields Farm, Gaydon, CV35 0HF or via email to clerk@bishopstachbrook.com. Application forms are available from the Clerk on 01926 641220 or by email to clerk@bishopstachbrook.com



**Tired of Ironing,
Clothes Piling Up?
Then call in "The Iron Lady"
on 0780 859 4810**

I can offer either a Regular or One Off/Backlog service

Happy to collect/deliver

Cathy.ss10@live.co.uk



Do you run a business and are any of the following a burden?

- * Company accounts *
 - * VAT *
 - * Taxation *
 - * Payroll Services *
 - * Company Secretarial Work *
- Or do you need new systems and procedures?

If the answer is yes, then contact us.

FMS (Warwick) Ltd
114 Kingsley Road,
Bishops Tachbrook
Tel: 01926 314286 (Evenings)
or 07802 735491
michael.jaggard@btinternet.com
(Sage & Inland Revenue Agents)

Why not try our classic car wedding hire?

VISITING
QUALIFIED
CHIROPODIST

Mrs Lynn Hemmings
MSSCH, MBCHA

01564 784466



Simons Systems



Available for all your computer requirements including:
PC's & Laptops, New & used systems, Repairs & upgrades
Virus/Malware Removal, Data back & Windows re-installation
Upgrading memory/Hard drives/Rom drives/Graphics, etc
Internet - modems fitted, wireless, networking.
Any repairs or computer problems. ***No call out charge***

T: 01926 316 119 E: sales@simons-systems.co.uk
M: 07751 811 097 W: www.simons-systems.co.uk



Community CAFÉ

EVERY WEDNESDAY
10.30AM – 12.00

St Chad's Centre

Filter Coffee/Tea & homemade cake £2

Also available green tea, decaffeinated coffee & tea

Transport can be arranged if you would like a lift from the village,
Warwick Gates or Heathcote Park
Please contact Julie or Lisa on 01926 420826
julie_m_thomas@hotmail.com



Playgroup for 0-4 years

Thursday 9:30 – 11:00

St Chads Centre, Bishops Tachbrook

Bouncy Castle

Baby Area

Toys and activities



£1.50 per adult
50p per child
Term Time Only



Crafts

Nursery Rhymes

Tea/Coffee &
Children's snack

St Chads Centre
Mallory Road, Bishops Tachbrook



Bishop's Tachbrook

Pre-School

01926 313508

<http://preschoolnursery@welearn365.com>

Ofsted
GRADED
GOOD

Rated
"GOOD"
April 2018

Full day care
8.30am - 3.30 pm

History Club

Outing to Stokesay Castle

By Peter Lister

Those who lived in grand manor houses in the middle ages had to live with draughts. Certainly that was my impression when visiting Stokesay Castle in Shropshire with the History Group on its September outing. Even the owner and his family



could not escape them, though they were marginally better off in their living room - or 'Solar' as they called it - as they had a fire place and tapestries as covers for cold stone walls and to keep some of the draughts from whistling under the door. Certainly in the great hall, a place of communal living and eating, with its high and elaborate timber roof, there was little escape. Only the top half of the elegant windows were actually glazed as glass was hugely expensive in those days. The only protection from the elements in the bottom half of the window openings were shutters. 'Central' heating was literally provided by a wood burning brazier standing in the midst of the hall. Beyond a few feet it can have had little effect, other than to provide

a lot of smoke which had to permeate out through the tiles on the roof or the lower window spaces.

Stokesay Castle, which is near Craven Arms, was built by Laurence de Ludlow at the end of the 13th century as a fortified and moated manor house, its great hall flanked by two towers, the southern one very obviously standing proud as a place of refuge and defence in what could be turbulent times - the Welsh were not far away! It was not built as a castle. Indeed, it was not until the 16th century that its then owners, the Vernon family, began to describe it as a castle to give more status to themselves. Just before the outbreak of the Civil War in the 1640s an impressive half timbered gate house was built. Stokesay is regarded as one

of the best-preserved medieval fortified manor houses in England. Thankfully, over the centuries little was done to alter its original character and this is now safeguarded by English Heritage. Very definitely worth a visit.

Our thanks to Marion Smith for safely bussing our party to Stokesay, and back, on a journey through some delightful Worcester & Shropshire countryside, taking in the Clent Hills.

A Post Script to my talk on the Emperor Napoleon III

Following my talk in August about 'Leamington Spa's Royal Resident, the French Emperor Napoleon III', my wife, Jenny, and I decided to make a sort of pilgrimage last month to visit St. Michael's Abbey at Farnborough in Hampshire where Napoleon, his wife, the Empress Eugenie, and son, the Prince Imperial, are entombed. Every

Saturday, just before 3 pm, the gates of the Abbey are opened and visitors can make their way in for a guided tour of the church and the Imperial Crypt beneath. For those who appreciate organ music, the church has an organ built in the 19th century by the great Aristide Cavaille-Coll. The instrument has the very distinctive sound that he created. On the first Sunday of each month, during the summer period, the Abbey gates are again open just before 3 pm for those wishing to go to the church to hear an organ recital on this fine instrument. Details can be checked out on the St. Michael's Abbey web site.

On the way back home, we visited Windsor Castle and in St. George's Chapel there, to our surprise, we came across a memorial table tomb and effigy of the young Prince Imperial. Queen Victoria had it put in

the chapel for she seems to have been fond of him and had thoughts of him marrying her daughter Princess Beatrice. Sadly, in Southern Africa some Zulu assegais (spears) put an end to such hopes.



Oakley Wood Management—2019/2020

Restoring our native woodlands for people and wildlife

By Karl Curtis—Warwickshire Wildlife Trust

Oakley Wood is owned by Warwick District Council and is managed on its behalf by Warwickshire Wildlife Trust. The Friends of Oakley Wood works in partnership with both organisations to ensure the wood is managed sustainably for the benefit of local people and wildlife.

Oakley Wood was clear felled for the urgent national need of timber just after the second world war, where the British hardwood species such as oak and ash would have been used for building, pit props and fuel to get the nation back on its feet. Years later, to fulfil the continuing demand the wood was over planted with many non-native and native conifer species which we find still there today.

Whilst the clear felling would have no doubt had a serious impact on the local flora and fauna at the time, the wood has established as a pine plantation that meant that many types of wildlife couldn't return – where the tree species do not support our local wildlife. Of course some does thrive, but to ensure that Oakley Wood once again becomes majestic broad leaved woodland full of local wildlife, there is a need to restore it.

Fortunately this will be over a slower process than when it was clear felled

and regular visitors will be aware of the ride work that has been undertaken over the last 5 or so years, essentially returning the woodland edge corridors around the path network to let native species thrive again.

The next phase of work, starting this autumn, will be to thin the conifer trees out in certain areas by a third to promote the establishment of native species. This will be done by taking out around 33% of the trees across specific areas or “coupes” but also punching holes around 30m in diameter, creating small openings in the wood. These openings will start to provide age and structural diversity in the wood as woodlands that are the healthiest have a variety of stages of growth and a diversity of species – making sure they are resilient to disease and climate change and perpetuate for the long term. The map opposite indicates the work areas/coupes and the openings that will be created. Of note, this is indicative and officers will determine the best place on the ground and retain any trees or features of importance.

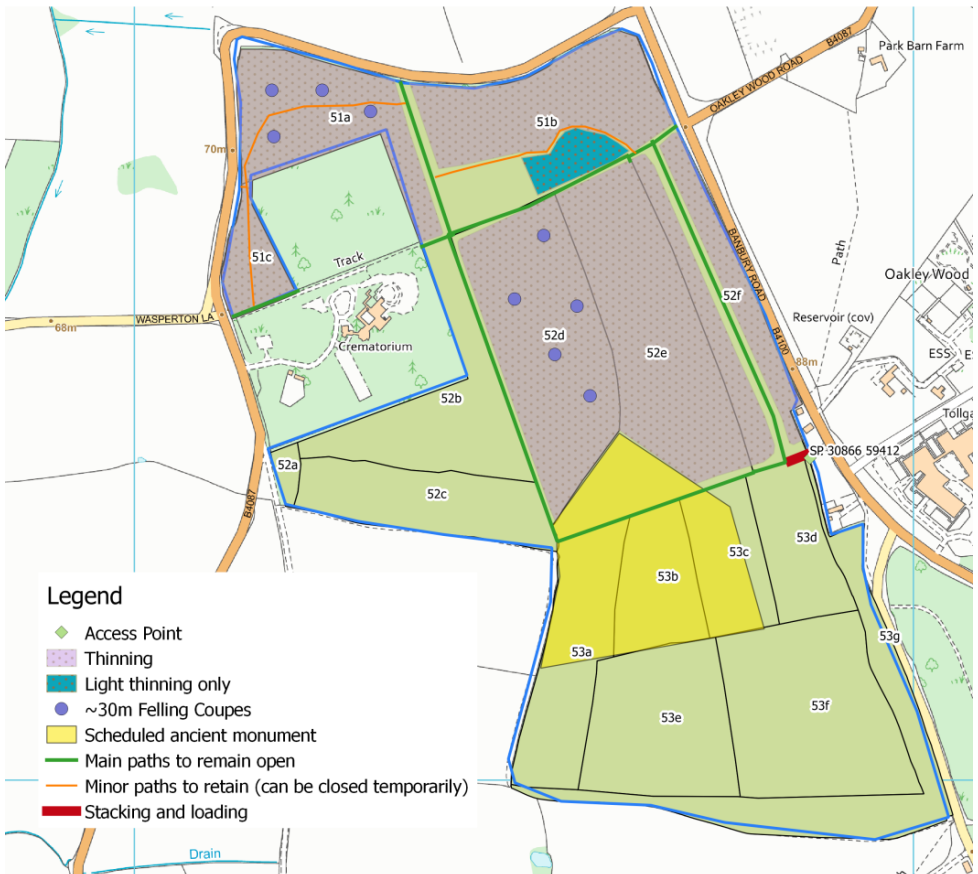
This work will be achieved by contractors and whilst woodland management can look destructive and

cause some temporary inconvenience around access, the woodland soon recovers. During the works the contractors will avoid using the path network wherever possible and any areas that are disturbed that people use will be put right at the end of the operation. We also ask visitors to take precautions and stay away from timber stacks and adhere to any warning signs.

The woodland management is essential for future people and wildlife

to come to enjoy it and play a vital role in our landscape – woodlands live in hundreds of years as opposed to decades. One of the biggest threats to woodlands is not managing them and therefore we appreciate your patience whilst this vital work is undertaken that will benefit people for generations to come.

If you have any questions, please do not hesitate to contact Warwickshire Wildlife Trust via our website at www.warwickshirewildlifetrust.org.uk




St Chad's Centre
Presents
Greek
Saturday Night
Fakeaway
12th October 2019
6.00 - 9.00pm
Pre book by 7th October

St Chad's Centre
 Church Hill, Bishops Tachbrook CV33 9RJ

Come along and work in teams to collectively
 make a lovely Greek feast and then sit down and eat together!

Pitta bread, hummus, tzatziki, traditional Greek salad, vegetable bulgar
 wheat, spinach and feta parcels and meatballs in a tomato sauce
 (pudding will be provided too!)

£20 per person - to book go to Eventbrite page online
 (<https://www.eventbrite.co.uk/e/greek-saturday-night-fakeaway-cooking-social-tickets-488282114643>)

For more details contact Anne Marie Lambert getcooking@hotmail.co.uk
This event organised to raise funds for St Chad's Centre





STEVE HAYNES
Qualified Professional Tree Surgeon

- Crown Reductions
- Hedge Cutting
- Tree Felling
- Full Arboricultural Insurance
- Pruning/Deadwood
- TPO Planning Consultants

Tel: 01926 624777
Mob: 07970 715006 / 07855 805644
email: stevehaynesforestryservices@btinternet.com






THE WARWICKSHIRE
LOG COMPANY
Fully SEASONED Top Quality
English Hardwood Logs

From fully sustainable FSC managed forests in Warwickshire and the Cotswolds
 Fully barn dried /Clean burn
 Very low water content complying with British Standards.
 Small or large quantities with delivery available
 We also offer chimney sweep service, fully accredited city and guilds.
Please contact Dawna Haynes for information & advice.
01926 624000 or 08755 805644
Castle View, Hareway Lane, Barford, Warwick, CV35 8DD



An estimated 150 people attended an open garden event at Tachbrook Mallory House helping to raise £2,000 for the St Chad's roof fund. On the hottest August Bank Holiday on record, three individual gardens were open and the history of this Grade 2 listed building, boasting a walled garden, was celebrated. It seems unbelievable that the house stood in Elizabethan times. The treasure hunt was a success for old and young, and ensured you did not miss anything. Warwick Gates WI provided the tea and cakes and the Ice creams were very popular. Jim Scrivens provided a background acoustics with back up from Ali Mirimadi.



A huge thankyou to the several volunteers who helped make the day a success but especially to Graham Leeke, Hassan & Jennifer Mirimadi and Sue & Bob White who worked hard to present their gardens.

If anyone in the parish fancies opening their garden in 2020 we would love to help you. It brings the whole community together and celebrates what is great about our parish. Obviously it could be another season. Please contact Sue White on 07833232244.

Parish Working Party - thanks

On Saturday 14th. September, the churchyard was a hive of activity, thanks to the Parish Working Party joining us for the morning. It was wonderful to have so much help- and what a difference it has made.

On behalf of St.Chad's can we thank you all for giving us your time.

Mervyn and Desnee .



Bishop's Tachbrook Events Group

Bonfire & Firework Night

1st November

From 7pm

Bishop's Tachbrook Meadow



There will be a small selection of food & rides available on the night.

Please note that there will be no parking on the Meadow and the club driveway will be closed, so please walk or make other arrangements. If you have mobility needs please contact Cathy.

We have been informed by the WDC EHO that we should not accept wood items, and will be burning pallets only, so please Do Not leave any on the carpark.

Cathy 07926 584202 or cathy.herbert@btinternet.com

Wellfit Flooring Limited

SUPPLY & INSTALLATION OF ALL ASPECTS OF FLOORING
QUALITY WORKSMANSHIP
FLOOR FITTERS WITH OVER 20 YEARS EXPERIENCE IN THE TRADE

Contact us on:
Tel No 07712 889506

Email: wellfitflooring@outlook.com

Website: www.wellfitflooring.co.uk



Free Quotations & Estimates.
Free Measuring & Home Visit Service.
Uplift & Disposal Service. Furniture Moving.



Images property of Wellfit Flooring Ltd ©

For further details and to view our Flooring Portfolio visit our website.

No Hidden Costs BUT No Corners Cut! We take PRIDE in our work!

Reduced Overhead Costs compared to most Retail Outlets - We pass that cost saving on to you!



Kitchens & Bathrooms



Quality Kitchens, Bathrooms, Bedrooms and Home Studies.

◆
Family Run Business, Established 1985.

◆
Made to Measure Replacement Doors

◆
Fully Fitted or Supply Only

◆
Our Own Employed Fitters



◆ **Diamond Interiors** ◆

◆ 01926 332288 ◆ www.diamondinteriors.net ◆

◆ 27 Hurlbutt Road, Heathcote Ind. Estate, Warwick CV34 6TD ◆

Eternal Flowers

YOUR LOCAL QUALIFIED FLORIST

CREATIONS FOR ALL OCCASIONS

Lindsey Robinson

Tel: 07521 455 879

Email: lindsey@eternal-flowers.com

www.eternal-flowers.com



FOAM

CUT TO ANY
SHAPE & SIZE

Replacement sofa
cushions a speciality

JORDANS

14 High Street
Leamington Spa
CV31 3AN



www.csldrivingschool.co.uk

01926 831713

07594810822

p.hancock_adi@hotmail.co.uk

Local independent driving school run
by Peter Hancock





Holistic Treatments by Kerry

Acre Close, Whitnash. Leamington Spa.

01926 427352 / 07890 444870

Aromatherapy from £25.00

Body Massage from £21.00

Hopi Ear Candles £18.00 (Children), £23.00 (Adults)

Indian Head Massage £28.00

Get Fresh Spa treatments from £26.00

Reflexology £16.00 (Children), £28.00 (Adults)

Special combined treatment offers*

Back Massage & Hopi Ear Candles £35.00 (Usually £44.00)

Back Massage & Reflexology £36.50 (Usually £49.00)

Gift Vouchers available

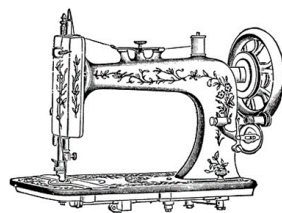
Free parking



Call for our latest offers and further information on any of the above treatments

* Combined treatment offer only applicable when taken together during a single appointment

Drop Dead Gorgeous Curtains.



Beautiful Bespoke Curtains, Cushions and Roman Blinds all made to measure.

Curtain alterations and restorations also undertaken.

All items are handmade by myself, a fully qualified soft furnisher.

From fabrics to poles, all your needs are catered for.

I'm also happy to work with customers own fabric.

Free measuring service, no obligation quotes and free curtain fitting and dressing.

Call Sharron for friendly and helpful advice, or to make an appointment on

07760395805 or 01926 718220

www.dropdeadgeorgeouscurtains.co.uk

Find me on Facebook and Instagram.



LOCKE & ENGLAND

AUCTIONEERS & VALUERS

Auction Sales & Valuations

Valuation, collection & auction service
of individual items through to complete
property clearances.

Call for a free no obligation collection
quote or email info@leauction.co.uk

SALE ENTRIES INVITED



12 Guy Street, Leamington Spa, CV32 4RT **01926 889 100** www.leauction.co.uk

Complete FLOORING

Carpets Vinyls Wood

- ** Supplied and fitted
- ** Sample swatches
- ** Free quotes
- ** Re-stretches/adaptions

(Will fit customers own Materials)

Call Dylan 07866 638674 / 01926 315116

Email: dylan126@btinternet.com

Nature Page

By Steve Harvey

7am, clear and bright as I glance out of the cottage window. A fox walks from behind the Cedar tree. Almost everything I see is by chance. It looked like the Cub that so far has refused to leave. I've seen it following the Dog Fox at a respectable distance on more than one occasion. Now it's almost full grown, sleek with a beautiful coat glowing 'foxy red' in the early morning sunlight.

I put out few sunflower hearts first thing for the local critters who always arrive for breakfast. The young Fox cautiously sniffed around then began to eat. An unsuspecting Squirrel clambered head first down the trunk of the giant Cedar tree. It stopped when it saw the Fox, who seemed more surprised and actually jumped when it saw the Squirrel. The young Fox turned and walked away down the lane. I know Foxes often cross the garden at night and we still seem to be Rat free. I'm more than happy to have the Fox family around so I hope the Hunt stays away!

Red Kites, once extinct around here, are becoming a regular sight, with long wings and the V tail a touch bigger than a Buzzard. One flew over the Sheep field, two over Lighthorne and four were following the plough near Shipston, all within a few days.

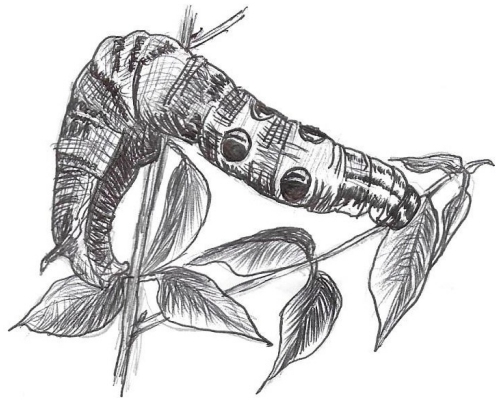
We are now up to 17 Hedgehogs released. I get reports of sightings and I glimpse the odd one. I think they have spread out in such a perfect habitat. Nights are getting chillier so I hope they are stuffing themselves to fatten up before hibernation.

I was told the tale of a Mallard Duck who decided to build her nest by a back door and tucked behind a very prickly *Pyracantha* bush well protected and hidden away from predators. Only one problem - it was a heck of a way from the nearest pond. The Ducklings hatched then began to explore a little. The people there watched as a moth flew past them. The Ducklings instinctively knew it was food. The 'Duck Race' began! After a frantic scramble one Duckling caught it

and it was gone. On the day the Mother Duck decided it was time to take her young to the pond she called them to her and as she waddled off they formed a line behind her. At one point she stopped and squatted to the ground. Maybe she had seen a Carrion Crow or a Magpie. Either one could easily grab a baby and fly off with it. All the Ducklings ran to the Mother then, surprisingly formed a tight bundle. They didn't look like Ducklings anymore. The people watching said they looked more like a cat! They acted on pure instinct changing their shape from fluff balls into a mass that could have been fur or feather and too big to pick up and fly away with, possibly a cat. Their Mother couldn't have taught them how to do that, more amazing instinct. Once the danger had passed the Mother stood up, regained her composure and the waddle troop continued, across the lawn, under a hedge, passed the woodpile, over another lawn, down a drive of several hundred yards to reach the pond. Thirteen Ducklings that couldn't yet fly had made it.

Well done Mum! I do like a happy ending.

PS, I had a call from Barbara. After a Hedgehog chat she told me about her Elephant Hawk Moth caterpillars. Now if you've seen one you would remember it. They are about the size of your little finger(I bet you just looked at your little finger!), brownish-green with four pretend eyes at the front just to make them look scared to predators. They usually feed on Ladies Bedstraw and other plants but also have a passion for Fuchsias. They will climb to the ground to pupate. Most Hawk moth caterpillars bury themselves but these stay on the surface in a cocoon. Next year Barbara I'd grow twice as many Fuchsias.



ELEPHANT
HAWK MOTH
CATERPILLAR

Women's Institute

By Anne Allen

Our poor speaker secretary has had a difficult year with people getting ill, double booking or just pulling out. She has done a brilliant job, always finding a replacement even in less than 24 hours. This month she managed to persuade Mr David Howe to step into the breach with his talk, 'A Brief History of Dictionaries'. David is an excellent speaker so something to look forward to.

We were told that English is a fairly recent language with Greek and French being spoken in the time of William the Conqueror. Robert Cawdrey compiled the first monolingual dictionary in English called Table Alphabetically in 1604. It consists of approximately 3,000 words including "dog - a common animal known to all". By 1685 dictionaries had 11,000 words included. " mouse - an animal well known". David told us about Samuel Johnson's Dictionary of the English Language published in 1755. It took over 8 years to compile has over 40,000 words. Authors such as Milton and Shakespeare introduced new words by joining two words together e.g. moonbeam and

submerge. The Oxford English Dictionary is the dictionary to end all dictionaries. Originally in 1928 it was published in 10 volumes with appropriately 15,490 pages and took nearly 70 years to complete. It was worked on by James Murray in a corrugated iron shed called a scriptorium lined with a filing system of 1,029 pigeon holes. He was even allowed a post box outside his home allowing him to speed production.. We were also told about all the other various forms of dictionary slang, cockney, etc. If you Google dictionary it's amazing what you can learn. David was a very entertaining speaker well worth listening to.

We then went on to discuss our WI events and outings. Not only are we off to the Cotswold Gin Distillery and Whichford Pottery but are going to enjoy a champagne afternoon tea at George Pragnell's. I know what you are thinking....those WI ladies are drinking again. The first trip is educational (we are learning how gin is made) and the second was a prize drawn at the county annual meeting. Well we couldn't say no could we? Oh

and our wine club meets again in October.

A group are off to learn about Sex and the Tudors. Here the speaker is Lesley Smith from Tutbury Castle and she's brilliant.

The forthcoming Serious Science lectures include: the Cambrian Explosion, Digital Autopsy, Future Medicine from the Past and Distant Stars and Their Solar Systems, Barge Art, making a repurposed article, Victorian Christmas decoration are also on offer together with a gold work embroidered card for the Queen's 94th birthday.

Walking netball is also proving very popular. We've even got goal posts now! This is a WI led community group. Everyone is welcome, age is no bar. It's held on Monday mornings 9:30-10:30 at the Sport and Social

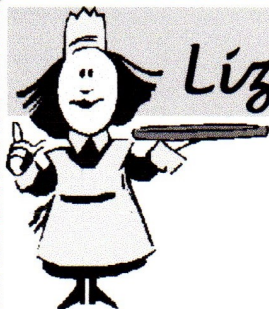
Club. So if you are able to walk come along and give it a try.

October is our annual meeting when we elect a new committee and president and conduct official business. An important meeting but we bribe members with a ploughman's supper with cider.

November our speaker is Jane Arnold who is telling us about Roman Women and their Food.

December is the Christmas Party where you could enjoy food, fun, and frolics. Entertainment is being thought about and food lists compiled. Crackers not yet bought but..... Why not come along and find out for yourself what a good crowd we are. Only £6:00 for a good night out. Give me a ring if you'd like to join us.

Anne Allen 424135



Lizzy Pickles Catering

Your Local Caterer

For All Occasions

Business Lunches

Parties

Weddings

Christenings

Funerals

Buffets

Training Sessions

**Home of the Lizzy Pickles
Sausage Roll**

Most Items Homemade

**Menus Tailored To Suit
Your Needs**

**Lunches and Buffets from
£3.95/head**

Established over 10 years

To Discuss Your Catering Requirements call:

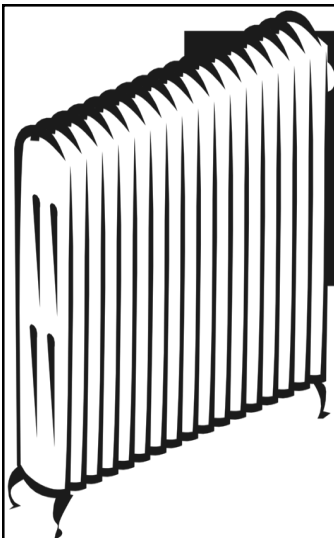
Lizzy Pickles

Tel: 01926 422438

Mob: 07917 036757

email: lizzy.pickles@tiscali.co.uk

Kingsley Rd, Bishops Tachbrook



ANDY VEALL

PLUMBING & HEATING



213264

TEL: 01926 315387

Gas Fitting • Central Heating

Plumbing • Bathrooms • Showers

Landlord's Gas Safety

Installation • Servicing • Repairs • Power Flushing



TOM RODGERS Tree Services

All aspects of
tree and hedge work

Stump
Grinding

Local authority
approved

Free
Estimates

Competitive
Prices

Member
of
Arboricultural
Association

Tree
Dismantling

24 hour
call out

Professional and Friendly Tree Care Service
www.tomrodgers.co.uk Tel. 01926 810716 or 07958794180

C PULLIN AND SON

Monumental Masons

Five generations
of Quality Manufacturing

and Service

All Aspects of
Monumental Masonry



Showroom at: 19A High Street

Leamington Spa CV31 3AW

Telephone: 01926 426435

www.pullinsmemorials.co.uk



Wag About Town Pet Services

I provide a friendly, professional and reliable dog walking and pet care service in the South Leamington area. I can walk your dog, feed your cat and look after your small furry animals, all carried out in your home.

Please contact me if you would like to chat about your requirements.

Tracey - 07598 240703

wagabouttownpetservices.com
wagabouttown.petservices@gmail.com



Vacancies at Ashorne Hill

Ashorne Hill is a residential Management Training and Conference Centre in the heart of Warwickshire.

Are you looking for a permanent job but are unable to work a full 40 hours per week? Ashorne Hill Management College are looking for flexible individuals to work in our housekeeping and catering departments, who are willing to work a minimum of 16 hours per week 5 days out of 7.

- Requires an outgoing personality and willingness to learn.
- Previous customer service experience would be an advantage.
- Excellent benefits and a rate of £8.33 per hour.
- Own transport would be needed due to location.

Please send CV to Sue.James@ashornehill.co.uk or contact her on 01926 488055.

We are always interested in recruiting local people. Please keep looking at our website for more opportunities within our organisation www.ashornehill.co.uk.



Ashorne Hill, Leamington Spa,
Warwickshire, CV33 9QW
01926 488000
www.ashornehill.co.uk

Moving Home?

Need some extra space?

Safe, secure storage for domestic and commercial uses

**NO
MINIMUM
PERIOD**

**Flexible
storage option**

**Discounted
moving services**

Van rental

**Flexible
opening hours**

**Packing
materials ***

**Daily storage
rates**

*Free delivery to local area

SQUAB
GROUP

Harbury Lane, Leamington Spa CV33 9QB
t: 01926 882282 www.squab.co.uk

 **ssa**
self storage
association
United Kingdom

FOR ALL YOUR GARDEN MACHINERY NEEDS



For further details contact us at
01926 494336 | www.murley.co.uk
Nelson Lane Warwick CV34 5JB



**MURLEY
GARDEN
MACHINERY**

Looking for a local builder?

MRC Construction

General Builder

Extensions, Alterations, Renovations

Building Maintenance

Patios

Conservatory bases

All aspects considered and reasonably priced

Contact Mark Rowland

Mobile: 07789 990616

Email: markrowland247@gmail.com

www.mrcconstruction.co.uk

www.checkatrade.com/MrcConstruction



Notice Board

MP Surgery

Matt Western MP will be holding a drop-in surgery in St. Chad's Centre on 12th October between 12 and 1pm. This gives you an opportunity to meet your representative in Parliament and discuss matters of concern.

Flu Jabs at Bishop's Tachbrook Surgery

If you are eligible for a flu jab the Surgery Drop In dates are:-

Tuesday 15 October 1.30 - 3.30pm

Tuesday 22 October 1.30 - 3.45 pm

Art in the Garden

Saturday 12th and Sunday 13th October between 11am – 5.00pm at Squab Hall Farm, Harbury Lane, Bishops Tachbrook, CV339QB

Art exhibitors, craft stands, homemade cream teas, other refreshments.

Admission free, wheelchair friendly and assistance dogs only.

World Polio Day

On 24th October Rotary clubs are arranging for public and historic buildings to be illuminated purple in many places in the world e.g. Sydney Opera House, Coliseum Rome and the Houses of Parliament.

A reminder that funds are still required to End Polio Now. Currently only two countries Pakistan and Afghanistan have reported cases of wild polio this year.

Many Millions of children have been vaccinated and the purple dye on their little finger records this . (Purple for Polio)

Rotary supported by the World Health Org and Bill & Melinda Gates Foundation aim to destroy the virus by 2020.

Please support this cause

Contact any Rotary Club or John Fletcher 01926 426001

Heathcote Park fund raising

On Saturday 7th September a fundraising coffee morning in aid of Warwick Myton and Leicester Lorus Hospice raised £1400.00 for these worthy causes.

Many thanks to the organisers and the generous support of friends and neighbours to make a successful morning enjoyed by all.

Bishops Tachbrook Sports & Social Club Entertainments

October

5th October – Distorted Decades

Distorted Decades are an energetic band who cover all music from 50's rock & roll through to current day and everything in between.

12th October – Rob Alton

Rob is a powerful, versatile, talented vocalist who can adapt to any style of music. He has been influenced by many singers from all different genres but has a real passion for good old rock!

18th October - (Friday) Anji Wylde

We have a special evening of Clairvoyance with International Medium Anji Wylde starting at 7.15pm

Members and none members welcome

Tickets £8.50 (available behind the bar)

19th October – Skrood

Classic rock covers band Skrood will be here playing all your favourite songs.

A night not to be missed.

26th Halloween with ATs Disco & Insomnia

Beginning at 5.00pm we start off with a disco for the kids then at 9.00pm Classic rock & pop cover band Insomnia are here to take us towards the Witching hour.

We welcome all Ghouls, Vampires Ghosts & Witches to our spooky spectacular.

Bingo Every Tuesday Evening

Eyes down at 8.00pm

Cash Prizes over 18's only

November

1st November – (Friday) Bonfire Night

Bonfire night is here again with all the usual stalls and a Disco in the function room the fun starts at 7.00pm

9th November - Ladies Night (Function Room)

We have a Ladies night in the Function room With a Drag Queen compare.

The show starts at 8.30pm.

Tickets £10.00 (available behind the bar)

9th November – Paul Jones (Members Lounge)

In the Members Lounge we have Paul Jones singing some classic Roy Orbison and Johnny Cash hits for you to enjoy.

16th November – Skittle Night

Come and have a game of skittles on our own Skittle alley fun for all the family.

23rd November - Simply Sarah

Multi award winning Sarah brings us music through the decades come round for a great evening of entertainment.

30th November - Quiz Night

It's the last Saturday of the month so Quiz Night is upon us with all of your favourite rounds of demanding questions.

Get yourselves a team together and challenge the Judge, a prize for every team.

Function Room Free To Hire

(T's & C's apply)

Bishops Tachbrook Sports & Social Club Function room is available for Parties, Christening's Weddings and Funerals; we offer a personal service and buffets if required.

Contact Us



www.bishopstachbrookclub.co.uk



enquiries@bishopstachbrookclub.co.uk



01926 421621/07855709051



bishopstachbrookclub

What's on in Bishop's Tachbrook

All activities at St Chad's Centre unless otherwise stated

Monday	Activity	Contact
9.30 - 12:00	Little Tinkers Soft Play – Drop in	Stacey Bowen - 07917 385747 or via Facebook
09.30 - 10.30	Walking Netball (at Sports & Social Club)	Kate Wellsted - 0771 3113464
14.00-15.30	Embroidery Class. £5.00 per session. Beginners to experienced embroiderers welcome.	Zara Day - 07717 371668 zara@rosemaryrose.co.uk Term starts 9th September
17.00-17.45	Martial Arts Class. Children/ Beginners up to 11 years.	Andy Shaw – andy@linkcube.co.uk
17:45 - 19:00	Martial Arts Class. Over 12 years and adults.	Terms start 2nd September
19:15 - 20:15	Children's cooking class age 8+	Anne Marie Lambert - 07956 955951 getcook- ing@hotmail.co.uk Terms start 9th September
20:30 - 21:30	Adults 18+ cooking class	
Tuesday		
09.15 - 10.15	New class Total Tone £5.00 or £6.50 for 6week book- ing. Bring own mat	Helen Jefferies 07841530789 HelenJFitness@gmail.com
14.00 - 16.00	Over 50s(at Sports & Social Club)	01926 313020
18.00 – 18.45	Vinyasa Flow Yoga Class £7.00 on entry	Bex Traynier bextraynier@gmail.com
19.15 - 20.15	Pilates for Cyclists	Helen Tudge - 07769 222524
Wednesday		
09:15 - 10:15	Pilates – drop in	Helen Tudge - 07769 222524
10:30 - 12:00	Community Café Drop in café for the whole community	Joan Alderman 01926 651643

12.30 -13.30	Sing and sign class for babies 6 - 14months £77.50 for 10 week term	Julie Messer Julie.messer@singandsign.co.uk
13.30 - 14.30	Sing and sign class for babies 6 - 14months £35 for a 5 week term	
17.00 - 18.00	Rainbows (at Sports & Social Club)	carolineloveday@sky.com 07796 034371
18.00 - 19.45	Brownies (at Sports & Social Club)	
19:00 - 20:00	Tai Chi – beginners class	Peter Fletcher 07487 685679
20:00 – 21:00	Tai Chi – intermediate class	
21:00 – 22:00	Tai Chi - advanced class	
Thursday		
09:30 - 11:00	Tachbrook Tinies - drop in	Tachbrook Tinies on Facebook
11.30 – 12.30	Atomic Dance for Toddlers Ages 2+	Ellie Rowe - 07392 348155
16:00 – 17:00	Mind Over Matter Yoga - children's yoga classes.	Nikki Francis - 07837 370148 nikki@takeitfrommummy.co
18.20 - 19.10	Fitness Pilates	Bev Hall on 0774 004225 or w60bev@gmail.com
19.30-21.30	Salsa Cubana in Rueda de Casino Beginners: 7.30pm Intermediate: 8.30pm	Emy Stoiescu on 07796 214877 or www.providanse.co.uk
Friday		
18:00 - 19:00	High Intensity Circuit Class Term starts 30th August	Mari-Carmen Sanchez-Morris on hel-lo@maricarmenfitness.
Saturday		
First Saturday of the month - 09.30 - 11.30	Little Tinkers Soft Play	Stacey Bowen - 07917 385747 or via Facebook
Third Saturday of the month - 13:30 – 15:30	Craft afternoon – free drop in craft session for children. -	Elaine Scrivens

What's on in Bishop's Tachbrook

October's one-offs

Thursday 3rd 19.45, **WI, AGM**, BT School, 01926 426797

Monday 7th and Monday 28th 11.15 to 11.40, **Mobile Library** Church Lees

Tuesday 8th 19.30, **History Group, Ellie Hedger Music and Martyrdom**, St Chad's Church, 01926 885938

Thursday 10th 19.30 **Parish Council Meeting**, Heathcote School
parishclerk@bishopstachbrook.com

Saturday 12th 10.00 –12.00, **Churchyard gardening**, St Chad's Church, 01926 330050

Saturday 12th 18.00 - 21.00, **Saturday Night Fakeaway**, St Chad's Centre, Marie Lambert 07956 955951,
getcooking@hotmail.co.uk

Saturday 19th 09.30 to 12.30, **Parish Working Party**,
keith@bishopstachbrook.com

Wednesday 23rd 10.00 –12.00, **Churchyard gardening**, St Chad's Church, 01926 330050

November's one-offs

Saturday 1st 19, 00 **Fireworks Party**, The Meadow, cathy.herbert@btinternet.com

Thursday 7th 19.45, **WI, Roman Women and Food**, BT School, 01926 426797

Saturday 9th 10.00 –12.00, **Churchyard gardening**, St Chad's Church, 01926 330050

Tuesday 12th 14.30, **History Group, Thomas Oken Explained**, St Chad's Centre, 01926 885938

Thursday 14th 19.30 **Parish Council Meeting**, St Chad's Centre
parishclerk@bishopstachbrook.com

Saturday 16th 09.30 to 12.30, **Parish Working Party**,
keith@bishopstachbrook.com

Monday 18th 11.15 to 11.40, **Mobile Library** Church Lees

Wednesday 27th 10.00 –12.00, **Churchyard gardening**, St Chad's Church, 01926 330050

What's on in St Chad's

October 6th 10am **Harvest Festival** in Church followed at 12:15pm by a Harvest Lunch. This is a shared meal. Please do let us know if you are coming so that we have enough food. Everyone is welcome.

October 10th **Film Night**. 7:30 St Chad's Centre

October 15th 6:45pm **Wave of Light**. This is an opportunity to join with bereaved parents, families and friends around the globe to commemorate all babies who sadly died too soon by lighting a candle. Everyone is welcome to come along to this quiet, reflective time.

November 9th 10. – 12pm **Craft Fayre** in St Chad's Centre. Lots of stalls selling a variety of items. Your chance to buy your Christmas Gifts. Children will be given an opportunity to write a letter to Santa and we are hoping that he might pop in to pick them up! Refreshments will be available.

December 8th John Kirkpatrick returns to St Chad's Church with his excellent **Carolling and Crumpets**. Tickets £15 available from 07766083666



FRIDAYS

FISH & FIZZ

★ FISH & CHIPS FOR TWO FROM JUST £20
 ★ HOUSE PROSECCO £15 A BOTTLE
 ★ NEW À LA CARTE MENU | NEW VEGAN MENU

EVERY FRIDAY AT THE LEOPARD www.theleopardinn.co.uk
 Oakley Wood Rd, Bishopstachbrook, CV33 9RN 01926 334829

St Chad's Centre
At the heart of your Community

Are you looking for a venue for a party, regular class or corporate event?

Our village centre is suitable for a range of uses

The main hall accommodates up to 150 people with:

- state-of-the-art sound system
- AV equipment
- Wi-Fi
- fully equipped kitchen
- smaller rooms are also available

Rate: **Only £20 per hour with discounts for Parish residents and regular hirers**

For more details and to check availability visit:
www.bishopstachbrook.com/st-chads-centre
 or email: stchadscentrebtc@gmail.com

 For up-to-date news & upcoming events:
www.facebook.com/stchadscentre

Warwick, Coventry, Rugby,
Banbury, Leamington Spa,
Stratford and surrounding areas.

Shuttercraft®
Making light work



Transform your space

Shuttercraft Warwick fit premium window shutters from the UK's leading supplier. Whether you prefer classic or contemporary styles, with Shuttercraft Warwick you're guaranteed to find something to fall in love with.

Call **Martin** at **Shuttercraft Warwick**
today on **01926 321 929**
or visit **www.shuttercraft-warwick.co.uk**

S
CRAFT®
PROUD
TO FIT
S:CRAFT
PRODUCTS