



PARISH MAGAZINE ONLINE

Issue 1 February 2021

www.bishopstachbrook.com



Your magazine featuring news and views from within
Bishop's Tachbrook Parish. A gentle mix of the chatty and Church.

What's in this month's magazine

Start here Precis of what you'll find in the magazine are shown on this page. Click on the title (underlined) to go to the article.



You want me to GIVE THINGS UP for Lent?!

A reflection on Lent and how to approach it—some handy tips!



Nature Page **Foxes** and a small army of different birds feature in this month's slice of our local wildlife



Heathcote Primary School Still doing amazing things for our children despite everything that's going on!



Country Park An update on what's going on with the formation of our new country park



Green fingers Vegetable growing tips for budding gardeners

Parish Council News

Covid, tax, allotments, fly tipping, dog poo, councillor recruitment
Sports & Social Club parking street lights and community group funding all feature



Thank you Elaine a heartfelt farewell to our vicar



Tachbrook Residents Action on Climate Change—TRACC

A look at waste and how we, as individuals, can alter the planet



WI The indefatigable WI carry on regardless having fun and helping out



Leamington's lost stations

A new series by Peter Lister on the birth and subsequent death of some of Leamington's lost railway stations.

Poetry please Two poems to hopefully bring thought and joy



Winter wonderland Both the front and back covers are pictures taken during the recent snowy weather by Silvena Toncheva. There's also a 2 page spread of her great photos

Adverts Many of our loyal advertisers will be going through a hard time at present, please use them in preference to those who don't advertise with us. Click on the links below to see who can provide you with a service: List of all advertisers; Sports and Social Club; Food & Drink; Financial Services; Funeral Services; Garden Services; Health & Beauty; Home Improvements; Trades; Miscellaneous

You want me to GIVE THINGS UP for Lent?!

By Revd. Elaine Scrivens

Lent – traditionally a season of 40 days of penitence and fasting. I don't know how you feel about Lent this year, but I feel as though I have done nothing *but* give things up for the past year.

I've given up living with my husband and son, hugs, holidays, dinners with friends, weddings, singing, Christmas with my family: I could go on, but I don't need to, because you all know exactly what I mean.

The idea of giving anything else up just makes me want to weep- or spit feathers - maybe both.....

BUT if we think of Lent as a time when we **turn away** from the things that distract us from God's love; and **turn towards** the things that reconnect us with God's love, that might be more helpful. Here are some things which might help you to do that:

GET OUT...

Spend time outside every day if you can, even if it's just a few minutes, and jot down in a notebook or journal what you see, and what you are thankful for. For me, as I hear a bit more birdsong, and see a few more green leaves, and watch the early shoots of bulbs popping up, there is a real gladness in the coming of Spring. I am reminded of

*You cannot
be serious!!*



God's goodness and my own part in creation and it lifts my heart. As my lovely grandmother used to say, "it's staying early later now, soon be spring" (You have to say it with a Welsh accent!)

GET WRITING...

You might want to get in some writing paper and go through your address book. Try writing a letter or an email every day to someone you care about, maybe somebody you haven't been in touch with for a while. Thank them for their part in your life as a friend or neighbour. If you pray, pray for them.

GET THE KETTLE ON...

Most of us drink tea or coffee most days. Can you **switch** to a brand of tea or coffee that is organically produced and Fairly traded, so that every time you brew up you are helping a farmer in a developing country to live sustainably on a decent wage? I know when I visited Kenya many of the farms were in Fairtrade collectives.

GET A BIT OF PEACE AND QUIET...

If you are not already in the habit of praying, try this: After you've had your breakfast each day, find a quiet spot, light a candle, and just spend five minutes quietly. It doesn't have to be complicated. Ask God to be with you through the day. Ask for God's help in knowing His presence. Ask for peace in your heart as you begin the day. Say the Lord's prayer or a prayer that's meaningful to you. Even if you don't

pray, taking five minutes to be still, to reflect on the day ahead will be beneficial. If you are home-schooling and you have to hit the ground running, then how about a relaxing bath after the children have gone to bed. If you pray, thank God for the day, hand over your frustrations, and ask for a peaceful night's sleep

This Lent, be kind to yourself, take things gently, remember that God's love is all around you. As I often say to people, if you don't believe in God, God believes in you. Whatever your beliefs, whatever you do this Lent, **don't give up.**

Blessings

Elaine

NEW CONTACT DETAILS

For Marriages, Baptisms and Funerals and general enquiries please :

e-mail stchadsbt@gmail.com

Phone: **07999127260**

Our Church Warden: Rod Smith can be reached on 612242

CYCLE OF PRAYER

Praying for our Community

In February we are praying for those living in

Beale Close

Biffin Way

Bishop's Close

Bolingbroke Drive

Bradford Close

Butler Close

If there is something or someone you would like us to pray for please let Elaine, our Vicar, or a member of the congregation know.

The other side of St Chads

By Revd. Elaine Scrivens

I am putting together Lent bags which people can use to help them through Lent. If you would like one, they will be ready by Ash Wednesday. Drop me an email or ring 07766083666 and I will deliver one, safely to you. They will have been put together and left for 72 hours before delivery and I will wear gloves and a mask. Other ideas will be in the files of the St Chad's Church Facebook group.

<https://www.facebook.com/groups/235844957774415>

So far there is a 40 day challenge, a 21 day Lego challenge and a Bake your way through Holy Week. If you can't download or print them but would like a copy just let me know and I can print them and leave them in the church porch before I go. My new date for departure is 28th February.

All our services are online either search YouTube for St Chad's Church Bishop's Tachbrook or follow this link.

https://www.youtube.com/channel/UC_jljCELLJaV7M6bn4MDYBA

God bless

Elaine

Thank you

Thank you for those who sent cards, good wishes and gifts when they thought I was leaving on January 10th! I will now hold my last service on February 28th, probably online, and leave Tachbrook on 28th March.

Thank you for the wonderful painting of the church I received from the congregation, to Kate Wellsted and the PCC for my scrapbook (do you have any pictures I could include!) To Bishop's Tachbrook WI for a beautiful plant and brooch. Finally, to Maralyn Brown for organising the collection to which many of you contributed. Thank you for your generosity. I'm hoping to put the towards improving our garden in Redcar. I will supply pictures next month along with my Farewell to Tachbrook.

E xx



Goodbye Elaine

By members of the Parochial Church Council

Elaine has been our vicar for just over 10 years. She will be retiring and leaving Bishop's Tachbrook soon. She has been a lively and committed member of the community, giving her time unstintingly. Her post has only been part time, but that hasn't stopped her from being available to give outstanding pastoral care at any time.

Her sermons have always been thought provoking with personal comments that illustrate her point. We cannot forget the Family services, Carols at the Leopard and Carols on the Green.



The Film Club and Children's crafts on a Saturday afternoon were her initiatives. She also supported the community cafe, supplying the coffee until the cafe could stand on its own.

Elaine was a member of the WI and took part in their activities including the gin tasting, hula hooping and the Christmas concert.

Every week, Elaine lead an assembly at the school and took part in many activities there and at the church with the children.

The loss of the lead from the church roof was a big blow, but Elaine rallied the fund raisers and even though there were many problems once the roofers began their work, she can leave knowing that the church roof will survive another 80 years.

Covid put an end to lots of activities and even church services, but Elaine still managed to reach out to people through online services, which were watched far and wide.

We also won't forget her nails! Always beautifully done, often in liturgically appropriate colours.

Many thanks to Jim for lending Elaine to us and his guitar playing.

Elaine will be missed. We wish her a long and healthy happy retirement.



Parish Council News

By Matt Greene

I doubt many of us have had the start to the year they had hoped for; the resurgence and mutation of the virus has meant we have once again had to retreat into our houses not just to wait out the virus but also the cold winter. All we can do is hope and pray that the vaccines will make a significant difference to the relentless nature of this virus and help us to get back to some level of normalcy as the summer approaches.

Information regarding vaccination centres can be found on Warwick District Council website or Warwickshire County Council website. There are also links from the Parish Council website to these sites. Community transport is available for attending vaccination centres. If you are offered the vaccine, please do take it up.

Any Covid grant information for businesses and community groups should be available on the District Council website, there's lots out there so do check them out.

The first meeting of the new year saw councillors agreeing a very small increase to the precept for 2021/22, this equates to approximately £2.25 annual increase for a Band D property. This increase will allow us to keep our current levels of service for grass cutting and maintenance but also

address issues like extending the path to Oakley Wood, installing notice boards on the new developments, finishing the play area, and adding surfacing for the outdoor gym equipment to name a few. No tax decisions should be taken lightly, and I want to reassure all residents that a robust discussion on the level increase took place and that these funds will be used, as soon as possible, to improve the lives of as many residents as we can.

Ownership of the new allotments at Oakley Meadows is moving very slowly but, following a meeting with the developer's new adoption manager, we can report some work has taken place on improving the plots. Unfortunately the legal paperwork doesn't appear to have made any progress. If you are interested in an allotment plot please email the clerk. Demand is high. Our solicitor is currently drafting tenancy agreements for all of our allotment sites. Please note that there will be no parking and no sheds.

The Sports and Social Club driveway design has been discussed with the Club and approved. We must go to tender. This should take place in the next couple of months.

Two residents expressed interest in becoming councillors but sadly neither has been co-opted. We still have one

vacancy so if you are interested please do contact the clerk. We are going to take steps to publish the vacancy as widely as possible, but if you can think of someone who you believe may be interested please do put them in touch.

District Cllr. Day is pursuing the sewage issues within our parish with Environmental Health and Severn Trent. Please do be careful if you walk past The Leopard on Oakley Wood Road after considerable rainfall as the manhole cover can lift up and raw sewage can spill out. The Parish Council have also raised this matter with Severn Trent over the last few months, but we are grateful that Cllr. Day is pressing the company into addressing the source of the issues (not just the symptoms).

There has been increased fly-tipping throughout the Parish during the pandemic, if you see any evidence of this please do report it to Warwick District Council.

Due to the ongoing pandemic, the responses from the Country Park consultation will only be available electronically. The link will be advertised on Facebook and the parish website.

If you are a community group looking for funding please do apply to the Parish Council. We have a small pot of money that we normally allocate to local groups. Whilst we appreciate

that you can't meet at the moment we hope that in the summer this could have changed. If you are looking to start a new community group you could be eligible for this grant. Please do contact the clerk.

There is always confusion around who is responsible for street light maintenance. For Bishop's Tachbrook village it is Warwick District Council. Street lights not working can be reported via their website. There should be a number on the street light column which helps the engineer to locate the light. Please jot this down and, if you are able, report it on-line.

Finally, a recurring plea to the small minority - please pick up after your dogs - we all have to live here and we all deserve to do so without that (often dangerous) inconvenience.

Our next virtual meeting is on Thursday, 11th February at 7pm. If you wish to join please contact the clerk.

BISHOP'S TACHBROOK PARISH COUNCIL

Clerk to the Council: Mrs Corinne Hill

Gaydon Fields Farm, Gaydon CV35 0HF

Tel: 01926 641220 email: clerk@bishopstachbrook.com

1st February, 2021.

IS YOUR LOCAL VOLUNTARY VILLAGE GROUP SHORT OF FUNDS?

Each year the Parish Council sets aside funds to support and enable community development within the Parish of Bishop's Tachbrook. The 2020/21 funding round will start in February with all applications having to be filed with the Clerk by 4th March. Incomplete documentation and late submissions will not be considered. Applications are invited from:

- Organisations with a long term commitment to a sporting, educational or cultural activity
- Organisations with a commitment to activities which benefit the local community
- Events for such organisations which demand substantial costs

Applications are welcome from local organisations, a local group of a national organisation or a new group whose purpose is to provide activities for the benefit of the group and local community.

If you are interested in applying, you will be required to provide the following details:

- A written application outlining the aims/purpose of the organisation
- A detailed proposal of the project/programme for which funding is required and the benefits it will bring to the parish
- A copy of the organisation's accounts for the previous year
- Agreement to publicise the activity in the Parish Magazine

Subsequent details of how the grant has been spent

Written applications (by letter or form) should be submitted to Mrs Corinne Hill, Parish Clerk, Gaydon Fields Farm, Gaydon CV35 0HF or via email to clerk@bishopstachbrook.com. Application forms are available from the Clerk on 01926 641220 or by email.



TACHBROOK COUNTRY PARK

a new open space for our community

Warwick District Council, has acquired land of sufficient scale and public accessibility to develop the district's first country park. Stretching across 56 hectares between Bishop's Tachbrook, Leamington Spa and Warwick, Tachbrook Country Park will become one of the largest green spaces in the district.



The new country park is located in an area which is identified in the Local Plan as needing additional open space to serve the growing communities. Once complete it will connect the housing developments to the new primary and secondary schools at Oakley Grove, Community Stadium and other public amenities.

The story so far

In November 2019 the public was invited to submit their ideas and feedback on their current use of local parks and the features they would like to see in the new open space. The responses received were used to shape the draft masterplan in collaboration with Bishop's Tachbrook Parish Council.

In March 2020 the draft masterplan was made publically available on the Council's website to give local people and community groups the opportunity to provide further feedback on the plans. Although the face to face events due to take place in March had to be cancelled due to Covid-19 restrictions, the online consultation was extended to a three-month period (30 March to 30 June 2020) and received 1294 responses. The results have now been compiled into a report, which will be used to inform a final masterplan.



What you said

You can view a full copy of the consultation report on the Warwick District Council website. Overwhelmingly 98% of respondents stated that a Country Park should be created for the community. A summary of what the public and stakeholders considered to be the most important elements for the new public space are listed below;

- Encouragement of wildlife and biodiversity
- Accessibility for walking
- Provision for safe cycling
- Inclusion of natural play areas
- Provision of a community hub / café
- Development of community food growing areas
- Those who took part in the survey also voted in favour of naming the park **Tachbrook Country Park** rather than Tach Brook (associated with the neighbouring brook or stream).

Next steps

The final masterplan for Tachbrook Country Park will be considered by the Council's Executive in February. If approved, the plans will be put forward for planning permission for change of use of the land.

The park will be developed in two phases.

Phase 1

Will see the installation of tracks and trails, along with other necessary infrastructure, to allow the site to be opened up for public use. This phase will also include the construction of play areas, refreshment centre and toilet facility.

Phase 2

At this stage there will be further development of community facilities to enhance the park and a feasibility study for a possible extension to the south.

For further information and updates visit

www.warwickdc.gov.uk/tachbrook



Tachbrook Residents' Action on Climate Change - TRACC

By Martin Drew

We know Bishop's Tachbrook is one of the furthest away places from the sea that you can live in England. However what we do here impacts what happens in the world's oceans. Our oceans are filled with items that do not belong there. Huge amounts of consumer plastics, metals, rubber, paper, textiles, derelict fishing gear, vessels, and other lost or discarded items enter the marine environment every day, making marine debris one of the most widespread pollution problems facing the world's oceans and waterways.

Here are a few easy and effective ways you can choose to reduce your daily impact and make a world of difference:

Bring a bag. Remember to bring reusable bags when you go shopping.

Invest in a reusable water bottle. Acquiring a reusable water bottle would not only greatly reduce the amount of single-use plastic you use, but it would also save you money in the long run!

Bring your own reusable cup. Think about how many disposable cups are used every day in just your local coffee shop. Bringing a mug for your morning coffee can reduce the amount of waste you produce annually.

Refuse single-use items. Take note on how often you rely on single-use items and choose to replace them with more sustainable versions. Refusing plastic straws and disposable cutlery when you go out and bringing your own containers for leftovers are a few ways you can start today.

Shop in bulk. Consider the product-to-packaging ratio when purchasing items and choose larger containers instead of multiple smaller ones. When you have the option, also consider purchasing package-free foods and household goods.

Make sure your waste goes to the right place. Do your best to ensure that the waste you dispose of ends up where it should. Recycle the materials that are recyclable.

Compost. Composting at home reduces the volume of garbage sent to landfills and reduces the chance of some products becoming marine debris.



Growing tips

By greenfingers

February is often the coldest winter month although spring is just around the corner. More than any other month, what to do in February will depend on weather. It's a month where you can be frozen solid under snow at the start but almost pleasant by the end. The nights are drawing out and longer days mean we can start planting but only if the weather allows.

What to Sow in February

If the weather is good you can do some early sowing outdoors although best under cloche unless it is particularly mild. Broad beans and early peas to be ready for harvest in May and June can go in as can Jerusalem Artichokes. Shallots should, if possible, go out early but they really do benefit from protection, fleece or cloche until they have got going as will turnips and spinach.



Conventional advice is to sow parsnips now, but you will get much better germination rates in March or even as late as April when the soil is in better condition. They will still be ready by the time the next frosts arrive. Onions from seed can be started, probably more reliably indoors on a cool window sill, but be careful not to shock them when they are moved out into the greenhouse or coldframe. If you didn't plant your garlic cloves out in November then pop them in now. They like a cold spell so the frosts will not harm them.

Sowing Under Glass

Summer cabbage and cauliflowers should be started under glass, the coldframe should be sufficient. One seed tray with an insert to provide 15 modules is more than enough for this first sowing. You are only looking to get four or six plants off to a good start. Hardy lettuce can be started under glass as well to provide an early salad crop along with rocket and some radishes.

Don't just follow instructions to sow or plant outside in February off a seed packet, think of the conditions. Cold and wet ground will not germinate seeds, just rot them off. You can, however, get around this to some extent by using cloches for a week or so beforehand to warm and dry the soil.



Nature Page

By Steve Harvey

December merged into January, cold with frost holding the ground in its grip.

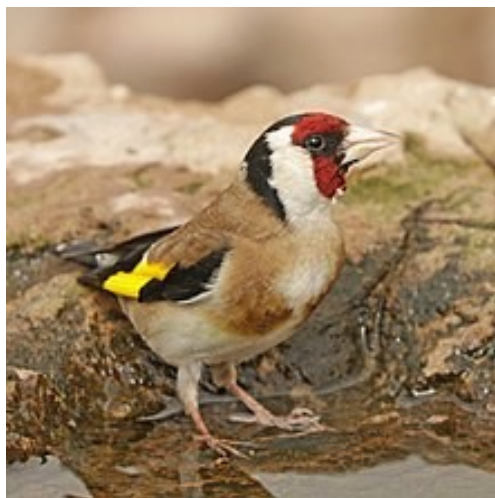
Last year's hot Spring and hotter Summer seemed a lifetime ago. Hellebores flowered as usual and tucked away in a sheltered corner of a garden, a very early daffodil bowed it's classic yellow head, poised to open at the end of December.

I wandered down the garden, early as usual, to meet the Jackdaws who were waiting in the trees for a quick and easy hand out of food to start their day. A dozen Gulls flew over, white against the grey sky. In the middle of them was a Jackdaw calling as it flew with them. Never seen that before - just as if it was escorting the Gulls off it's patch. They were leaving anyway

and paid no attention to it. The maverick Jackdaw left the gulls and flew back to join its mates.

Meanwhile, down on the lawn I'd been joined by a Robin and a female Blackbird. These creatures of habit had spotted another one - me! If you're hungry and there's a chance of food you learn fast. They are with me every morning now. I give them sunflower hearts as the Jackdaws don't seem to fancy them much. The female Blackbird has an injured wing. She flies but not strongly. It's nice to help her along with food. She's improving well.

With so many small birds coming to our feeders and table each day; at least ten species; the chance of spreading infection among them is high. There's no telling them about social distancing.



Goldfinches and some of the Tit family get a respiratory disease where the bird still feeds. It's feathers fluff up and it becomes very sluggish then dies within a few days. Then there's the virus that effects Chaffinches. The legs and feet turn white then swell up. The nick name for this is tassel foot. Not nice to see as the birds hobble around as they feed. So, during the last year I've been spraying the feeders and table with a mild disinfectant, leaving

it a few minutes then washing it off. I do this each day. Its a it of a faff but I'm hoping it helps.

So far this year amongst the bird table throng I've seen a couple of Siskin; lovely little green birds and a Brambling, looking like an attentive Chaffinch; only by a chance glance out of the window.

As I scribble its early January and we are in the fox breeding season. On many a night we've been woken by their calls. One fox, probably the dog fox trotted down the lane, calling as it approached. We heard it pass the cottage then off through the spinney.

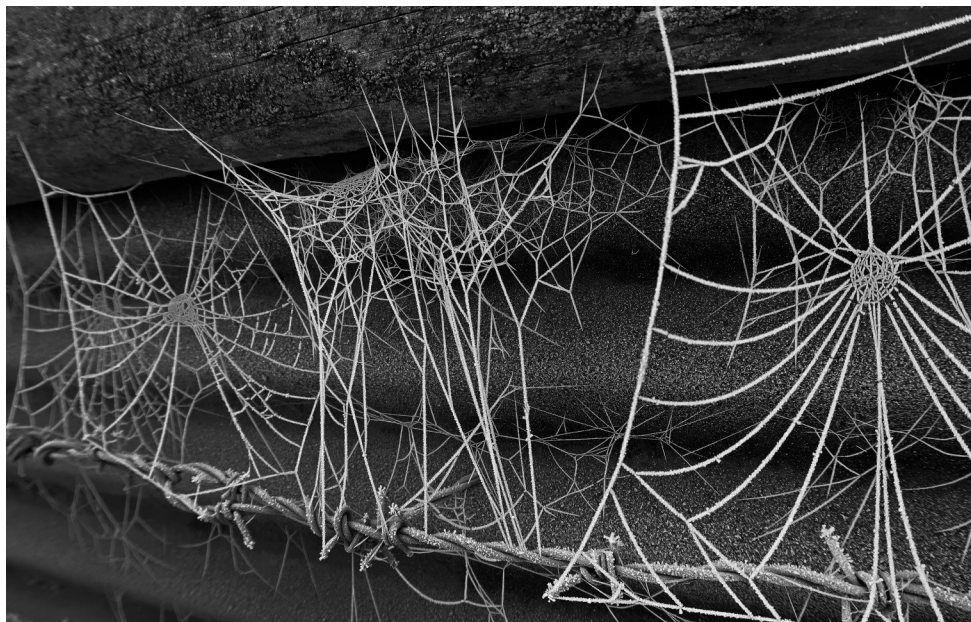
Another night one did a proper howl. I haven't heard them at the family planning stage yet. Now those passionate calls are extremely blood curdling. Just hope the Vixen earths up near us so we get to see the cubs again.

Well! Just as I thought 'd finished this scribble and about to hand it over when, early on 12 January I noticed a cluster of insects dancing in the porch light. About an hour later, as daylight crept in, a bat flittered between the cottages. All out of hibernation because of a mild spell. If the bat found the insects it would be very happy.



Winter in Lock Down

Pictures by Silvena Toncheva







News from Heathcote Primary School

Happy New Year from Heathcote Primary School. It has this year been a different start to the academic year to what we were expecting but as usual our families have been incredibly resilient and stepped up and embraced remote learning again. Our staff are supporting both children in school and at home with different activities which include recorded and live lessons. The children always have a smile for us and keep us on our toes.

We started this year all following the same text: Ssh! we have a plan by Chris Haughton. Every now and again the whole school follow the same book and this gives us an opportunity to really show progression of skills across the school, to promote discussion and develop learning across year groups. Ssh! Is a picture book and it really gave children an opportunity to think of new text for the story, work on their design and technology skills and understand about different birds. The children at home and school produced some wonderful learning and we are looking forward to seeing a display of exciting writing in school.



Now our new build is finished we are starting to think about our grounds in the school.



We have had lots of new trees planted and bulbs which hopefully will start to grow soon. Our vision is that every teacher is trained to be a forest school leader and a strong advocate for outdoor learning. We are starting to think about what our allotment area will look like and plan sports facilities which can be accessed by the community around us. The children love being out and about in the grounds. Our forest school area is developing and there are seating areas, digging areas, huge mounds for the children to climb, roll, imagine they are defending them from Roman invaders, a fire pit and fairy gardens. We have just purchased a shelter for those wet and windy days but sadly our grounds were broken into over the

Christmas holidays and the shelter and forest school area was vandalised. But it doesn't stop us we move on and up and The Friends of Heathcote School are focussed on building a permanent shelter in that area for the children and looking at ways to fundraise.

We all know that home schooling our children whilst still working from home ourselves isn't easy. We have some top tips for you to try if it helps. Make a timetable and plan a daily routine. Children love routine and knowing when things are happening. Plan short sessions so you can all



have a break. Most children can really only concentrate on one task for 10-15 minutes. Set a timer, sit with your child and read through the activity together and then support them when they need it. Lots of praise makes everyone feel better. When you have a break move away from where you are home-schooling and do something which makes your child laugh or calms them. Find time to just sit and listen to what is around you and practice deep breathing. Most of all don't worry if you don't complete all of the tasks set. Even a little bit of reading and counting every day keeps the brain active.

Keep safe everyone and well. Please visit our website to see our curriculum and things the children get up to. www.heathcoteprimaryschool.co.uk.
Mrs Humphriss – Executive Head Teacher.



What a lot seems to have happened with WI over Christmas. Instead of our annual Christmas party we had a "swinging" zoom meeting with excellent entertainment provided by James Webster. Once we'd muted everybody to stop the rustling of crisp packets and wine being poured, all was good and we were able to enjoy well known Christmas songs and carols.

As January was to be Elaine's last meeting with us we decided to hold an extra meeting to say goodbye but by the time everything was arranged her plans had changed. We carried on as planned. During the meeting, she received a knock on the front door and found on the doorstep a small token of thanks for all she has done for the WI. We will miss you very much Elaine. This meeting continued with zoom bingo and a quiz provided by another of our members. This as always causes great hilarity and as we weren't muted is also exceptionally noisy.

I have joined various county zoom evenings. I've learnt about fine jewellery or should I say how gemstones such as rubies and opals, are mined. Did you know there was an underground opal mining village in Australia. I watched a demonstration on festive flowers, attended Warwickshire's AGM meeting and a Presidents evening, enjoyed Paulius

the Cabaret Geek and laughed at the federation Panto. The federation is trying to let us enjoy what would normally be on offer in the form of actual meetings. We also have monthly competitions, Sam had a placing with her door wreath.

Our "knitting group and friends" worked hard last year providing over 400 angels for the school children to find, ear protectors for the NHS, and items for the post box top. This resulted in a radio interview for Zoe the coordinator. Keep an eye on the post box, you never know what you might see.

Book club has been reading avidly, not meeting for the last few months due to it being too cold to sit in a field but zoomed in January for an interesting discussion and chat about our last book. We hope to repeat it next month. I'm sure the wine group is still practicing I know I am. Mine was heated with spices the other evening. Lovely

We still do lots with the WI. We are very lucky our federation has kept going, some have closed down for the foreseeable future. If you would like to join us one month give me a call. You only need to load zoom onto your laptop, phone or tablet and you're over half way there. If I can do it anyone can.

Next month Helen Tudge is going to talk to us about Pilates, encouraging us with some easy exercises. She normally runs classes in the village but has carried on via zoom. It gets very cosy in our sitting room on a Wednesday morning with both of us taking part.

Do think about joining us. It's really nice to see different faces. Bishop's Tachbrook is in the minority with not having recruited new members during lockdown so here's an appeal to you all; why not have a think about joining us, at the moment you don't have to go out in the cold or walk home afterwards, just sit on your sofa and have a laugh. Please give me a call and I will help if I can.

Anne Allen 424135



The Railway Stations of Leamington Spa

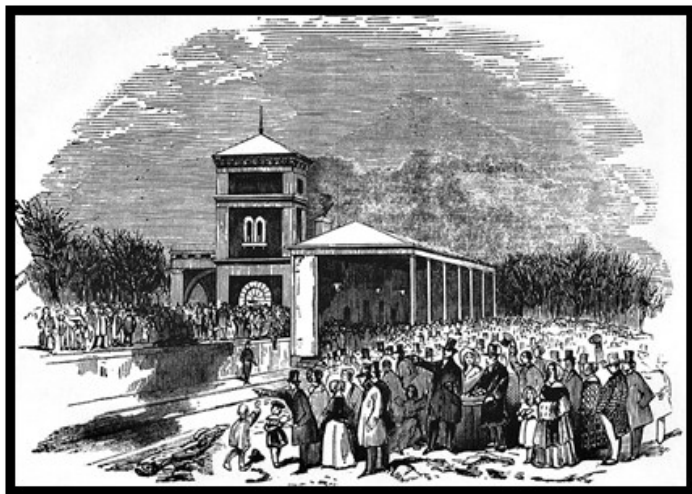
By Peter Lister

Part 1 - Milverton

The age of the railways first came to Leamington Spa and to Warwick in 1844. Since that time, the development of the rail network serving Leamington Spa led to the creation of three railway stations. Perhaps, though, it ought to be four stations as one was completely replaced by a new station a few hundred yards away.

The London & Birmingham Railway Company (L&BR) had, by 1838, established a line from London to Birmingham, via Rugby and Coventry. In 1844 the company then put a branch line from Coventry to serve the two towns of Leamington Spa and Warwick, but to only provide one station to serve them - midway between the two towns. This single line ended at Milverton, just to the north of the Rugby Road. The station was initially called **Leamington**. Whilst making economic sense for the company, it caused irritation to the worthies of the two towns, for each had hoped for a station on their own doorstep. The ambiguity of its position between the two towns was reflected during its

lifetime by a further seven changes of name, the last change in 1952 being **Leamington Spa (Milverton) for Warwick** (quite a mouthful!).



This early print shows the opening of the single line and station, witnessed by an excited crowd. The classical style station buildings are shown together with the canopy that covered both the platform and the line. The style of the station was built to impress and reflect the status of the fashionable Leamington Spa and the historic county town of Warwick with its ancient castle. Shortly afterwards the L&BR was absorbed into the London & North Western Railway (LNWR) and this company decided to run a branch line from Rugby, skirting around the south side of Leamington Spa and linking to the Milverton Station. This

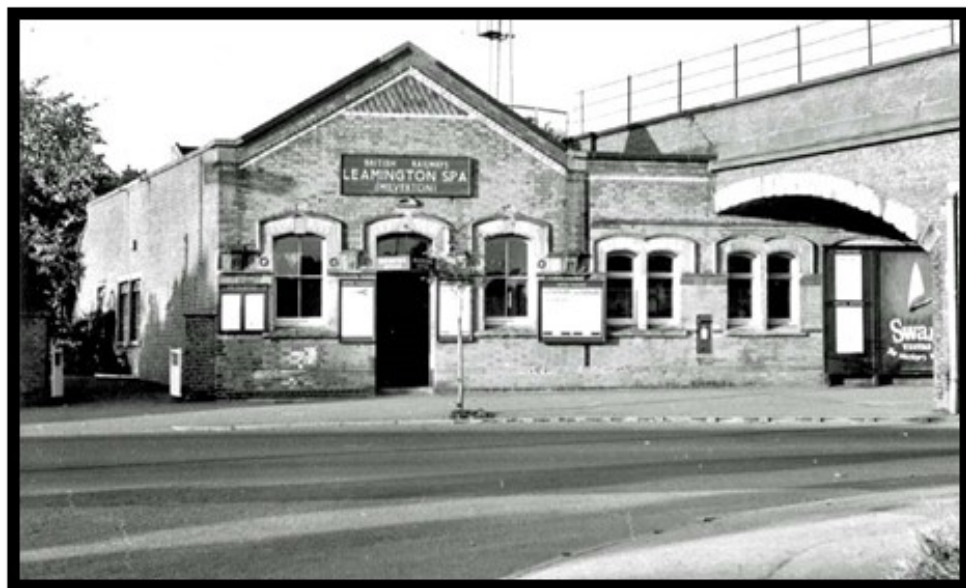
was achieved in 1851. Eventually, the single track was doubled. In 1884 the company replaced the original station with a new (and considerably less impressive) brick building a little further to the south with its booking hall at street level on Warwick New Road, nestling under the railway bridge. One of the arches provided a connecting subway between its two platforms.

This station hit the headlines when sympathisers of the Irish Republican Army (IRA) planted a bomb in its

cloakroom on the 1st July 1939. Fortunately no one was injured in the subsequent explosion, nor was the line affected.

What the IRA failed to do in 1939, Dr Beaching succeeded in doing in 1965 when the station was finally closed to passenger traffic as part of his major review of the country's railway network. Nothing now remains of either of the two stations at Milverton.

Peter Lister



Poetry please

Mirror in February—Thomas Kinsella

The day dawns, with scent of must
and rain,
Of opened soil, dark trees, dry
bedroom air.
Under the fading lamp, half
dressed -- my brain
Idling on some compulsive fantasy
I towel my shaven jaw and stop,
and stare,
Riveted by a dark exhausted eye,
A dry downturning mouth.

It seems again that it is time to
learn,
In this untiring, crumbling place of
growth
To which, for the time being, I
return.
Now plainly in the mirror of my soul
I read that I have looked my last
on youth
And little more; for they are not
made whole
That reach the age of Christ.

Below my window the wakening
trees,
Hacked clean for better bearing,
stand defaced
Suffering their brute necessities;
And how should the flesh not
quail, that span for span
Is mutilated more? In slow distaste
I fold my towel with what grace I
can,
Not young, and not renewable,
but man.

Poetry please

January 1939—Dylan Thomas

Because the pleasure-bird whistles
after the hot wires,
Shall the blind horse sing sweeter?
Convenient bird and beast lie
lodged to suffer
The supper and knives of a mood.
In the sniffed and poured snow on
the tip of the tongue of the year
That clouts the spittle like bubbles
with broken rooms,
An enamoured man alone by the
twigs of his eyes, two fires,
Camped in the drug-white shower of
nerves and food,
Savours the lick of the times through
a deadly wood of hair
In a wind that plucked a goose,
Nor ever, as the wild tongue breaks
its tombs,
Rounds to look at the red, wagged
root.
Because there stands, one story out
of the bum city,
That frozen wife whose juices drift like
a fixed sea
Secretly in statuary,
Shall I, struck on the hot and rocking
street,
Not spin to stare at an old year
Toppling and burning in the muddle
of towers and galleries
Like the mauled pictures of boys?
The salt person and blasted place
I furnish with the meat of a fable.
If the dead starve, their stomachs
turn to tumble
An upright man in the antipodes
Or spray-based and rock-chested
sea:
Over the past table I repeat this
present grace.



List of advertisers

Events

Bishop's Tachbrook Sports and Social Club

Food and drink

Lizzy Pickles

Financial Services

FMS Warwick Ltd

Funeral Services

C Pullin and Sons

Garden Services

Murley Garden Machinery

Tom Rodgers Tree Services

Health & Beauty

Lynn Hemmings, Chiropodist

Revival Holistic Treatments

Home Improvements

Complete Flooring

Diamond Interiors

Drop Dead Gorgeous Curtains

Trades

Andy Veal Plumbing & Heating

A Sparkes Electrical Services

Simon Systems

Miscellaneous

CSL Driving School

Eternal Flowers

Iron Lady

Locke & England Auction Sales & Valuations

Squab storage

Wag About Town dog walking

Bishops Tachbrook Sports & Social Club Entertainments

In view of the Government guidelines constantly being updated any changes to the current situation will be advertised

On Social Media

On Our Website

On The Notice Board at the End of the Drive

Membership Renewal

Hello & happy new year to you all hope you are all well and keeping safe!

We'd just like to give all our members an update regarding memberships that are due to be paid & updated by the end of this month (January 2021).

Due to the club being closed for over six months, working at a reduced capacity when we could open in 2020 and now this continuing into 2021, potentially for some months to come, the following has been decided by BTSSC team.

Anyone who was a paid member on 31st December 2020 and is due to have their membership expire at the end of this month (January 2021) will not need to pay for the coming year and your membership will now not need to be renewed until January 2022.

Anyone who didn't renew back in January 2020 (lapsed members) or anyone who wishes to become a new member once we reopen, will need to pay membership fees.

We will update you as much as we can on upcoming information as soon as we can give you it.

All we can say is stay safe and hope to see you soon.

Many thanks for your patience.

BTSSC team.

Wash Hands Cover Face Make Space

Contact Us



www.bishopstachbrookclub.co.uk



01926 421621/07855709051



enquiries@bishopstachbrookclub.co.uk



bishopstachbrookclub



 FOLLOW US ON facebook

 **TOM RODGERS**
Tree Services

All aspects of tree and hedge work

Stump Grinding

Local authority approved

Free Estimates
Competitive Prices

Member of Arboricultural Association

Tree Dismantling

24 hour call out

Professional and Friendly Tree Care Service
www.tomrogers.co.uk Tel. 01926 810716 or 07958794180

FOR ALL YOUR GARDEN MACHINERY NEEDS



For further details contact us at
01926 494336 | www.murley.co.uk
Nelson Lane Warwick CV34 5JB



MURLEY
GARDEN
MACHINERY



Lizzy Pickles Catering

Your Local Caterer

For All Occasions

Business Lunches

Parties

Weddings

Christenings

Funerals

Buffets

Training Sessions

**Home of the Lizzy Pickles
Sausage Roll**

Most Items Homemade

**Menus Tailored To Suit
Your Needs**

**Lunches and Buffets from
£3.95/head**

Established over 10 years

To Discuss Your Catering Requirements call:

Lizzy Pickles

Tel: 01926 422438

Mob: 07917 036757

**email: lizzy.pickles@tiscali.co.uk
Kingsley Rd, Bishops Tachbrook**

Home Improvements

Complete FLOORING

Carpets Vinyls Wood

*** Supplied and fitted

*** Sample swatches

*** Free quotes

*** Re-stretches/adaptions

(Will fit customers own Materials)

Call Dylan 07866 638674 / 01926 315116

Email: dylan126@btinternet.com



Kitchens&Bathrooms



Quality Kitchens, Bathrooms, Bedrooms and Home Studies.

◆
Family Run Business, Established 1985.

◆
Made to Measure Replacement Doors

◆
Fully Fitted or Supply Only

◆
Our Own Employed Fitters



◆ Diamond Interiors ◆

◆ 01926 332288 ◆ www.diamondinteriors.net ◆

◆ 27 Hurlbutt Road, Heathcote Ind. Estate, Warwick CV34 6TD ◆

Drop Dead Gorgeous Curtains.

Beautiful Bespoke Curtains, Cushions and Roman Blinds
all made to measure.

Curtain alterations and restorations also undertaken.

All items are handmade by myself, a fully qualified soft furnisher.

From fabrics to poles, all your needs are catered for.

I'm also happy to work with customers own fabric.

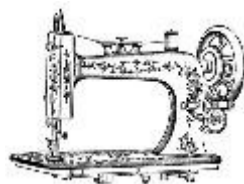
Free measuring service, no obligation quotes and free curtain fitting and dressing.

Call Sharron for friendly and helpful advice, or to make an appointment on
07760395805 or 01926 718220

Email; dropdeadgorgeouscurtains@gmail.com

Website; www.dropdeadgorgeouscurtains.com

Find me on Facebook and Instagram.





Do you run a business and are any of the following a burden?

- * Company accounts *
 - * VAT *
 - * Taxation *
 - * Payroll Services *
 - * Company Secretarial Work *
- Or do you need new systems and procedures?

**If the answer is yes,
then contact us.**

FMS (Warwick) Ltd
114 Kingsley Road,
Bishops Tachbrook
Tel: 01926 314286 (Evenings)
or 07802 735491
michael.jaggard@btinternet.com
(Sage & Inland Revenue Agents)

Why not try our classic car

C PULLIN AND SON

Monumental Masons

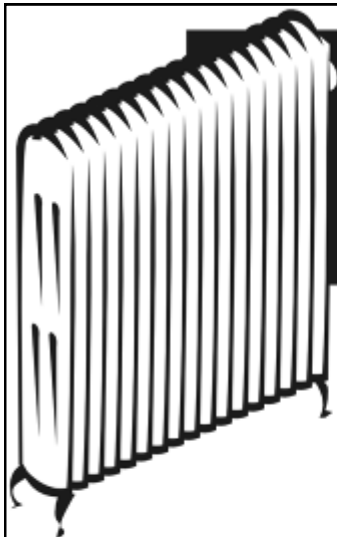
Five generations
of Quality Manufacturing
and Service

All Aspects of
Monumental Masonry



Showroom at: 19A High Street
Leamington Spa CV31 3AW

Trades



ANDY VEALL

PLUMBING & HEATING



213264

TEL: 01926 315387

Gas Fitting • Central Heating
Plumbing • Bathrooms • Showers
Landlord's Gas Safety
Installation • Servicing • Repairs • Power Flushing

A. Sparkes Electrical Services

Serving Southam, Princethorpe,
Ryton on Dunsmore & all surrounding villages

Domestic electricians registered with STROMA and working to the latest 18th edition wiring and part P building regulations offering a full range of services from a simple fitting change, landlord, Periodic Inspection reports, consumer unit upgrades through to partial or full rewires. Notifiable work undertaken

No Job is too big or too small, Free estimates, competitive pricing and a friendly & reliable service

Call Adrian on 07950 679998 or

E: sparkeselectrical@gmail.com www.asparkeselectrical.co.uk

Unit 3 White House Farm, Oxford Road, Princethorpe, CV23 9QD



A. S. E. S.



STROMA
CERTIFICATION
CERTIFIED INSTALLER



Simons Systems



Available for all your computer requirements including:
PC's & Laptops, New & used systems, Repairs & upgrades
Virus/Malware Removal, Data back & Windows re-installation
Upgrading memory/Hard drives/Rom drives/Graphics, etc
Internet - modems fitted, wireless, networking.

Any repairs or computer problems. **No call out charge**

T: 01926 316 119

E: sales@simons-systems.co.uk

M: 07751 811 097

W: www.simons-systems.co.uk



Eternal Flowers

YOUR LOCAL QUALIFIED FLORIST
CREATIONS FOR ALL OCCASIONS

Lindsey Robinson

Tel: 07521 455 879

Email: lindsey@eternal-flowers.com

www.eternal-flowers.com



**Tired of Ironing,
Clothes Piling Up?
Then call in "The Iron Lady"
on 0780 859 4810**

I can offer either a Regular or One Off/Backlog service

Happy to collect/deliver

Cathy.ss10@live.co.uk



Auction Sales & Valuations

Valuation, collection and auction service of individual items through to complete property and commercial clearances.

Call for a free no obligation quote or email
info@leauction.co.uk

SALE ENTRIES NOW INVITED

Antique & Modern Furniture • Clocks • Books • Ceramics & Glassware • Pictures & Prints • Bicycles
Jewellery & Watches • Collectables • Garage Tools & Equipment • Household Electrical Items • Office
Furniture & Equipment • Retail Products & Stock • Vehicles • Horticultural & Commercial Equipment
Building Materials • Garden Furniture & Effects

www.leauction.co.uk

	 LOCKE & ENGLAND AUCTIONEERS & VALUERS 01926 889100		18 Guy Street, Leamington Spa, CV32 4RT
--	--	---	--

Moving Home?

Need some extra space?

Safe, secure storage for domestic and commercial uses

**NO
MINIMUM
PERIOD**

**Flexible
storage option**

**Discounted
moving services**

Van rental

**Flexible
opening hours**

**Packing
materials ***

**Daily storage
rates**

*Free delivery to local area

SQUAB
GROUP

Harbury Lane, Leamington Spa CV33 9QB
t: 01926 882282 www.squab.co.uk





Wag About Town Pet Services

I provide a friendly, professional and reliable dog walking and pet care service in the South Leamington area. I can walk your dog, feed your cat and look after your small furry animals, all carried out in your home.

Please contact me if you would like to chat about your requirements.

Tracey - 07598 240703

wagabouttownpetservices.com
wagabouttown.petservices@gmail.com



£30 per lesson

www.csldrivingschool.co.uk

01926 831713

07594810822

p.hancock_adi@hotmail.co.uk

Local independent driving school run

by Peter Hancock



REVIVAL

Holistic Treatments by Kerry

Acre Close, Whitnash. Leamington Spa.
01926 427352 / 07890 444870

Body Massage from £21.00 - £30.50 (30, 45 or 60 mins)

Hopi Ear Candles £23.00 (Special rates for under 16s)



Indian Head Massage £28.00

Reflexology £28.00 (Special rates for under 16s)

Special combined treatment offers*

Back Massage & Hopi Ear Candles £35.00 (Usually £44.00)

Back Massage & Reflexology £36.50 (Usually £49.00)



Gift Vouchers available

Free parking

Call for our latest offers and further information on any of the above treatments

* Combined treatment offer only applicable when taken together during a single appointment



VISITING
QUALIFIED
CHIROPODIST

Mrs Lynn Hemmings
MSSCH, MBCHA

01564 784466





CONTACTS

For editorial issues contact Keith on: BTparishmagazine@hotmail.com

Copy deadline for the March 2021 issue is 22nd February

For **adverts** please contact Pam on: btachbrookmagad@live.co.uk

To put **dates in the diary** please contact Marion on: marismi913@aol.com

For **distribution issues** contact Kate on: kate.wellsted@btconnect.com