

# PARISH MAGAZINE

Issue 4. May 2023 [www.bishopstachbrook.com](http://www.bishopstachbrook.com)

Your magazine featuring news and views from Bishop's Tachbrook Parish.





A Service of Commemoration on  
the Coronation weekend of  
King Charles III



St Chad's Church  
Sunday 7<sup>th</sup> May  
10am

# What's in this month's magazine

In the run up to King Charles III's Coronation ceremony there's obviously a fair amount of comment in this magazine. Perhaps the most unusual is the official Spotify playlist chosen to enliven your celebration—see page 23. Perhaps the nicest is the WI's post box top featured on the front cover, love the carriage!



There's a very extensive report from the Parish Council that looks back through last year and forwards from the formation of the new council after the local elections. If you want to keep up with the issues impacting the parish and what's being done about them this is essential reading. See pages 6 to 9.

There's a comprehensive report from TRACC. If you're interested in our environment and wish to fight for our collective futures please read it and, more importantly, start taking some action. See pages 10 to 13.

There's a fascinating History Group report on the Discovery and Restoration of Chesham's Yard. If you've never heard of it, like me, and you're interested in our local history tuck into it. See pages 14 to 17.

Of course there's much more of interest and entertainment. A good start would be to flick to the next page and digest Revd. Jonathan's reflections.

Enjoy your read.



# A message from the vicar

Rev. Jonathan Smith



‘Spring is surging up in the life of the ground under the warmth of the sun - the moisture of melting frosts is hopefully behind us. Although beware as the old saying goes – ‘*Ne’er cast a clout till May is out*’.

How have you sensed the warmth and fragrance of spring blowing around us? Do you think like me this one has felt a particularly long and cold winter? But have you stopped to ponder the warmth of the Creators hands stirring up the latent life?

The garden knows it as well and the ‘jobs for the weekend’ are truly building a pace. Mowing the lawn for the third time this week shows life is springing all around us. Frogspawn has hatched in the DIY jam-jar aquariums on the kitchen sill, and the seeds planted a few days back in the greenhouse have showed the first few shoots. In a moment between enjoying this all-embracing spring joy and stealing a few mindful moments whispering to the seedlings (in the manner of the new King), I pondered deeply and was captivated afresh by the miracle of that which produces life. I thanked God (not Charles) for the hope that creation brings as it keeps renewing despite the desperate environmental damage.

Just like in nature, so in the church, Springtime is a gift of God. No one can stop the coming of spring when God has appointed its time. And no one can bring forth the life of spring unless God sends it. Christians believe all life is possible because it is breathed into by God. Beginning with Genesis, dust was breathed into life, and this

is a theme that continues throughout Scripture.

***“For I will pour water on the thirsty land, and streams on the dry ground; I will pour my Spirit upon your offspring, and my blessing on your descendants. They shall spring up among the grass like willows by flowing streams.” (Isaiah 44:3–4)***

Everything about the faith of the church individually and corporately is about life. We want to be bearers of life; we want to see health restored in our earthly relationships as we worship God and believe in his son Jesus to heal and restore us. We want to see growth in the faith of our community from the young to the old and everyone in between. To see the benefit of believing God’s hope above the challenges and current struggles of everyday life.

Spring is a great time to remember where life sprung from. As the breath of God (Ruach) once hovered over the formless empty earth, now the risen, ascended Jesus sent His Holy Spirit to bring life. As St John wrote, ***“it is the Spirit who gives life”***.

This is why we’ll give God our praise in church this spring! Special prayers of hope will appear on our ‘Spring Hope Wall’ and prayers of thanks will flutter on the church fence. Signs of hope will be seen this Spring because God has *already come* to us - His springtime power came at Easter. Taking strength in our lives for his *Spring presence* can we marvel again at his *abundance*.

Join us as St Chad’s this May to celebrate all the joys of Spring and a special service commemorating the King’s coronation on Sunday 7<sup>th</sup> May 10am.  
Blessings to you.



# Parish Council News

By Matt Greene

They say a cold and unsettled April means a warm summer will follow - I don't know who "they" are but I hope they're right. In May we celebrate King Charles III's coronation - the Parish Council wishes both the King and Queen well. May is also a month in which many of our young people take important exams; good luck to all students; we hope their hard work pays off!

For the Parish Council, this May is also a busy month with local elections and a new Parish Council. The Parish Council election is uncontested; eight residents came forward for nine vacancies. We welcome two new councillors; Paul Gillman and Peter Guest - congratulations to you both on your election - and we say goodbye and a huge thank you to Cathy Herbert and Ray Bullen; both will be greatly missed.

Ray has decided to retire after providing many years of invaluable advice on planning matters; no one can doubt Ray's passion and commitment for standing up for what he believes in and we wish him a very happy retirement. Ray's parting message to the Parish was a caution that, whilst we all have many things we believe are important, in his view the most important is that we look after our environment and take climate change seriously.

After eight years with the Bishop's Tachbrook, Cathy has decided to join Whitnash Town Council. Cathy has assisted with health and safety matters, the Meadow car park and liaising with the various community groups. Our loss is Whitnash's gain, we wish her luck in her new role and know that she will bring the same energy and balance to Whitnash.

For the avoidance of doubt, through their uncontested re-election, your continuing councillors are Craig Brewster, Leigh Carter, Sean Deely, Martin Drew, Matthew Greene and Keith Wellsted. One vacancy remains and councillors intend to co-opt an eligible person to fill this space.

Our Annual Parish Assembly took place in April, copies of the statements from councillors will be available online shortly. Chief Inspector Faz Chishti, PC Kayleigh Macdonald and PCSO Jack Power attended the Assembly. The Chief Inspector updated the meeting on the new policing model which is now in operation and is aimed at visible community policing. The Safer Neighbourhood Team led by

Inspector Simon Ryan, oversees all safer neighbourhood policing teams in Warwick District. He is supported by Sargent Bev Wallington who is responsible for the safer neighbourhood teams in Warwick and Kenilworth. The Warwick Rural West Team, which covers 12 parishes including all of Bishop's Tachbrook, is covered by PC Ben Brewster and PCSO Jack Power. We are hoping that support will be provided to community speedwatch and officers will be available at community events. Posters have been placed on the notice-boards and we will be putting contact details on the website. If you are experiencing difficulties with contacting the Police, have issues or you wish them to attend an event please do copy the clerk in your correspondence. As always first contact should be via 999 if an emergency or 101.

Thank you to residents for providing information on the construction lorries which were driving through the village. Discussions have taken place with the District Council, the County Council, the Police and the site manager and we are hoping this has now been resolved. The site manager tells us that he is monitoring the situation regarding mud on the road. They are currently employing a road sweeper twice a day for an hour to clean the road. If they need more road sweepers they have assured us they will employ them. The wheel washing facility on site is being moved closer to the road which should remove most of the excess mud.

Cllr. Leigh Carter is arranging regular meetings with the County Council project manager to try and keep updated on any changes to the construction management plan. We understand there are no current plans to limit the flow of traffic along Oakley Wood Road; we are staying in touch with the relevant officers on this matter. We will try to keep you updated via the magazine or social media.

We have just been invited to a meeting on plans for the Harbury Lane safer cycleway/footpath to the new school. The County Council received funding from the Government and we are delighted that they have invited us to participate in this project. We will keep you updated as we know this is very important to residents on the settlements around Harbury Lane.

The District Council has assigned an officer to work with us on a safe path to Oakley Wood. This is a difficult project as there is insufficient public land for a path and a busy road to cross. We are exploring several options.

The Seven Acre Close play area is being designed. The Parish Council, with the help of residents, has indicated that we would like the suggested surfacing upgraded. We are working with a District Council officer and hope this can be

installed in the summer.

A representative (or two) from Severn Trent will be attending our meeting on 25 May to discuss the planning application for the installation of the wider pipe in the parish. This pipe is needed to stop sewage overflowing onto our streets.

The road markings and signage, on the opposite side of Mallory Road to the village green, near the bend, will be painted. We are waiting for a date from the County Council.

The verges on Kingsley Road need attention; as well as asking parents, who drive their children to the village primary school, to please use the Oakley Meadows entrance we would ask all users of the road to both drive (and park) considerably. We are also keen to work with the County Council to try and find a solution to the problem.

County Council are aware of the fenced area on Mallory Road. They are investigating with a view to repairing.

The developer has fenced the area adjacent to the play area on Lionheart Avenue. We are regularly liaising with him to find out when this work will take place and the fence be removed.

The clerk has been informed of a number of dead trees on the new developments. Please do let her know of the locations and she will take the matter up with the developer or the District/County Council, if the developer has completed the development.

The street light which is out on the Meadow we believe is the responsibility of the Oakley Meadows Management Company and the clerk is liaising with them. She is also working to ensure they repair the damage caused by the drop kerb works on the corner of Doughty Drive.

The District Council has given the Parish Council permission to move one of the bins on St. Chad's Green to a different location on the green. It makes no sense having two bins next to one another. The new location will be close to the new



bench which is being installed.

Please tell the clerk if you experience any issues with the play equipment. The equipment is inspected weekly. We have recently arranged for the swings to be oiled and we are looking at whether the seat in the jeep can be repaired. The two gates have finally been repaired by the company who installed the equipment - hurrah!

The Oakley Meadow allotment plots are nearly ready for renting. Please send the clerk an email if you are still interested in a plot. We are aware that there is a damaged light on the Sports and Social Club driveway. Hoping that this can be repaired shortly.

Thanks to the Brownies for carrying out their annual litter pick. It's really appreciated.

The Parish Council has decided to ask the District Council to increase the number of councillors from 9 to 12 and to create 2 wards; north and south. This needs District Council approval and could take 12 months. If you live on the new developments please give some thought to joining the Parish Council in the future. Attend one of our meetings and decide whether supporting your community is something you want to do. Ask the clerk for information. We would love to hear from you.

REMEMBER when you vote on Thursday, 4th May you must have a photo ID with you.

Our next meeting is on Thursday 25 May at 7.30pm at St. Chad's Centre. All residents are welcome to attend.

Tachbrook Residents' Action on Climate Change was set up to reduce the Parish's carbon footprint by raising awareness and engaging residents to prevent the catastrophic effects of global warming. The last year has seen a number of TRACC initiatives to combat climate change become a reality.

### Carbon Capture

The main activities have been planting new and maintaining existing trees together with rewilding green spaces around the Parish. With advice from expert arborist, Martin Hicks, a detailed survey was carried out to evaluate the Parish's tree inventory with regard to safety and ensuring healthy future growth. A specialist contractor is carrying out the work detailed in the schedule such as removing dead trees, pollarding to restrict height growth and cutting overhanging boughs that could endanger traffic or pedestrians.

Trees through photosynthesis provide one of the most effective ways to capture carbon dioxide and release oxygen. Martin advised on the selection of new, native species trees that are appropriate for their locations around the Parish. The BT Working Party carried out the first planting with nine fruit trees on land behind the storage building next to the allotments. It is the first public orchard in BT. In addition; two oak saplings were planted on St Chad's Green. It is hoped that further tree planting will take place in the early autumn on green spaces and in the new Country Park. **As it requires a lot of spade- work, preparing the ground and planting the trees, more people will be needed to help the Working Party team.**

Amy Bambridge from Heart of England Forest (HEF) has offered to help organise Parish consultation events to recruit and train volunteers in readiness for this winter's planting schedule and to advise on future care of the trees. In addition Amy has offered to recommend funding sources and support with applications for financing the BT tree programme

### Transformation of Oakley Wood

Warwick District Council in association with Warwickshire Wild Life Trust and Friends of Oakley Wood are responsible for the ongoing restoration of the wood to

its former glory as mixed deciduous native woodland. Considerable areas have been thinned to enable light to help the new saplings grow and the coming years will see the removal of the ubiquitous conifers. New paths enable residents to appreciate this wonderful natural amenity on our doorstep. And most important, all the new trees will sequester more carbon than ever before.

### **Rewilding our green spaces**

Following the schedule provided by Lucy Hawkes from Warwickshire Wild Life Trust, care and maintenance of the re-wilded perimeter of the Meadow continues into the second year with close mowing and clearing the cuttings. This is necessary to facilitate new growth and enable the wild flowers to flourish. A number of other green spaces in the Parish are scheduled for rewilding to develop bio diversity and encourage pollination insects.

### **Repair Café and Energy Hub**

Repair, recycle, reuse is the mantra we must put into practice to stop depleting the planet's resources. A campaign was launched on social media to raise awareness about setting up a BT Repair Café but has had little success. A new initiative is planned to encourage residents to help organise and run a BT Repair Café. With solar power soon to be installed, the storage shed will be the ideal venue for



a repair and recycle hub (similar to Action 21 and Barford's BAR Zero Repair shop).

## **Help Save Energy**

TRACC posted an energy saving guide on the BT website to help residents save money and reduce our carbon footprint. As well as repairs, the BT repair cafe could become an energy saving advice hub providing advice on everything from home insulation to installing renewables, growing your own food to zero carbon transport.

## **Climate Action Groups**

TRACC is member of the Warwickshire Climate Alliance (WCA) and Low Carbon Network Warwickshire (LCNW). A number of topics have been raised by both groups throughout the year including:

- Lobbying WDC to divest fossil fuel company shares from their pension portfolio (which is now happening). WDC should invest in renewable energy companies
- Closer liaison with local climate action groups such as Kenilworth Altogether greener, Friends on the Earth, Green Peace & Extinction Rebellion to share information and action strategies.

WCA is developing a **Big Green Road Show** funded by a WDC grant. Starting in July 2023 the road show will visit parishes in Warwickshire. It aims to raise public awareness about the challenges of climate change and collaborate with other local groups to develop a serious plan for transition to net zero greenhouse gas emissions as quickly as possible

WCA 's and LCNW's critique of WCC's Sustainable Futures Strategy: a major weakness is its failure to aim for net zero by 2050, despite this being a UK Government priority. The Council's strategy, if pursued, would achieve only a 40% reduction on emissions across the county, and would rely on offsetting for the remaining reduction. Reliance on this is unrealistic. Much of the strategy also relies on plans and options yet to be undertaken and require detailed action plans for investment in renewables and retro fitting most of the UK's poorly insulated housing. The strategy should also include a commitment to lobby government with regard to changing national policy and massively increase funding, without which the county's net zero ambition will fail.

However the Council's community powered approach is commendable and should be central for achieving net zero carbon by 2050 i.e. forums comprising expert members of local groups should be responsible for tackling the 6 recommended areas:

TRACC attended a number of webinars and live discussion meetings organised by Warwick University Climate group, Coventry green new deal and WCC.

## **Events Diary**

### **4/05/2023 Warwickshire Climate Action: Climate Hustings**

How will the parties contending Warwick District, Warwick District Town & Parish Council face up to climate change?

Climate Hustings: 4th May, 7.30 -9pm on zoom? Entry is free via ticket available on Eventbrite

### **10 -18/06/2023 Climate Coalition: National Great Big Green Week**

See link for details <https://greatbiggreenweek.com>

### **October TBA Great Big Green Week Leamington Spa & Warwick**

See link for details <https://greatbiggreenweek.com/>

**TRACC INVITES RESIDENTS TO HELP BT ACHIEVE ZERO CARBON STATUS AS SOON AS WE CAN AND PLAY OUR PART IN COMBATING GLOBAL WARMING**

**Contact Martin Drew**

**[martin@bishopstachbrook.com](mailto:martin@bishopstachbrook.com)**



# History Group

By Ian Morley

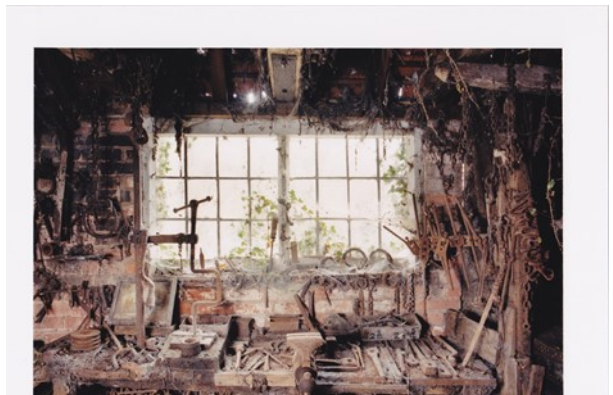
## The Discovery and Restoration of Chedham's Yard

The History Group Meeting of 11 April began at 2.30 in St. Chad's Centre with a short AGM. After the meeting Dr. Krys Pietrecki, the Secretary of the History Group, gave a talk on 'The Discovery and Restoration of Chedham's Yard' (in Wellesbourne). The Yard combines the trades of Wheelwright and Blacksmith: a combination that is rare but not unique. The business was started by Thomas Chedham in 1823 and the Yard was run by his family until 2002 when it was sold to Wellesbourne Parish Council for £10,000.



The purchase price was cheap but there were many hidden costs. Eventually it was decided to run the Yard as a self-supporting entity supported by a charitable trust (involving extra costs in the order of £800,000). To raise funds the trust entered a competition in which BBC viewers voted village was to receive funding from English

Heritage. The programme was entitled 'Restoration Village' and Chedham's Yard were the winners. Apparently, an interview between Griff Rhys-Jones and an elderly lady who lived in Wellesbourne made a huge impact, and gave the Parish Council the right to apply for £1 million from English Heritage. In 2007 the BBC planned a series of follow-up programmes to show what progress had been made. Unfortunately the River Dene flooded the Yard and the BBC





never returned. Krys assured us that the flood defences are now much improved. Eventually, the Trust received the full amount of funding 'but only by jumping through a lot of hoops'. The money allowed them to carry out archeological surveys; identify and catalogue more than 4000 artefacts; renovate the forge and the wheelwrights workplace; build a new visitor's centre; and liaise with neighbours in the Village (so rare these days).

The Yard reopened in June 2012 with some serious restrictions: for example, it was only allowed to open for 26 days in each calendar year, with a maximum of 30 people on site at any one time. The forge could open on only 6 of those days, and visitors were forced to pre-book a slot before they arrived.

By the end of 2014 all financial support had been used up. There are now no paid staff, and the Trust relies almost entirely on donations from visitors. Groups of up to 30 people may arrange visits during the week, and the History Group will take advantage of this facility in June of this year. The Trust made a decision to allow free entry on Saturdays, but to encourage donations, and fortunately visitors have

been very generous. According to the Chedham's Yard brochure (supplied by Krys):

There are weekly demonstrations by the blacksmiths and wood turners showing the processes that were once common in the Yard. The tradesmen are keen to discuss their crafts and how they relate to past activities.

This has been my own experience when I visited the yard some time before lockdown. The woodturners produced the most beautiful pieces for sale within the Visitor Centre from all kinds of scrap wood.

Some new items have been added to the collection for 2023, including two handcarts. The most recent newsletter from Chedham's Yard reminds us that:

*Elm, Ash and Oak had to be stored and seasoned for twelve to fifteen years before it was ready for use. They made their own nails and mixed their own paint.*

*Farm carts were all made by hand, painted with three coats, and ready to put to the horse and costing £13 10s and the money to be paid in sovereigns.*

I'm sure that all of us will remember the ceramic poppies representing the 'blood swept lands', displayed at the Tower of London in 2014, to commemorate the centenary of World War One. The Trust have bought 11 of the ceramic poppies and incorporated them into a display reminding us of the sacrifices made by 11 families from Wellesbourne.

Krys describes the Yard as a place 'to look, learn, and take part' or 'to sit and chat and ask questions'. What better commendation could there be? If you haven't been there it is well worth a visit. If you have been there it is well worth another visit. The Address is Church Walk, Wellesbourne, CV35 9QT.

Thank you Krys for an entertaining and informative talk.





# Nature Page

By Steve Harvey

As I scribble this in early April the Dawn Chorus is hitting its stride. Just as the very first hint of light is suggested to the sky so it begins. If the Robin doesn't start it then the Blackbird will. They're soon joined by the Song thrush, Wood pigeon, Wren and Chaffinch, and away they blast. Each one staking their claim on nest sites and food supplies. By the time it's fully light the singing is over and they're off to feed or nest build, or feed their young. Then, later in the day more singing. Free as a bird they say. I don't think so!

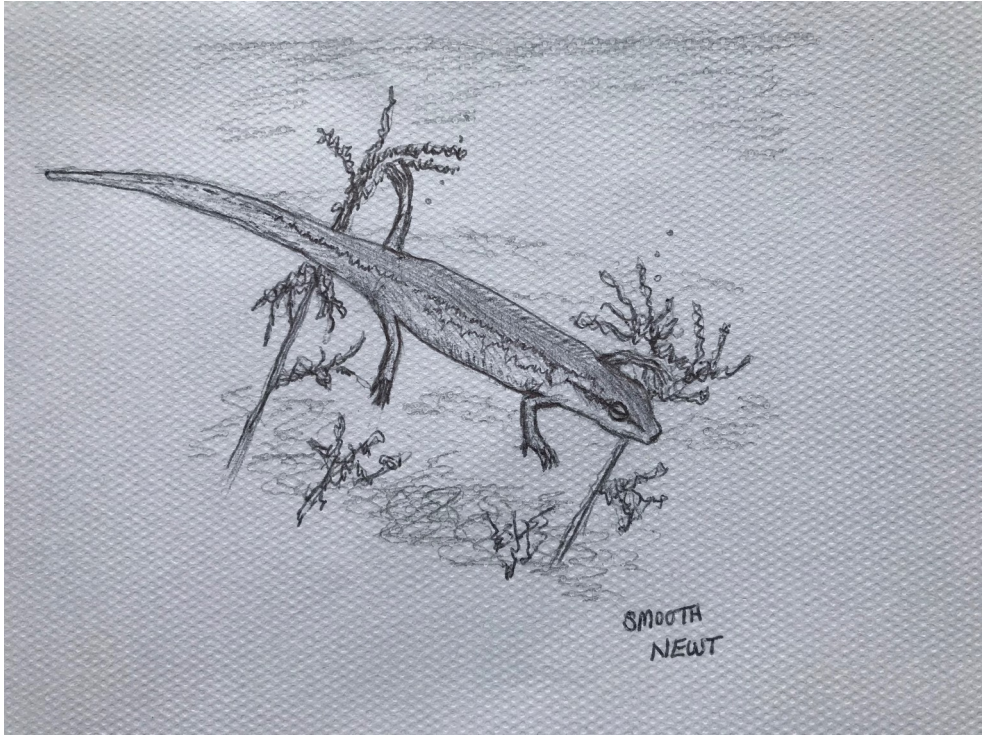
Now in early April the Jackdaws begin to change their mood, all down to increased light and hormones. They become much more active and hungry. When I'm around the garden a few of them will come close to me to get my attention. They know I'm a soft touch (though I prefer caring). I usually get them some food. They now build themselves up for the mammoth task of family rearing.

In front of the cottage runs a spinney. It's the place one of the Tawny Owls spends the day. It's just called out in daylight as I'm scribbling, possibly a female nesting, calling to the male for a little light refreshment. It was from this spinney that a loud echo sounded. A loud one note whistle with a hint of rainforest about it. I had to creep closer to see what it was. I moved slowly from tree to tree getting nearer the sound. Chris Packham would have been impressed. Ahead of me, near the top of some Yew trees were a noisy group of about eight Jays gathered together as if in some meeting or dispute. Some made the usual Jay squeak whilst others did an almost eerie whistle. How could I have reached this age and never have heard that call?

Meanwhile, down on the ground, ants, beetles, slugs and snails are back in business but in the pond the Frogs aren't. Just like last year they all dispersed. Only one thing for it, to go and have a look at night with a torch. There before me were two beautiful smooth Newts, one of them reversing into the pond weed laying eggs; exquisite little things but Tadpole chompers. It's said that if you have Newts then you may not have Frog tadpoles. Well I think that proves the point then. We



do get a lot of adult Frogs later in the year from next door's larger pond so I'm more than happy to have the Newts.



So glad to have regular Hedgehogs at the moment. After releasing over fifty we rarely see one so to have a possible pair arrive each night for a table for two is lovely.

Now do you ever wake up in the morning with a feeling in your waters that you are going to see your first Swallow? No! Just me then!

So there I was in Wasperton, blue skies and a slight breeze from the South - perfect. Within an hour I saw . . . . a Swallow? No, two House Martins. Well that will do for me. The first Swallow flew over the cottages two days later. So trust that feeling in your water. However if symptoms continue see a doctor.

# WI

By Anne Allen

Our last month's speaker, Vicky from the House of Colour, felt at home in the school having been a pupil there herself together with her younger sister Beth. Yes you've guessed it right. She was once Vicky Worrall and is now Vicky Pool. Vicky explained how what colours you wear affects how you feel and look. She talked about the benefits of having a capsule wardrobe which not only saves you money but ensures you always look your best. When doing a colour consultation you would be draped in scarves of various shades. The colour wheel is divided into warm and cool colours and also the four seasons i.e. you may have at least 4 shades of red , all slightly different allowing them to fall into each season. We were also told a bit of makeup or lippy makes all the difference. It was a fascinating talk and left some of us worrying what if we've got it totally wrong and need a new wardrobe.

The Supper Club is proving very popular. 16 of us invaded the Racehorse in Warwick. It was an excellent but plentiful meal. I don't think I have heard so many " Oh my's " as the food was brought out. A lot of us were seen leaving with doggie bags. Our next venue is to Piccolino's in Warwick. Husbands provide the transport and enjoy their own meal.





We have the opportunity to enjoy various events organised by the Warwickshire Federation, these include An Evening with the Women's Land Army, a trip to the Houses of Parliament, a Cotswold Mosaic Workshop, Kayak and Canoe Taster sessions, a Treasure Hunt, An Evening with Sunny Ormonde, our Grand Day Out in Cambridge plus an Afternoon with TV Historian and author Tracy Borman. There is also a plant sale and other stalls event planned on May 13th at Federation House in Warwick. As you can see there is plenty for everyone to enjoy.

Here we are looking forward to our May meeting when not only will be discussing this year's resolution but welcoming Church Farm Brewery. Plus celebrating the Coronation. Definitely going to be a busy night.

The resolution is Clean Rivers for People and Wildlife. This is something you can't really argue against but I'm sure we'll have a lively debate. If you have any insider information on this topic please either come along to the meeting or let me know.

We are getting ready for our annual cake stall. Please note this is on May 20th this year due to somebody organising his coronation without consulting us. If you like to bake, we would love a cake, I only ask you list the ingredients please. There will be a small book stall too.

I'm sure most of you will have seen the post box topper created by the WI Knitting Group. Everyone did something. A big well done to them. We meet usually on the second Tuesday of each month in the Leopard at 7:00pm Everyone is welcome, just turn up with your work. We can help you get started in knitting or crochet or even making tassels come to that.

I'm still collecting used/old bras for recycling at Bravissimo. It's amazing how heavy a black bin bag is when full. Also postage stamps.

I found out recently that Warwick Lions recycle spectacles when they are at the Saturday market. Not in cases though. You just drop them off at the stall.

Have you ever thought about giving the WI a try?? Why don't you come along to one of our meetings where you will find a group of mixed aged ladies who know how to laugh and have fun. Give me a ring if you want to know a bit more about what goes on.

Anne Allen

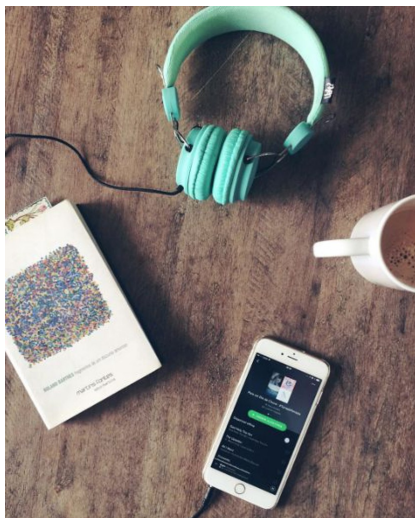
424135 or 07929356701 or pussycatgalore12@yahoo.co.uk



## King Charles's Coronation playlist

The Department for Culture, Media and Sport selected 27 songs on behalf of the monarch as "inspiration" for street parties and celebrations. Here's the full Coronation playlist:

- "Come Together" by The Beatles
- "Daddy Cool" by Boney M.
- "A Sky Full of Stars" by Coldplay
- "Let's Dance" by David Bowie
- "Celestial" by Ed Sheeran
- "One Day Like This" by Elbow
- "Mr. Blue Sky" by Electric Light Orchestra
- "Starry Eyed" by Ellie Goulding
- "Starlight" by Emeli Sandé
- "Dance All Over Me" by George Ezra
- "Slave To The Rhythm" by Grace Jones
- "Treat People With Kindness" by Harry Styles
- "Running Up That Hill (A Deal with God)" by Kate Bush
- "Our House" by Madness
- "It's A Beautiful Day" by Micheal Bubl 
- "All over the World" by Pet Shop Boys
- "We are the Champions" by Queen
- "People Get Ready" by Jeff Beck, Rod Stewart
- "SPACE MAN" by Sam Ryder
- "Gold" by Spandau Ballet
- "Say You'll Be There" by Spice Girls
- "Shine" by Take That
- "Waterloo Sunset" by The Kinks
- "I'm Gonna Be (500 Miles)" by The Proclaimers
- "Love Reign O'er Me" by The Who
- "Green Green Grass Of Home" by Tom Jones
- "King" by Years & Years



[Coronation Celebration Playlist - playlist by DCMS | Spotify](#)



## St Chad's Centre Schedule

Monday	Activity	Contact
10-11.30am	<p><b>St Chad's' Tinies</b></p> <p>We are a friendly playgroup for children aged 0-4 years and their carers.</p> <p>Hot drinks and snacks, toys, craft activities and singing.</p> <p>All welcome.</p>	Contact on Facebook
17.00-19.00	<p><b>Martial Arts</b> Class. Over 12 years and adults</p>	<p>Andy Shaw – <a href="mailto:andy@linkcube.co.uk">andy@linkcube.co.uk</a></p>
19.30-20.30	<p><b>Kettle Bell Class</b></p> <p>The classes provide a friendly &amp; encouraging high intensity interval training session.</p> <p>50 minutes exercise and 10 minutes recovery &amp; stretching.</p> <p>It's a great way to improve one's general fitness.</p> <p>Classes run by Tony Foster a qualified KB Instructor</p> <p>Cost £6 per session</p> <p>Please bring KB (some are kept in stock please ask) exercise mat, towel and water.</p>	<p>Contact Bridget</p> <p>07795226047</p>

Tuesday	Activity	Contact
9.15-12.30	<p><b>ADVENTURE BABIES</b></p> <p>Take your little ones on a Sensory Story-telling Adventure every Tuesday at St Chad's Centre, as we bring brilliant books to life with puppets, props, bubbles and sensory activities.</p> <p>Mini Adventurers (0-18 months) 9.15am - 10.00am</p> <p>Diddy Adventurers (0-12 months) 10.30am - 11.15am</p> <p>Mini Adventurers (0-18 months) 11.45am - 12.30am</p> <p>Booking essential please visit <a href="http://www.adventurebabies.co.uk/warwickshireandcoventry">www.adventurebabies.co.uk/warwickshireandcoventry</a> to secure your place or contact <a href="mailto:lindsey@adventurebabies.co.uk">lindsey@adventurebabies.co.uk</a></p>	<p><a href="mailto:lindsey@adventurebabies.co.uk">lindsey@adventurebabies.co.uk</a></p> <p>or visit:</p> <p><a href="http://www.adventurebabies.co.uk/warwickshireandcoventry">www.adventurebabies.co.uk/warwickshireandcoventry</a></p>
14.30 –16.00 Tuesday 9th May	<p><b>HISTORY GROUP</b></p>	<p>John Fletcher on 01926 426001 or <a href="mailto:johnfletcher@sky.com">johnfletcher@sky.com</a></p>

16.45-18.30	<p><b>ATOMIC DANCE</b></p> <p><b>Acrobatic Arts 1</b></p> <p>4.45pm-5.30pm - Ages 5+</p> <p>Learn the foundations of dance technique and acro movement. In this beginner class, students will develop skills such as forwards and backward rolls, cartwheels and bridges in a fun, friendly environment.</p> <p>£18 per month.</p> <p><b>Acrobatic Arts 2</b></p> <p>5.30pm-6.30pm - Ages 7+</p> <p>A more challenging acro class for children who have previous acro or dance experience. Learn how to safely execute skills such as handstands, backbends and walkovers alongside improving dance technique.</p>	<p>Contact Ellie Rowe 07392 348155 or <a href="mailto:ellie@atomicdance.co.uk">ellie@atomicdance.co.uk</a></p>
19.00-20.00	<p><b>YOGA</b></p> <p>Supporting Health &amp; Wellbeing</p> <p>Yoga classes with Amanda</p> <p>Specialising in yoga for beginners. Sedentary workers, and mums.</p> <p>£5.00 per person</p> <p>Classes are limited to 11 people</p> <p>Please bring your own mat / block</p>	<p><a href="http://www.lifewithaman.com">www.lifewithaman.com</a></p>

Wednesday	Activity	Contact
9.15-12.30	<p><b>ADVENTURE BABIES</b></p> <p>Take your little ones on a Sensory Story-telling Adventure every Tuesday at St Chad's Centre, as we bring brilliant books to life with puppets, props, bubbles and sensory activities.</p> <p>Mini Adventurers (0-18 months) 9.15am - 10.00am</p> <p>Diddy Adventurers (0-12 months) 10.30am - 11.15am</p> <p>Mini Adventurers (0-18 months) 11.45am - 12.30am</p> <p>Booking essential please visit <a href="http://www.adventurebabies.co.uk/warwickshireandcoventry">www.adventurebabies.co.uk/warwickshireandcoventry</a> to secure your place or contact <a href="mailto:lindsey@adventurebabies.co.uk">lindsey@adventurebabies.co.uk</a></p>	<p><a href="mailto:lindsey@adventurebabies.co.uk">lindsey@adventurebabies.co.uk</a></p> <p>or visit:</p> <p><a href="http://www.adventurebabies.co.uk/warwickshireandcoventry">www.adventurebabies.co.uk/warwickshireandcoventry</a></p>
19.00-20.00	<p><b>YOGA</b></p> <p>Supporting Health &amp; Wellbeing</p> <p>Yoga classes with Amanda</p> <p>Specialising in yoga for beginners. Sedentary workers, and mums.</p> <p>£5.00 per person</p> <p>Classes are limited to 11 people</p> <p>Please bring your own mat / block</p>	<p><a href="http://www.lifewithaman.com">www.lifewithaman.com</a></p>

Thursday	Activity	Contact
10.15-11.45	<p><b>ST CHAD'S COMMUNITY CAFÉ</b></p> <p>Serving Drinks and Cake for you to enjoy</p> <p>If you would like to volunteer for one or two weeks per month please contact:</p> <p><a href="mailto:Chadstreasurer@outlook.com">Chadstreasurer@outlook.com</a></p>	<p>Kate Wellsted</p> <p><a href="mailto:Chadstreasurer@outlook.com">Chadstreasurer@outlook.com</a></p> <p>or ring 07713113464</p>
Friday	Activity	Contact
10.00-12.00	<p><b>Tai Chi</b> - All Classes are for beginners but are suitable for anyone. Classes have a maximum of 10 Students to ensure social distancing and are COVID Compliant. First class is free, so no reason not to find if Tai Chi is right for "you"</p>	<p>Peter Fletcher 07487 685679</p>
<p><b>Sundays</b></p> <p>18.15-20.00</p>	<p><b>St Chad's Youth Club</b></p>	<p><a href="http://www.stChad'sbt.org">www.stChad'sbt.org</a></p>
<p>Last Sunday of every month doors open at 15.15</p>	<p><b>Sound Meditation Classes</b></p> <p>80 Minutes of Bliss</p> <p>Healing for your mind-body-spirit</p>	<p>Louise</p> <p><a href="http://www.heathcoteholistics.co.uk">www.heathcoteholistics.co.uk</a></p> <p>01926 741255</p>



# Eternal Flowers

YOUR LOCAL QUALIFIED FLORIST  
CREATIONS FOR ALL OCCASIONS

Lindsey Robinson

Tel: 07521 455 879

Email: [lindsey@eternal-flowers.com](mailto:lindsey@eternal-flowers.com)

[www.eternal-flowers.com](http://www.eternal-flowers.com)



## Moving Home?

### Need some extra space?

Safe, secure storage for domestic and commercial uses

**NO  
MINIMUM  
PERIOD**

**Flexible  
storage option**

**Discounted  
moving services**

**Van rental**

**Flexible  
opening hours**

**Packing  
materials \***

**Daily storage  
rates**

\*Free delivery to local area

**SQUAB**  
GROUP

Harbury Lane, Leamington Spa CV33 9QB  
t: 01926 882282 [www.squab.co.uk](http://www.squab.co.uk)





# Simons Systems



Available for all your computer requirements including:  
PC's & Laptops, New & used systems, Repairs & upgrades  
Virus/Malware Removal, Data back & Windows re-installation  
Upgrading memory/Hard drives/Rom drives/Graphics, etc  
Internet - modems fitted, wireless, networking.

Any repairs or computer problems. **No call out charge**

T: 01926 316 119

E: [sales@simons-systems.co.uk](mailto:sales@simons-systems.co.uk)

M: 07751 811 097

W: [www.simons-systems.co.uk](http://www.simons-systems.co.uk)

## Auction Sales & Valuations

Valuation, collection and auction service of individual items through to complete property and commercial clearances.

Call for a free no obligation quote or email  
**[info@leauction.co.uk](mailto:info@leauction.co.uk)**

### SALE ENTRIES NOW INVITED

Antique & Modern Furniture • Clocks • Books • Ceramics & Glassware • Pictures & Prints • Bicycles  
Jewellery & Watches • Collectables • Garage Tools & Equipment • Household Electrical Items • Office  
Furniture & Equipment • Retail Products & Stock • Vehicles • Horticultural & Commercial Equipment  
Building Materials • Garden Furniture & Effects

[www.leauction.co.uk](http://www.leauction.co.uk)



**LOCKE & ENGLAND**  
AUCTIONEERS & VALUERS

**01926 889100**



18 Guy Street,  
Leamington  
Spa,  
CV32 4RT



## Wag About Town Pet Services

I provide a friendly, professional and reliable dog walking and pet care service in the South Leamington area. I can walk your dog, feed your cat and look after your small furry animals, all carried out in your home.

Please contact me if you would like to chat about your requirements.

Tracey - 07598 240703

wagabouttownpetservices.com  
wagabouttown.petservices@gmail.com



## C PULLIN AND SON

### Monumental Masons

Five generations  
of Quality Manufacturing  
and Service  
All Aspects of  
Monumental Masonry



Showroom at: 19A High Street  
Leamington Spa CV31 3AW


## VISITING QUALIFIED CHIROPODIST

Mrs Lynn Hemmings  
MSSCH, MBCHA

01564 784466

or

07444 424506.



This is a non-profit magazine supported by personal donations and contributions from St Chad's Parish Church Council and Bishop's Tachbrook Parish Council. All adverts are printed in good faith. The Bishop's Tachbrook Parish Magazine cannot take any responsibility for the contents of the advert or the services provided by the advertiser.

#### CONTACTS

For **editorial** issues contact Keith on: [BTparishmagazine@hotmail.com](mailto:BTparishmagazine@hotmail.com)

*Copy deadline for the June 2023 issue is 21st May*

For **advertising** contact : [btadverts@outlook.com](mailto:btadverts@outlook.com)